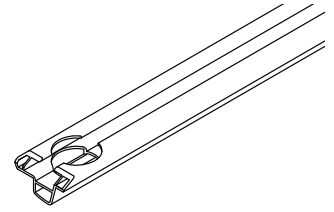




# ILOAD TRACK-MOUNT CROSSBAR FITMENT



**MAX 3 BAR EVENLY DISTRIBUTED LOAD: 100KG.**  
**IMPORTANT: THIS LOAD CAPACITY INCLUDES WEIGHT OF CROSSBARS (5KG EACH).**

**Important information:**

- Do not exceed the maximum roof load capacity of your vehicle (found in vehicle owners manual). If lower than roof rack system, always use the lower of the two figures. The mass of the roof rack and any bar accessories fitted, must be subtracted from the maximum carrying capacity to determine actual payload capacity. As a guide each cross bar weighs 5kgs. Example: Maximum Carrying capacity of 100kgs, Subtract 15kgs for a three bar system. Actual Payload is 85kgs.
  - Narrow and heavy loads are to be carried near the feet. - Loads which overhang shall conform to any relevant state laws.
  - Check tie down strap tension every 50kms as loads can shift and resettle
  - Do not use elastic straps to secure a load. Surfboards or similar large wind resistive loads should NOT be carried side by side but on top of each other. Each should be secured independently to the front and rear roof bar.
  - Specialised equipment carriers for specific products should always be used. I.e Ladder rack, bike and kayak carriers
- Note:** The handling characteristics of a vehicle will change when a carrier system is fitted. Driving techniques should be altered to allow for these changes, reducing speed, cornering and allowing longer braking distances.
- Roof bars can be removed when not in use.

**Parts list:**

Item	Part	Qty
1	Hyundai Track Pair - C140	1
2	Track Rivet - F022	17
3	End Cap right front rear left	2
4	End Cap left front rear right	2
5	24mm x 21mm channel nut	12

**Required Tools:**

1 - Power Drill.	4 - Butyl Mastic.	8 - 5mm Drill Bit.
2 - Drill Depth Guide.	5 - Marker.	9 - Pneumatic Rivet Gun.
3 - Cold Galvanising Paint.	7 - Vacuum.	

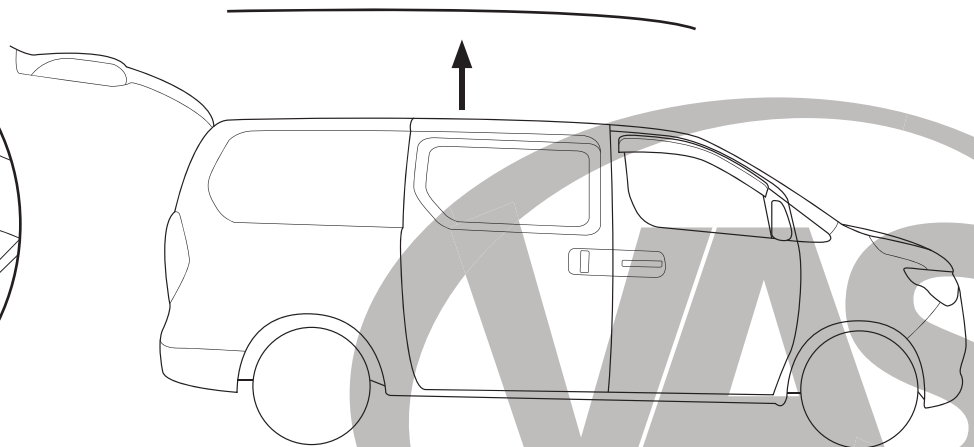
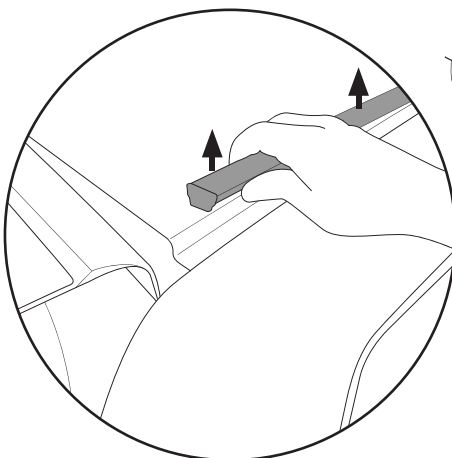
**Required kits (as separate):**

Crossbar x3  
1500mm

Crossbar Mount  
Kit x3

**Step 1**

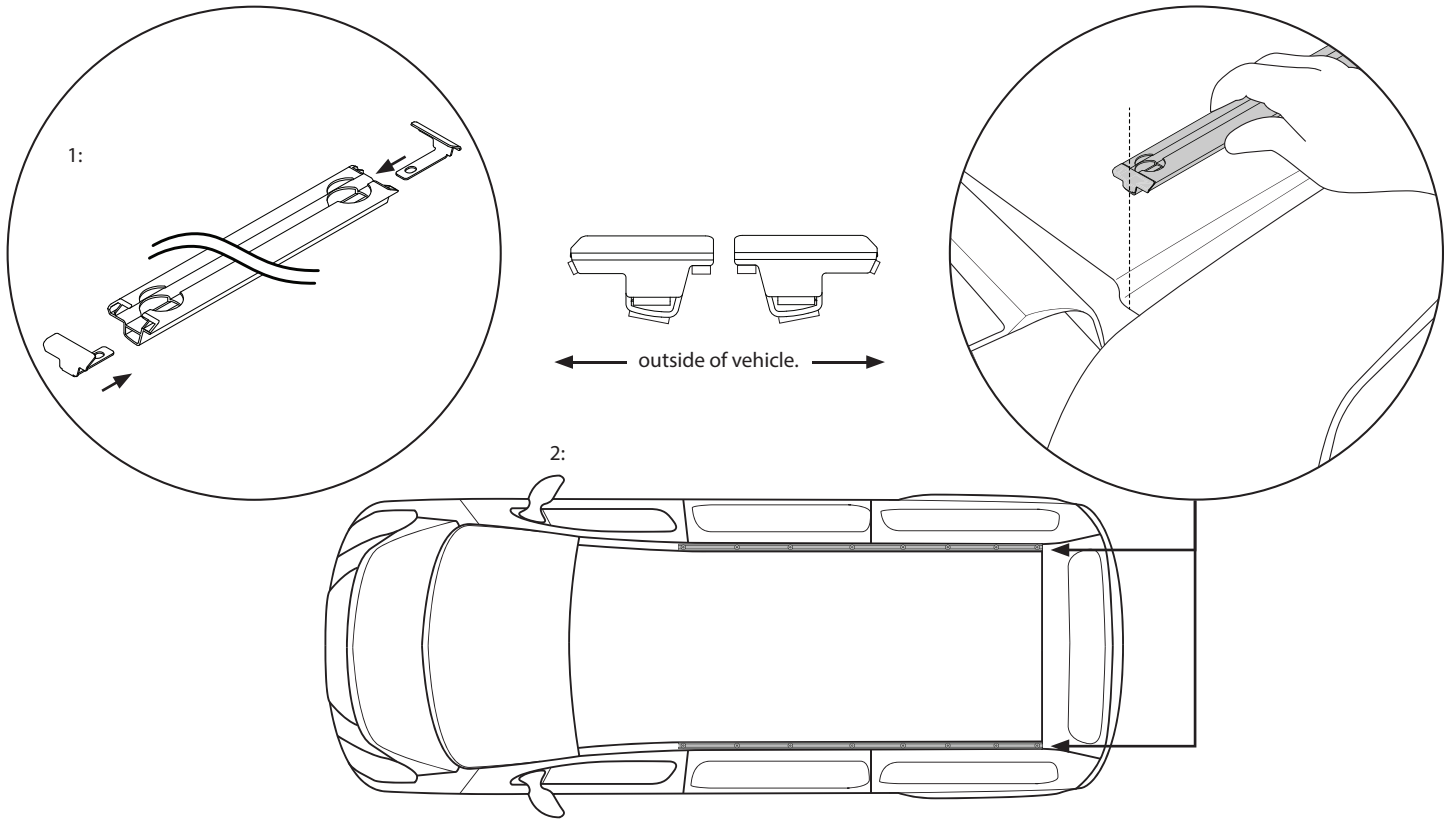
Open the rear door of the vehicle. Move to the roof and locate the ditch fill. Starting at the rear end of the fill, carefully remove the ditch fill.



# VAN RACKING MOUNT FITMENT

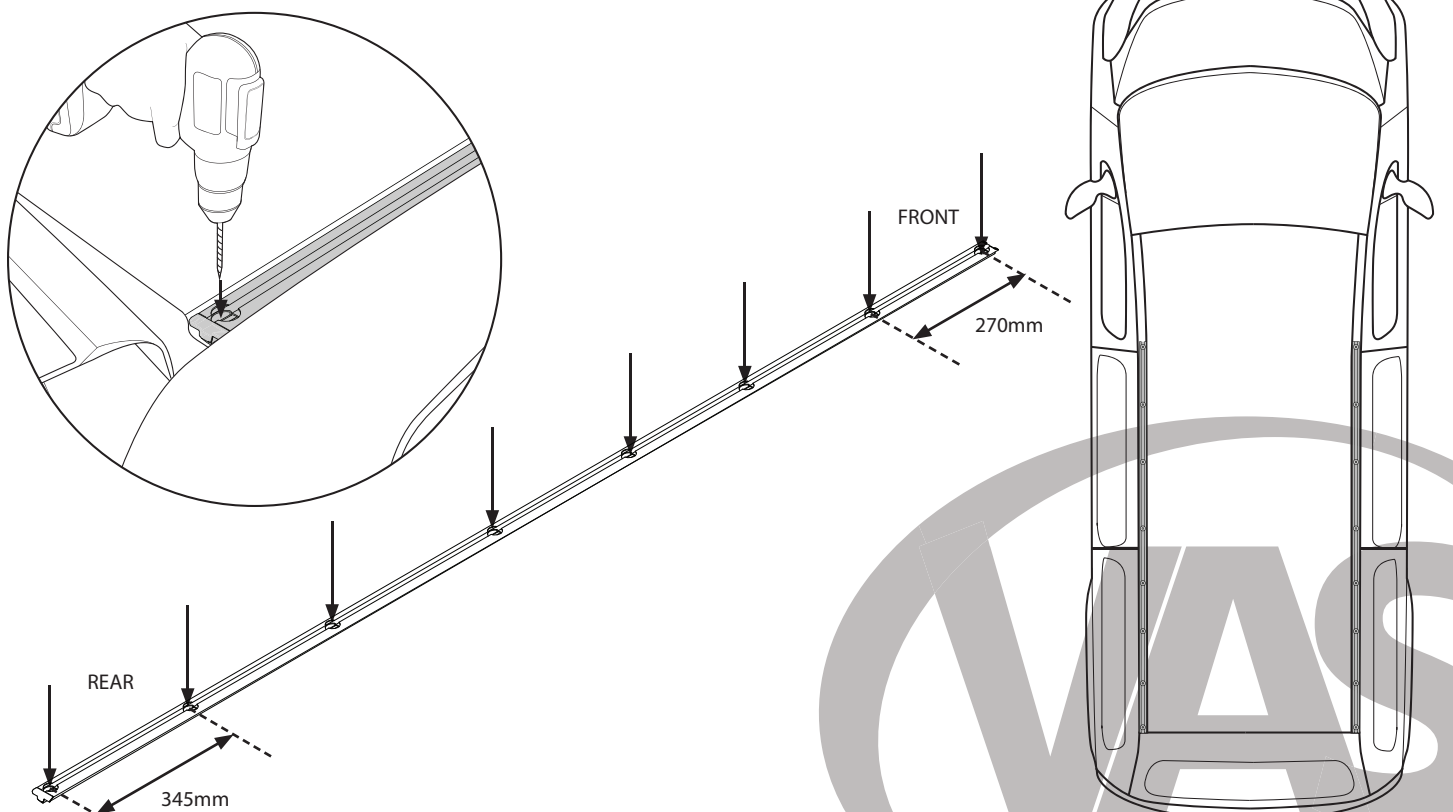
## Step 2

1 - Place the end caps into either end of the track. 2 - Put the tracks into the roof ditches (be aware of track orientation). The tracks line up flush with the end of the ditch at the vehicles rear.



## Step 3

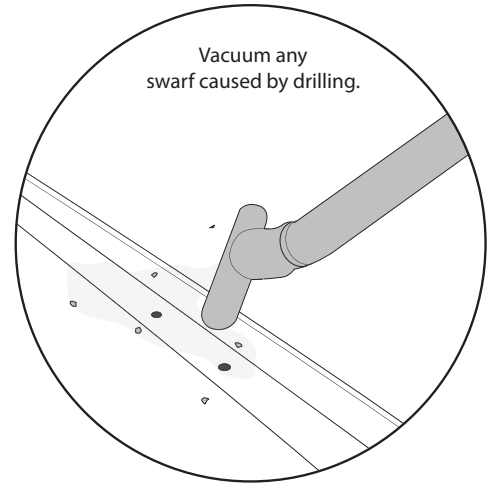
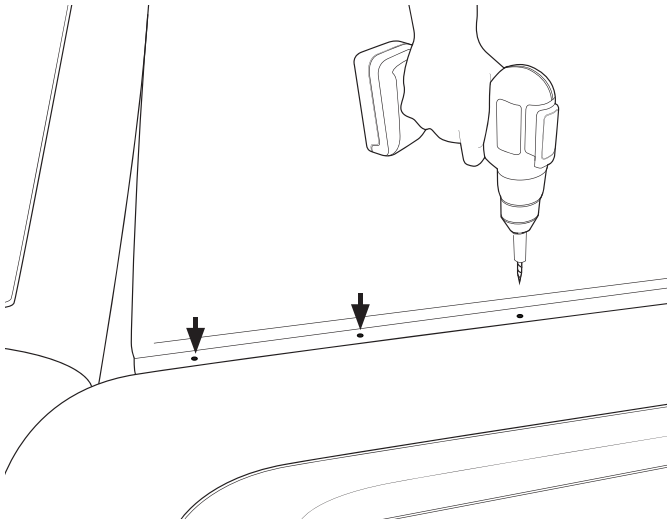
With the tracks in place, use a 5mm drill bit and create a spot mark through each rivet hole in the track onto the vehicle below. Remove the tracks when done. Do not drill through the roof at this stage.



# VAN RACKING MOUNT FITMENT

## Step 4

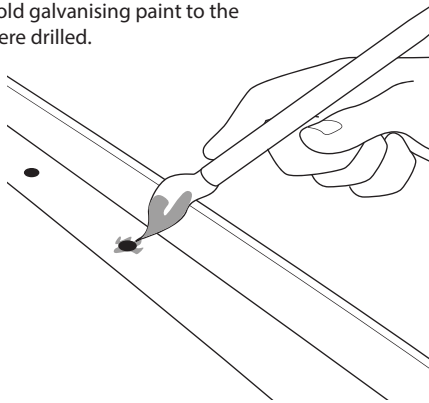
With a 5mm drill bit, now drill out all the points made in the roof in step 3. **A drill depth guide set to 5-8mm must be used to protect the interior of your vehicle.**



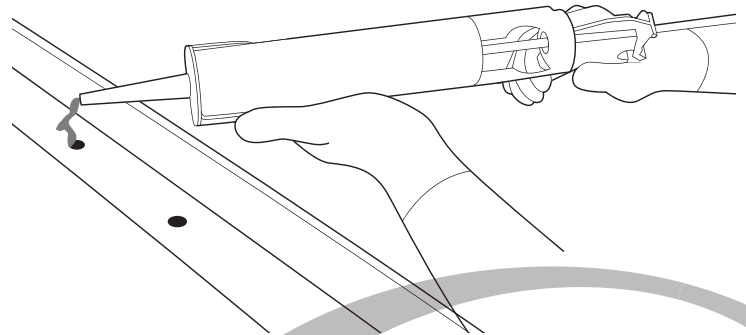
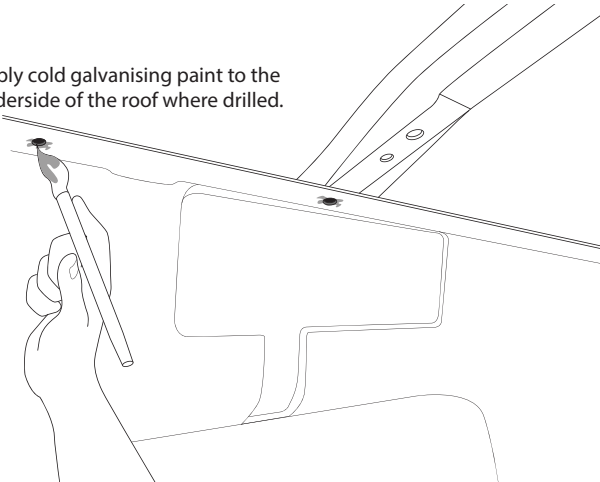
## Step 5

Apply cold galvanising paint to the holes drilled. Allow time to dry. Using butyl mastic, apply a water seal to the holes drilled.

Apply cold galvanising paint to the roof where drilled.



Apply cold galvanising paint to the underside of the roof where drilled.

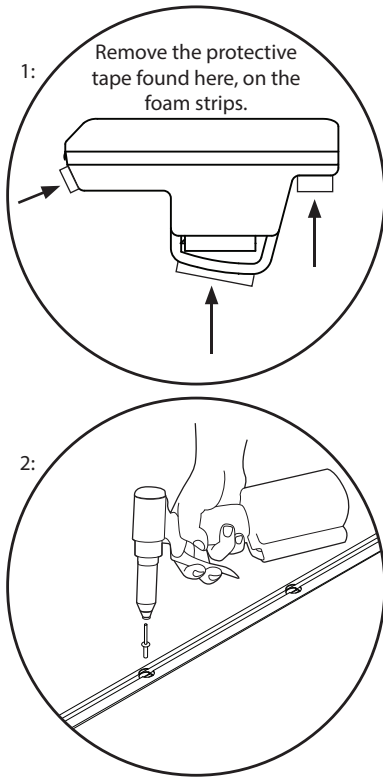


# VAN RACKING MOUNT FITMENT

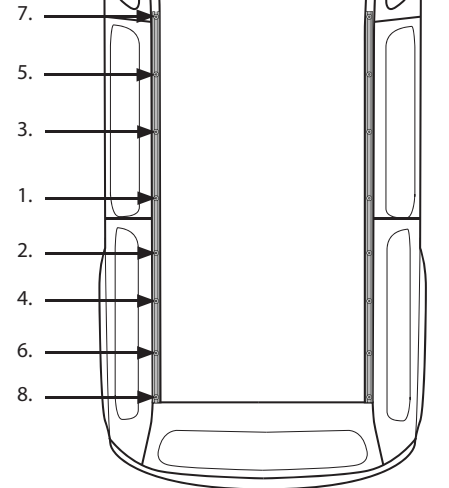
## Step 6

- 1: Remove the protective tape from the foam on the tracks.
- 2: Place the tracks back onto place on the roof. Using a pneumatic rivet gun with the rivets provided, fixed the tracks to the roof.

**NOTE:** If the holes don't align due to poor positioning, do not elongate holes in the roof. The structural rivet is designed to have a maximum holding strength in a 4.8-5.0mm hole.



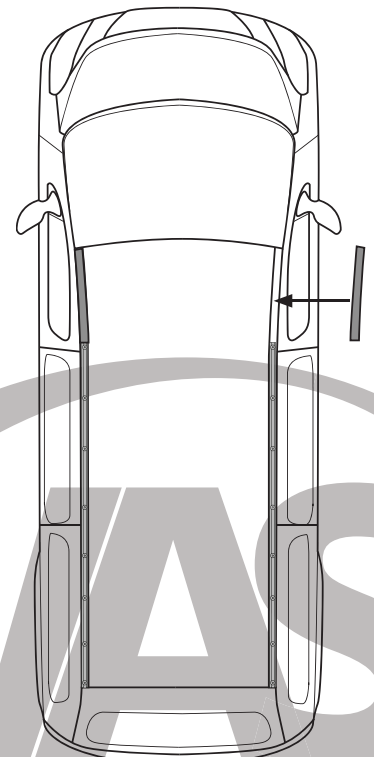
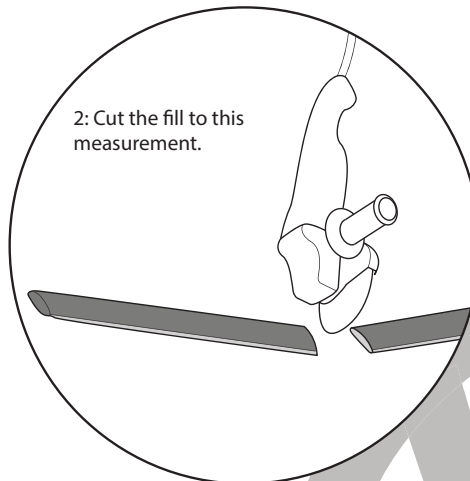
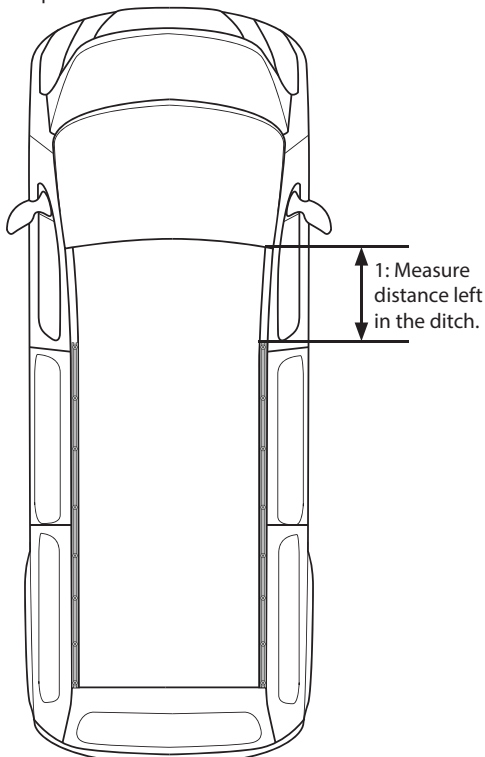
Rivet sequence. Starting from the centre and working out towards ends



## Step 7

- 1: Measure the distance between the installed track and the end of the ditch at the front of the vehicle.
- 2: Using a hacksaw or grinder with a cutting blade, cut the removed ditch fill to size.
- 3: Replace the cut down fill to the vehicle.

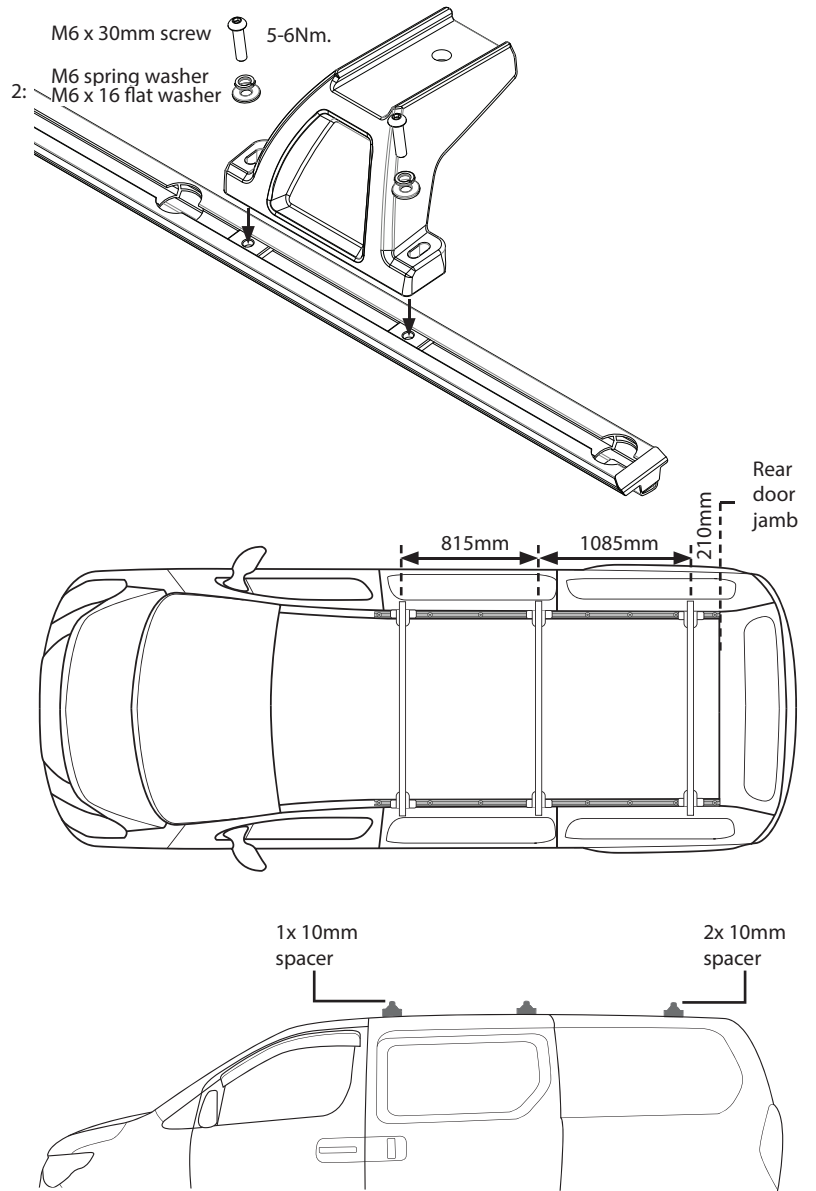
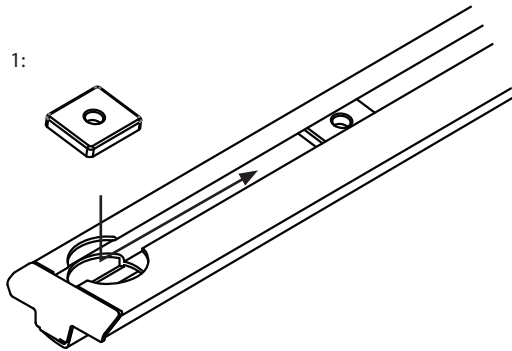
3: Replace the cut down fill.



# VAN RACKING MOUNT FITMENT

## Step 8

- 1: Slide 6 24 x 21mm channel nuts into each track.
- 2: Place the completed crossbars over the installed nuts. Fix the crossbars in place with M6 hardware shown.



### NOTE

**ATTENTION:**  
Thoroughly check all fasteners are secure before driving away.

