



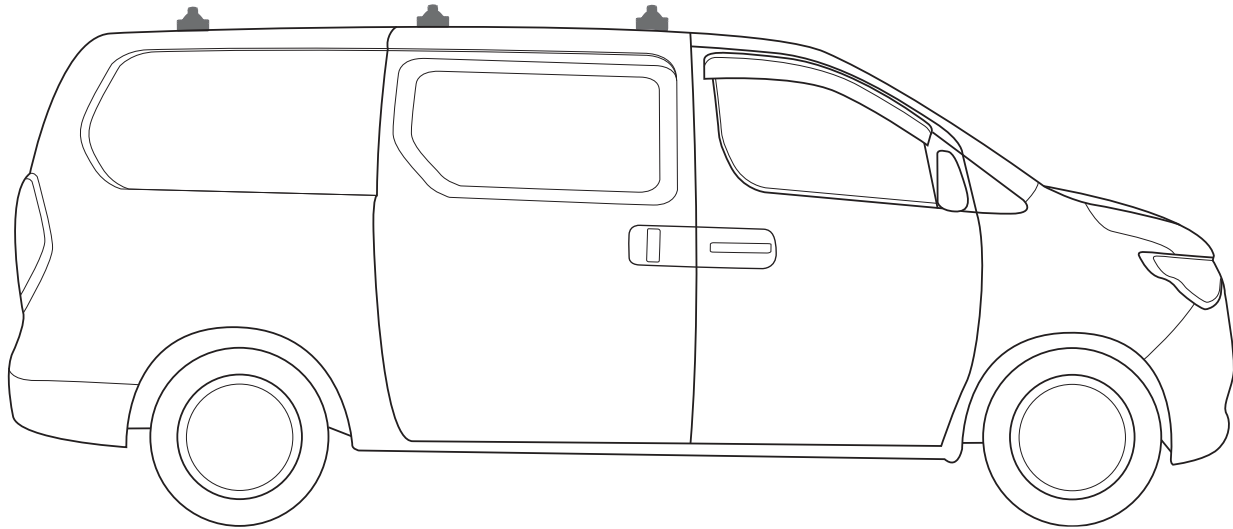
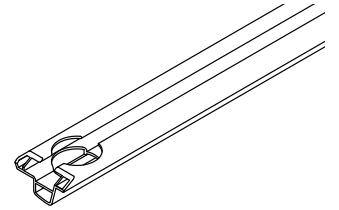
*'Tradie Tuff'*

# COMMERCIAL ROOF RACKS

**HYUNDAI** ILOAD, 2008 - ON

TRACK MOUNT

PART NUMBER: VTS01, VTS02



**Note:**

- PLEASE READ INSTRUCTIONS AND CHECK CONTENT PRIOR TO INSTALLING.
- PLACE INSTRUCTIONS IN VEHICLES GLOVE COMPARTMENT AFTER INSTALLING.



3 Bar maximum capacity: 125kg  
 2 Bar maximum capacity: 125kg  
 Tested to AS/NZS 1235-200 ADR standards

- Please check your vehicle's manual for vehicle load capacity (please do not exceed the lowest load rating) and please download and read our Load Rating guide which can be found on our website [vas.com.au](http://vas.com.au).
- Load rating is based on driving on sealed roads to road conditions and includes weight of roof rack system.

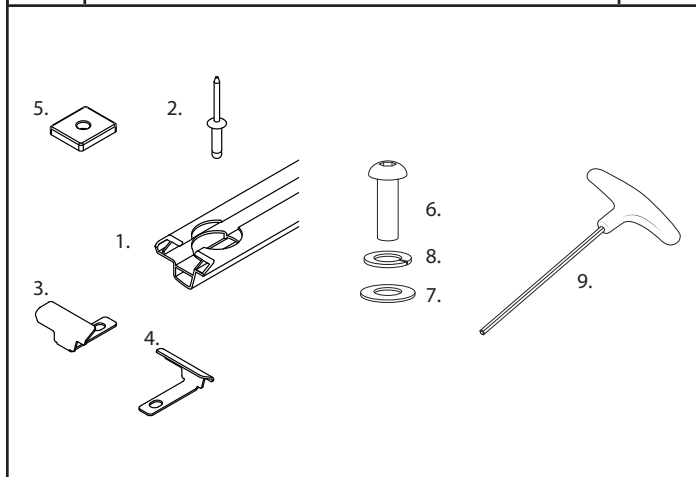
# Important information

- Complete maintenance checks weekly including bolt connections and tightness.
- Heavy loads carried near feet
- Overhanging loads should conform to relevant state laws
- Check tie down strap tension every 50klm as loads can shift
- Specialised equipment carriers such as ladder slides should be used
- Ensure your roof racks, ladder rails and or load does not inhibit the tailgate lifting on vehicles manufactured with these doors
- Check car park heights before entering
- Keep load under the maximum capacity
- Use non stretch fastening straps
- Remove roof racks prior to using an automatic car wash

**Note:** The handling characteristics of a vehicle will change when a carrier system is fitted. Driving technique such as speed reduction, cornering techniques and braking distances should be altered to allow for these changes.

## Kit Inclusions

Item	Part	3 Bar
1	Hyundai Track Pair - C140	1
2	Track Rivet - F022	17
3	End Cap Front Right/ Rear Left - C147	2
4	End Cap Front Left/ Rear Right - C148	2
5	24mm x 21mm x 4mm Channel Nut - C153	12
6	M6 x 30mm Button Head Screw - F008	12
7	M6 x 16mm Flat Washer - F011	12
8	M6 Spring Washer - F012	12
9	4mm Allen Tool - C028	1

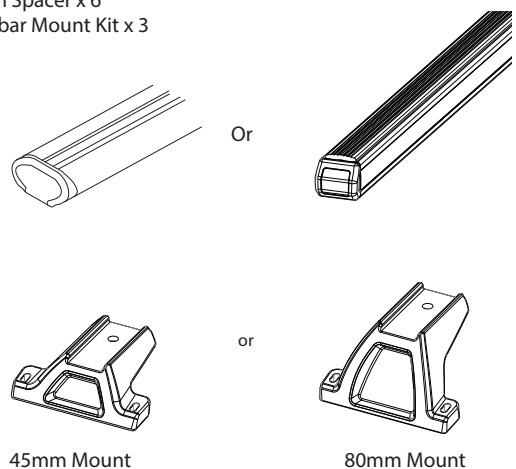


## Tools Required

- 1 - Power Drill.
- 2 - Drill Depth Guide.
- 3 - Cold Galvanising Paint.
- 4 - Butyl Mastic.
- 5 - Marker.
- 6 - Vacuum.
- 7 - 5mm Drill Bit.
- 8 - Pneumatic Rivet Gun.
- 9 - 4mm Allen Tool (provided).

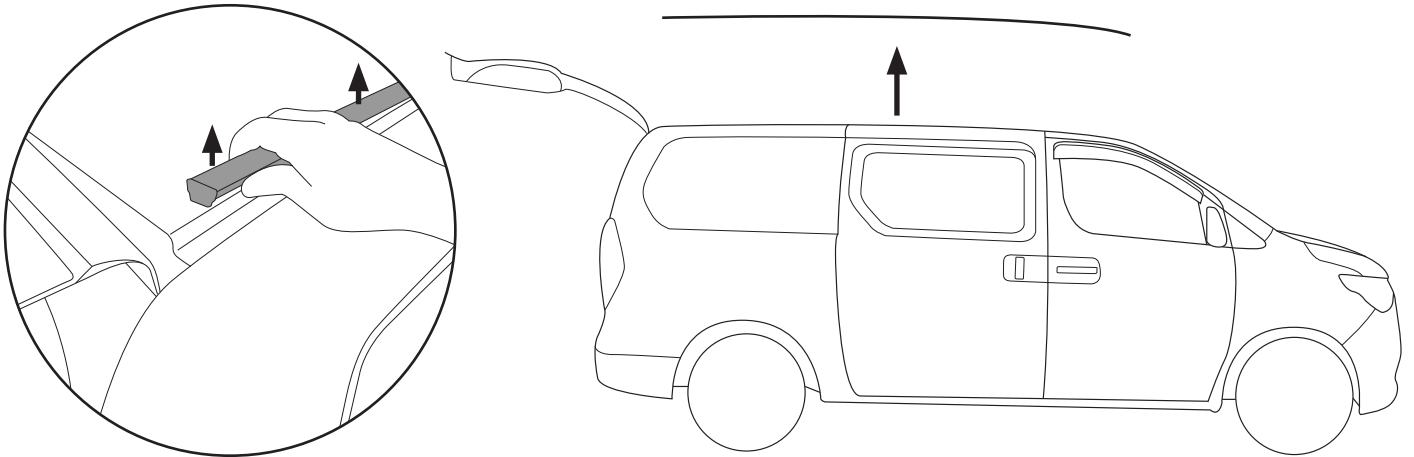
### Required kits (as separate):

- Crossbar x3 1500mm
- 10mm Spacer x 6
- Crossbar Mount Kit x 3



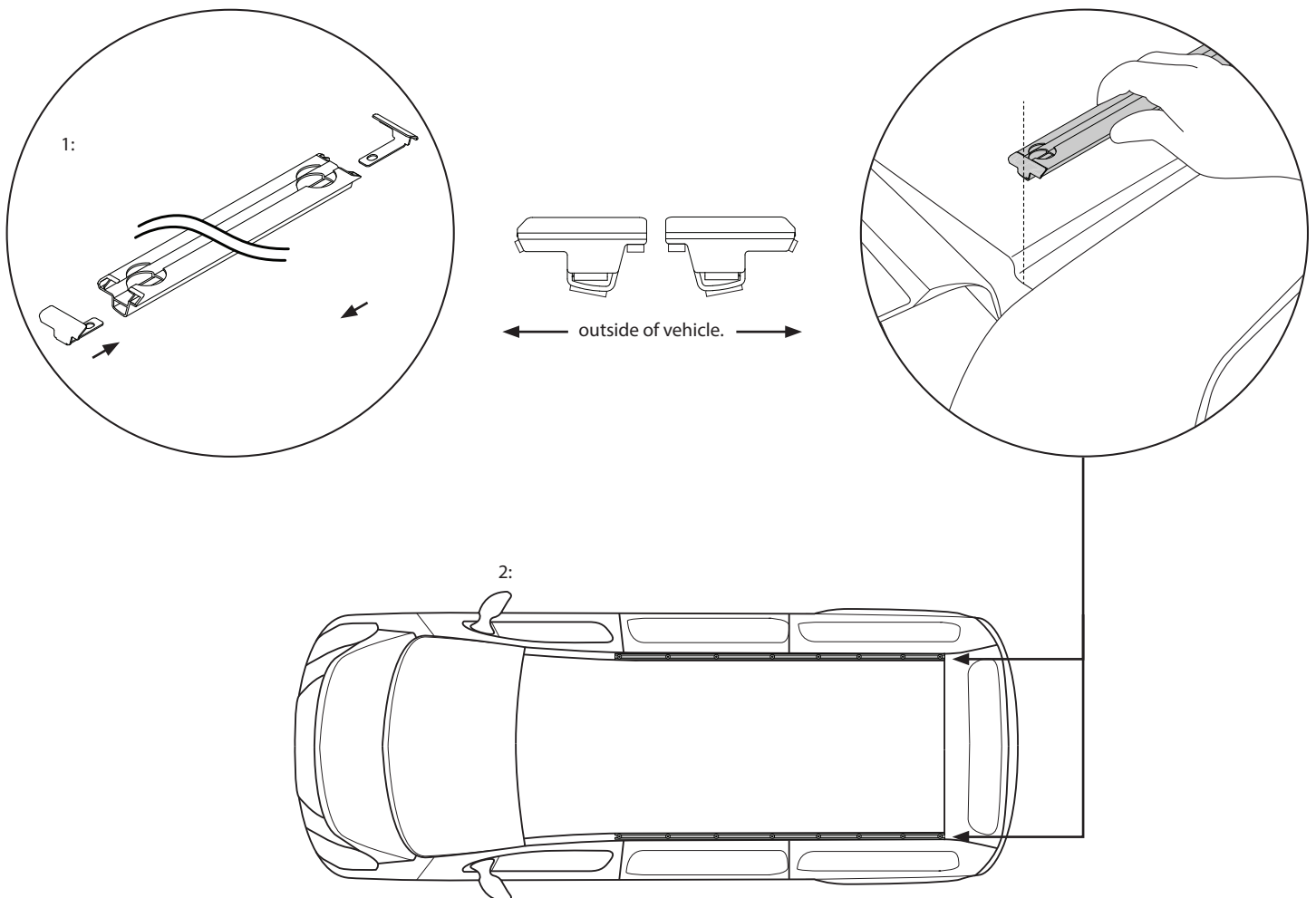
Step 1

Open the rear door of the vehicle. Move to the roof and locate the ditch fill. Starting at the rear end of the fill, carefully remove the ditch fill.



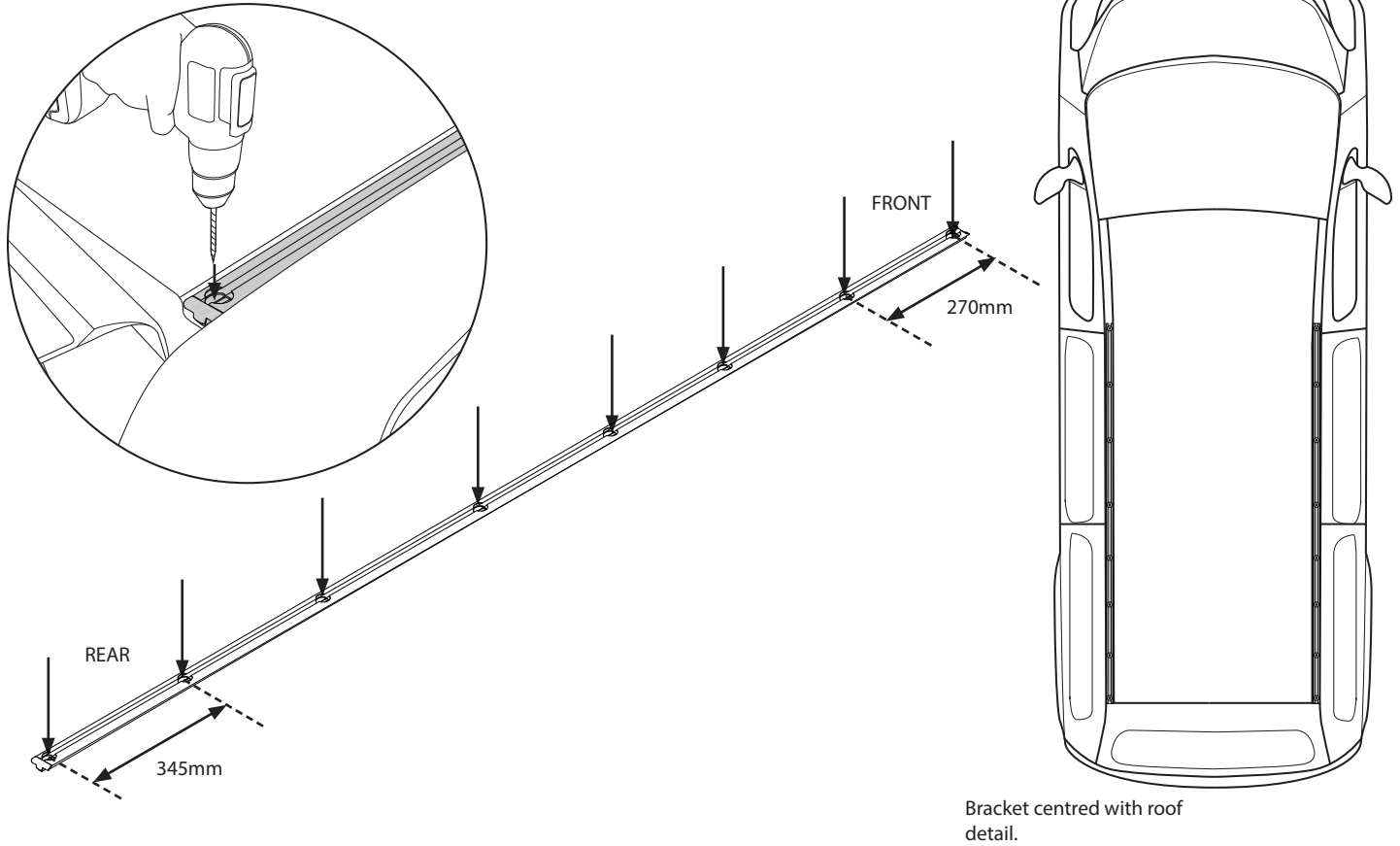
Step 2

1 - Place the end caps into either end of the track. 2 - Put the tracks into the roof ditches (be aware of track orientation). The tracks line up flush with the end of the ditch at the vehicles rear.



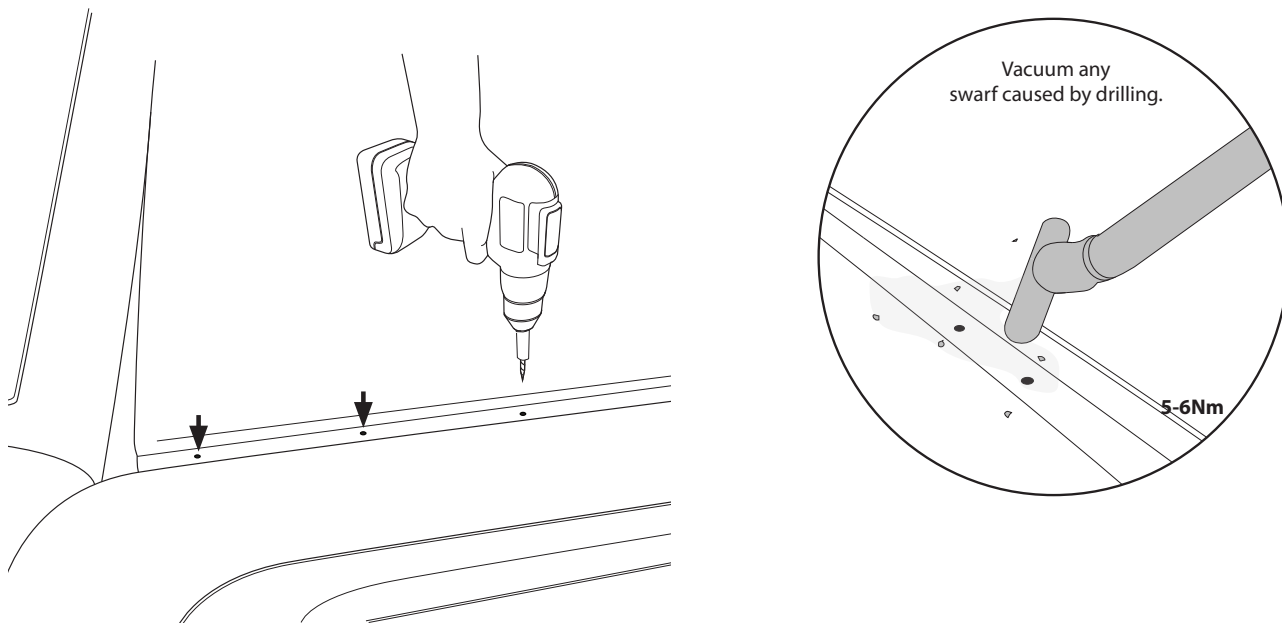
Step 3

With the tracks in place, use a 5mm drill bit and create a spot mark through each rivet hole in the track onto the vehicle below. Remove the tracks when done. Do not drill through the roof at this stage.



Step 4

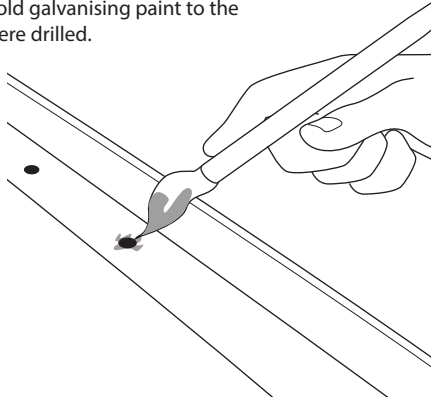
With a 5mm drill bit, now drill out all the points made in the roof in step 3. **A drill depth guide set to 5-8mm must be used to protect the interior of your vehicle.**



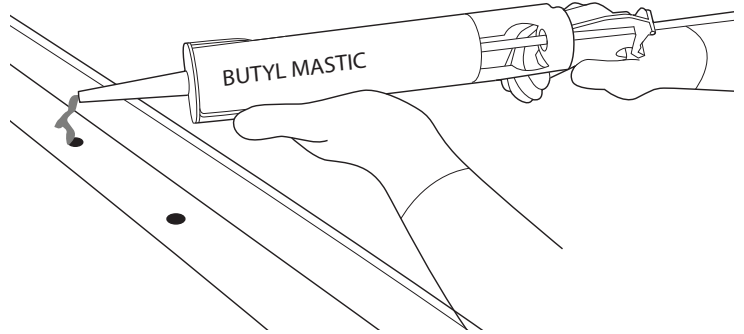
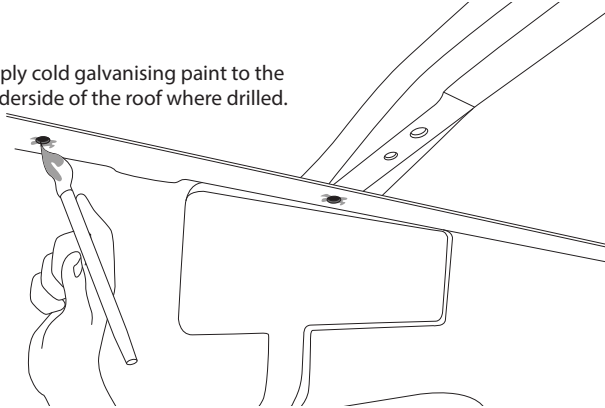
Step 5

Apply cold galvanising paint to the holes drilled. Allow time to dry. Using butyl mastic, apply a water seal to the holes drilled.

Apply cold galvanising paint to the roof where drilled.



Apply cold galvanising paint to the underside of the roof where drilled.



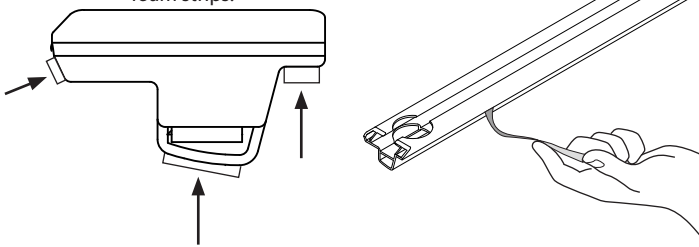
Step 6

1: Remove the protective tape from the foam on the tracks.

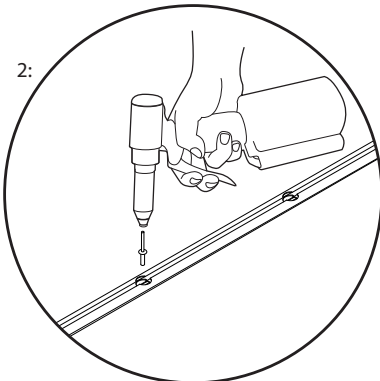
2: Place the tracks back onto place on the roof. Using a pneumatic rivet gun with the rivets provided, fixed the tracks to the roof.

**NOTE:** If the holes don't align due to poor positioning, do not elongate holes in the roof. The structural rivet is designed to have a maximum holding strength in a 4.8-5.0mm hole.

1: Remove the protective tape found here, on the foam strips.

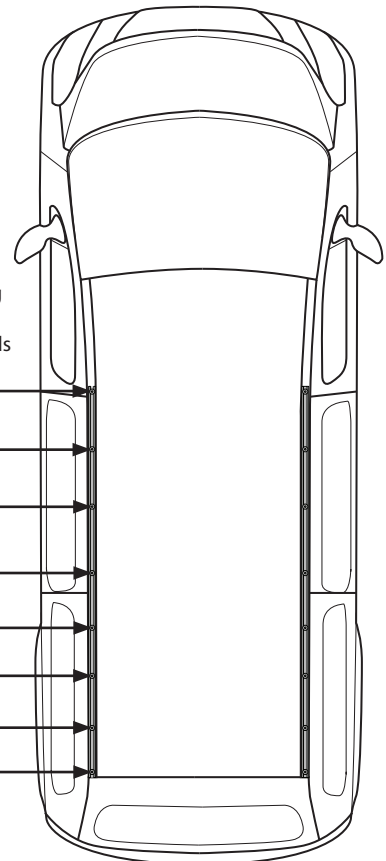


2:



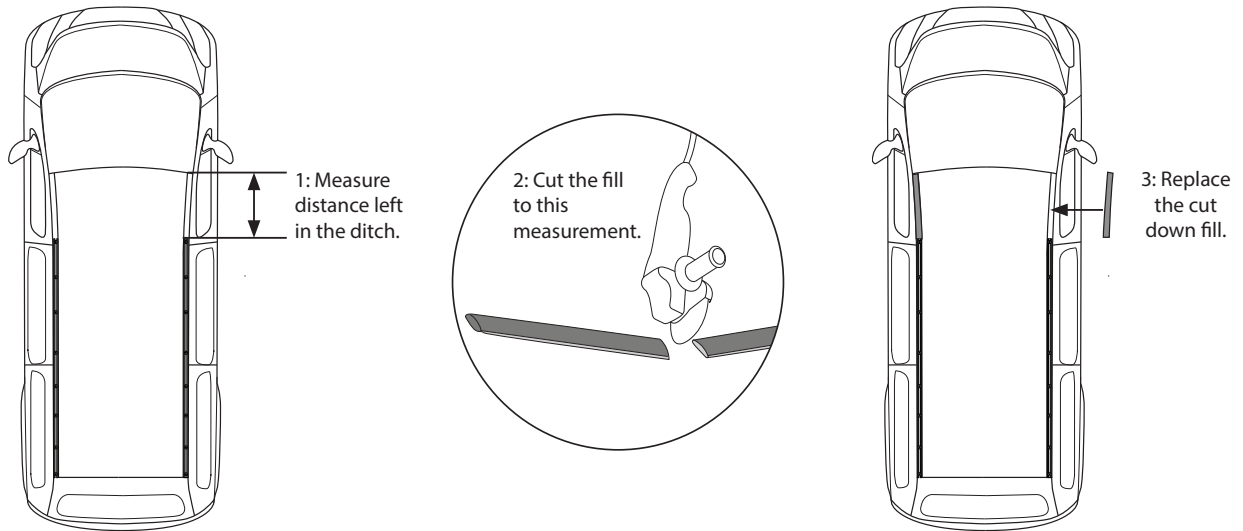
Rivet sequence. Starting from the centre and working out towards ends

- 7.
- 5.
- 3.
- 1.
- 2.
- 4.
- 6.
- 8.



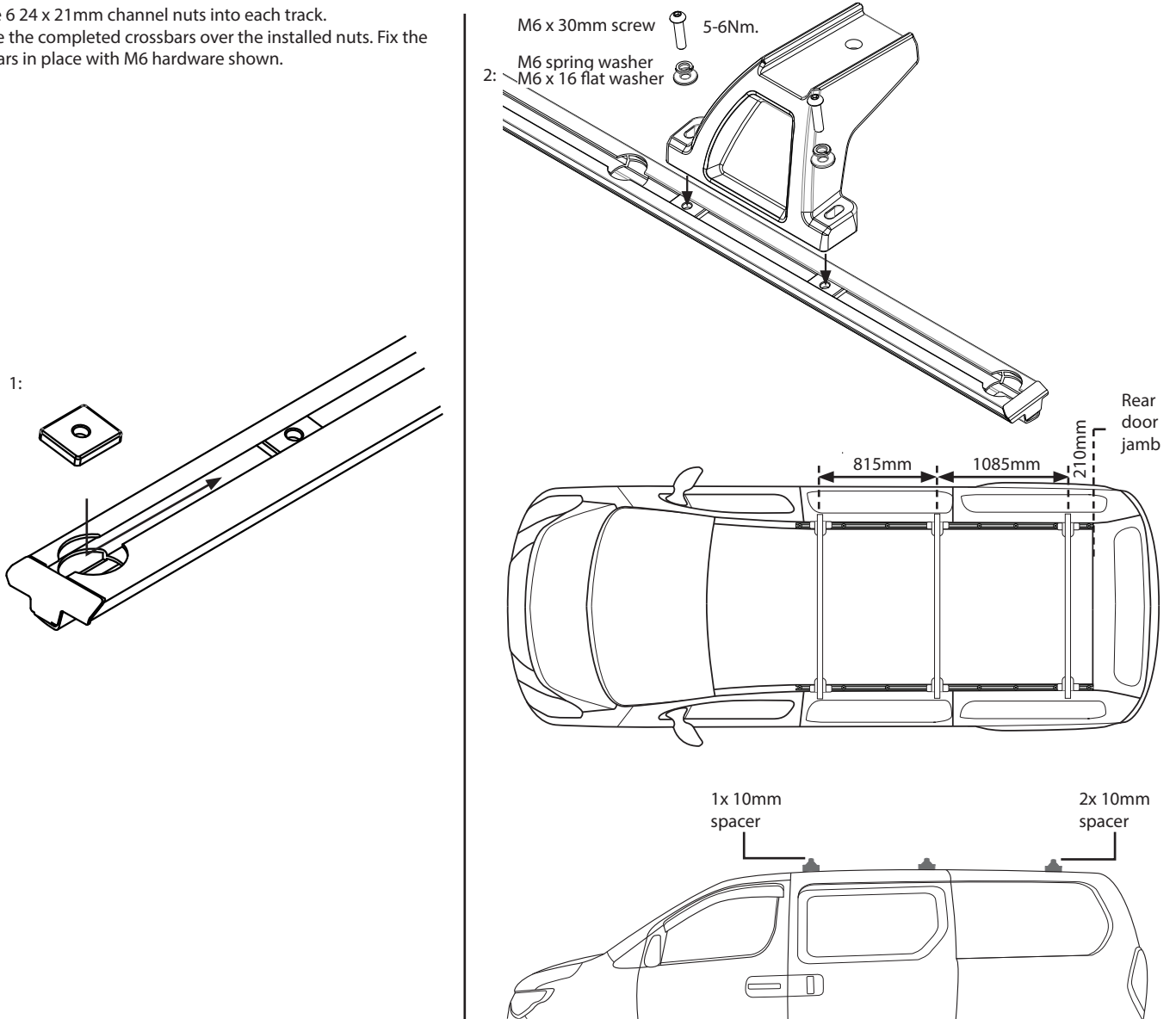
Step 7

- 1: Measure the distance between the installed track and the end of the ditch at the front of the vehicle.
- 2: Using a hacksaw or grinder with a cutting blade, cut the removed ditch fill to size.
- 3: Replace the cut down fill to the vehicle.



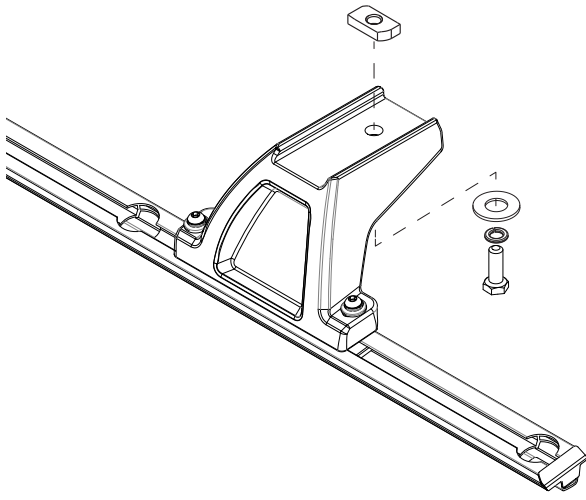
Step 8

- 1: Slide 6 24 x 21mm channel nuts into each track.
- 2: Place the completed crossbars over the installed nuts. Fix the crossbars in place with M6 hardware shown.

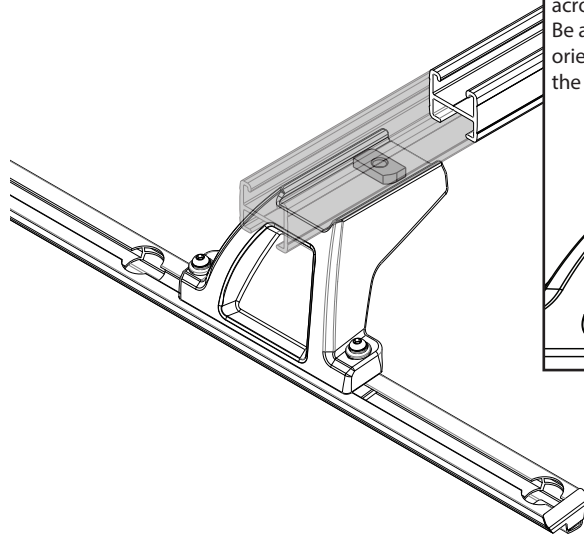


Step 9

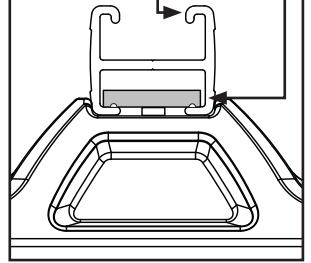
Install the crossbar hardware, found in the crossbar mount kit as shown (refer VAS Mount instructions).



Slide the crossbar over the installed channel nut.

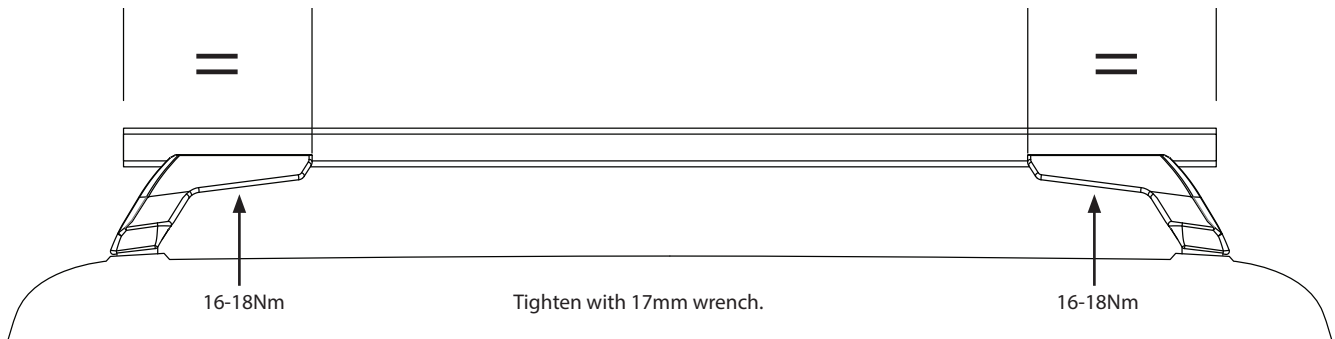


Note: Channel nut is situated across the bar.  
Be aware of crossbar orientation. Curved edge to the top as seen.



Step 10

Ensure crossbars are evenly spaced. Tighten in place using an 17mm wrench (refer to VAS Mount instructions).



NOTE

**ATTENTION:** Thoroughly check all fasteners are secure before driving away. Heights are for standard unloaded vehicles. Always check your specific vehicles height.

