



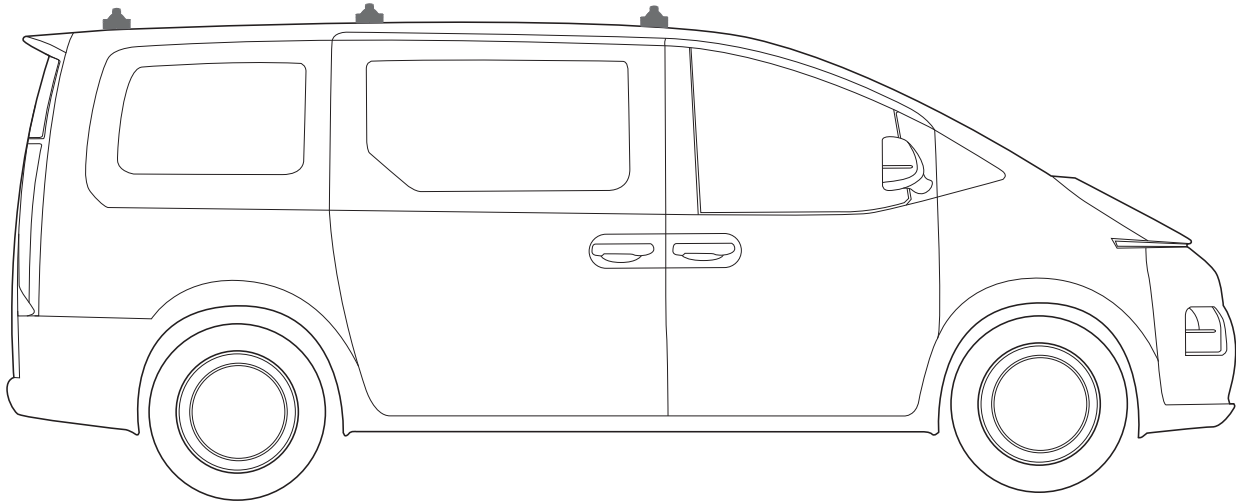
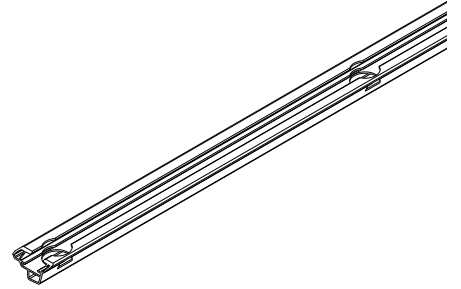
'Tradie Tuff'

# COMMERCIAL ROOF RACKS

**HYUNDAI** Staria, 2021 - ON

TRACK MOUNT

PART NUMBER: VAS.RC1230, VAS.RA1230.



**Note:**

- PLEASE READ INSTRUCTIONS AND CHECK CONTENT PRIOR TO INSTALLING.
- PLACE INSTRUCTIONS IN VEHICLES GLOVE COMPARTMENT AFTER INSTALLING.



3 Bar maximum capacity: 125kg  
2 Bar maximum capacity: 125kg  
Tested to AS/NZS 1235-2000 ADR standards

- Please check your vehicle's manual for vehicle load capacity (please do not exceed the lowest load rating) and please download and read our Load Rating guide which can be found on our website [vas.com.au](http://vas.com.au).
- Load rating is based on driving on sealed roads to road conditions and includes weight of roof rack system.

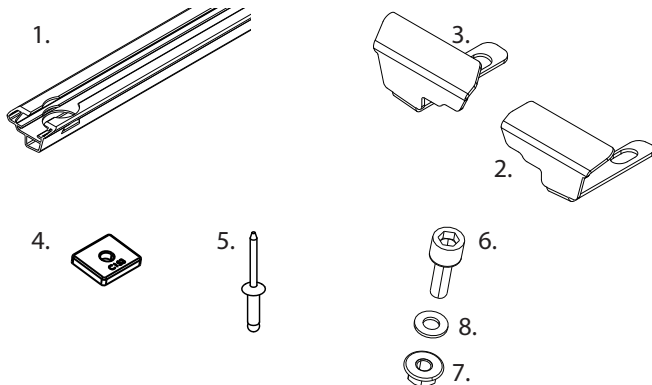
# Important information

- Complete maintenance checks weekly including bolt connections and tightness.
- Heavy loads carried near feet
- Overhanging loads should conform to relevant state laws
- Check tie down strap tension every 50klm as loads can shift
- Specialised equipment carriers such as ladder slides should be used
- Ensure your roof racks, ladder rails and or load does not inhibit the tailgate lifting on vehicles manufactured with these doors
- Check car park heights before entering
- Keep load under the maximum capacity
- Use non stretch fastening straps
- Remove roof racks prior to using an automatic car wash

**Note:** The handling characteristics of a vehicle will change when a carrier system is fitted. Driving technique such as speed reduction, cornering techniques and braking distances should be altered to allow for these changes.

## Kit Inclusions

Item	Part	Qty
1	Hyundai Track (pair) - C573	1
2	Track End Cap FR RL - C674R	2
3	Track End Cap FL RR - C674L	2
4	Track Channel Nuts - C153	12
5	Track Rivet - F022	2
6	M5 Cap Screw - F074	14
7	M5 Flanged Nut - F040	14
8	M5 Flat Washer - F041	12

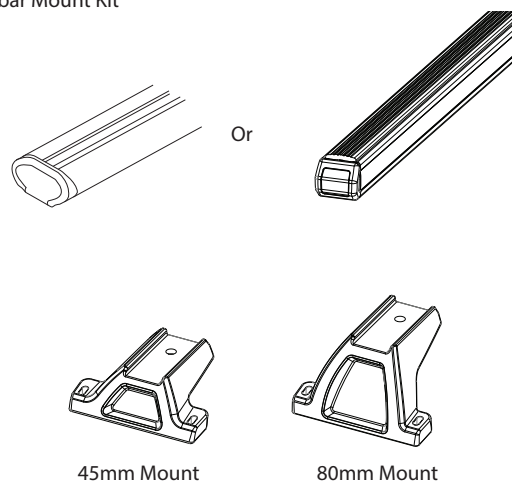


## Tools Required

- |                                |                       |
|--------------------------------|-----------------------|
| 1 - Power Drill.               | 9 - 8mm Ring Spanner. |
| 2 - Drill Depth Guide.         | 10 - 3mm Allen Tool.  |
| 3 - Cold Galvanising Paint.    | 11 - Masking Tape.    |
| 4 - Butyl Mastic.              | 12 - Tape Measure.    |
| 5 - Vacuum.                    | 13 - Centre punch.    |
| 6 - 5mm Drill Bit.             |                       |
| 7 - Pneumatic Rivet Gun.       |                       |
| 8 - 4mm Allen Tool (provided). |                       |

### Required kits (as separate):

Crossbar x3 1500mm  
Crossbar Mount Kit

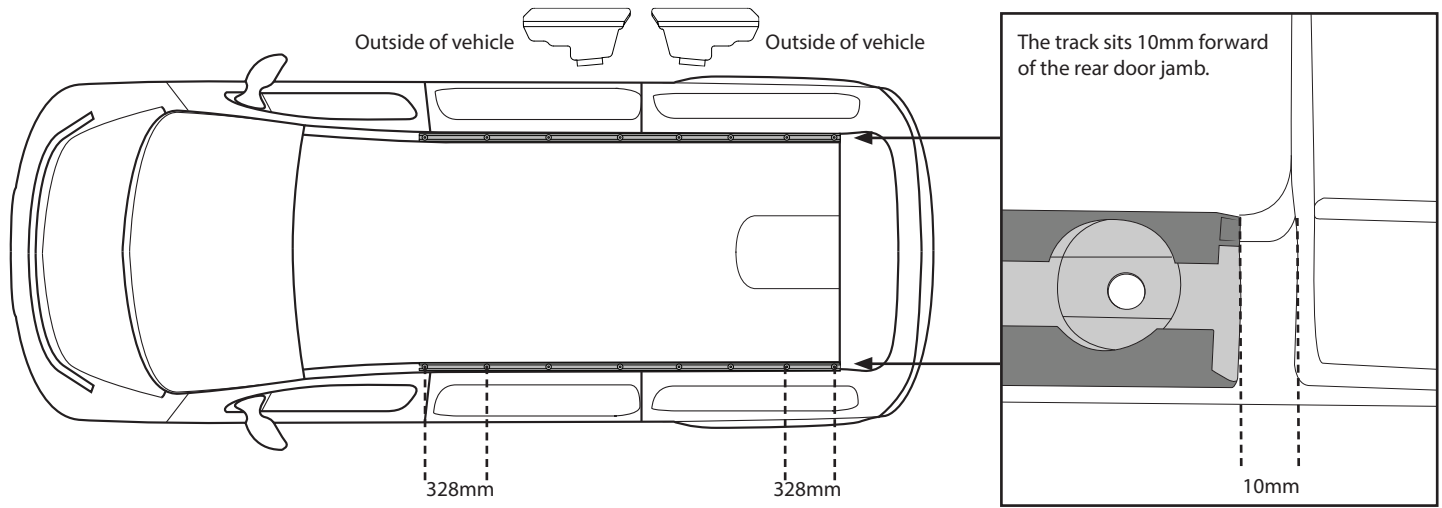


**VAS**  
21 Hallmark Street, Pendle Hill  
NSW 2145, Australia  
+61 2 9631 0555  
vas.com.au

Document No: D-055  
Issue No: 03

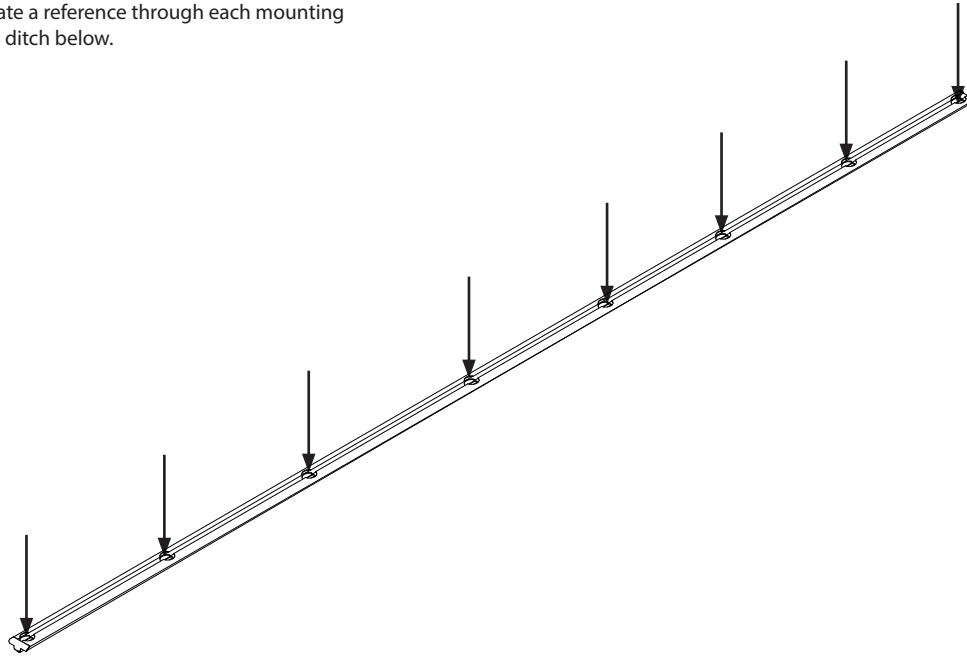
Step 1

Place the tracks into the roof ditch. Track orientation can be determined by placing the overhang section of track, above the roof ditch filler.



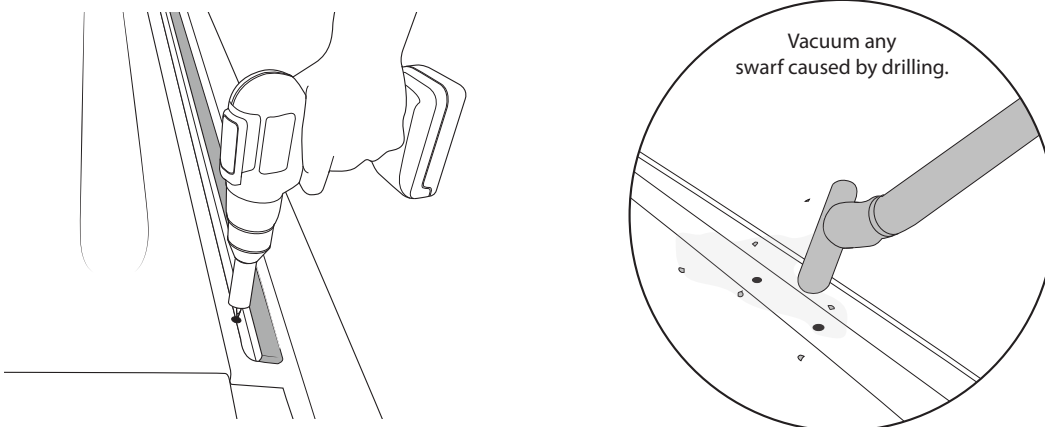
Step 2

Using a centre punch, create a reference through each mounting hole in the track, onto the ditch below.



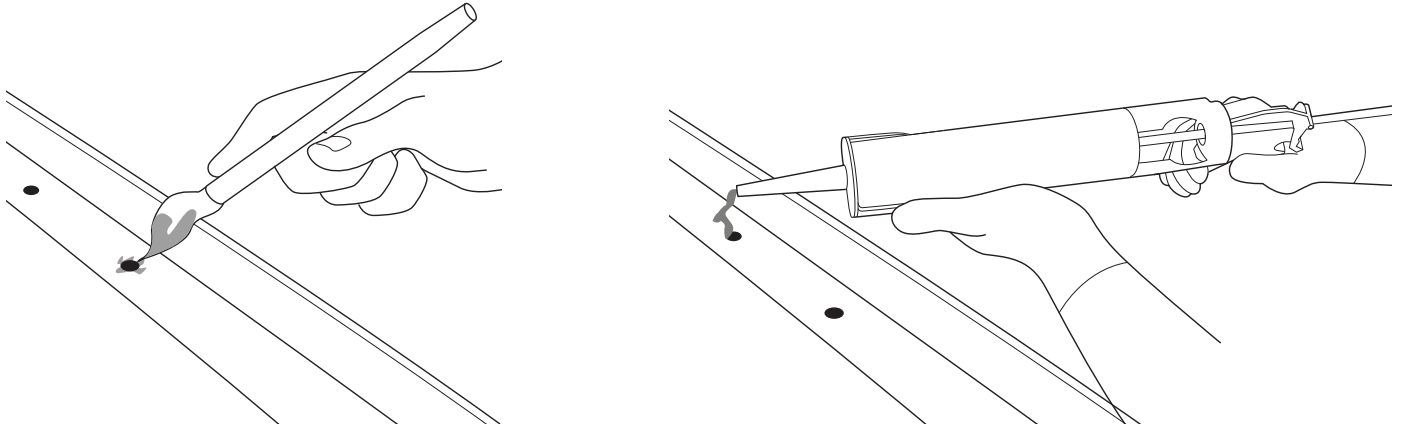
Step 3

Remove the track from the ditch. Using a 5mm bit and a stop set to 10mm, drill through all references made.



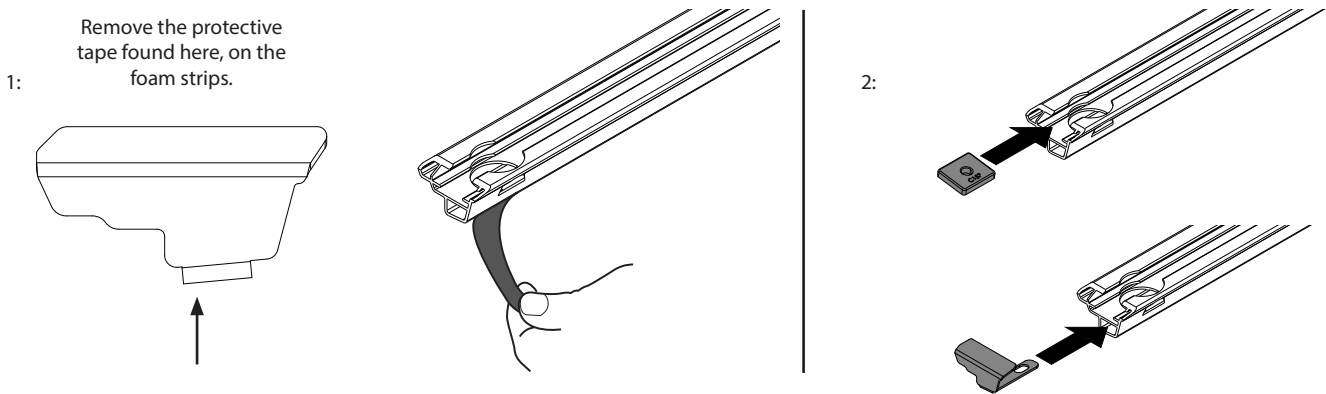
Step 4

Apply cold galvanising paint to the holes drilled. Allow time to dry. Using butyl mastic, apply a water seal to the holes drilled.



Step 5

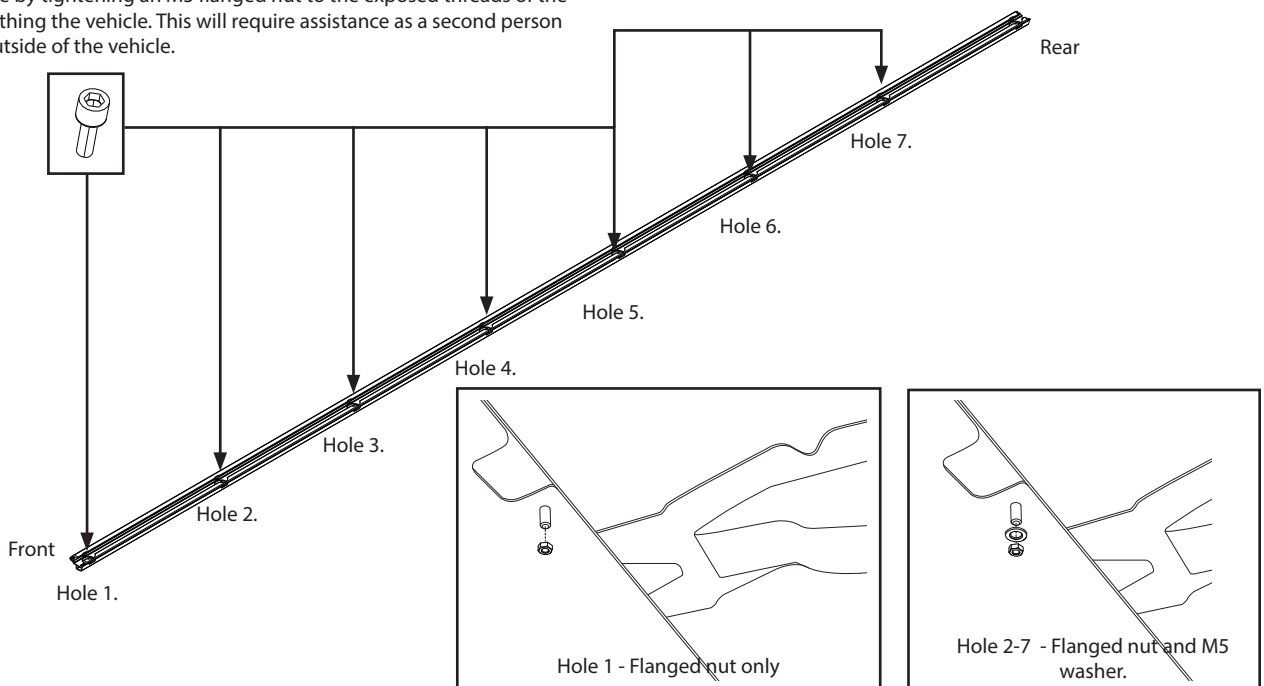
(1) Remove the backing tape from the tracks. (2) Insert 6x square nuts into each track. Place end caps into place.



Step 6

Place the tracks back into the roof. Place a, M5 cap head screw through the first 7 holes in the track. Leave the last hole at this stage.

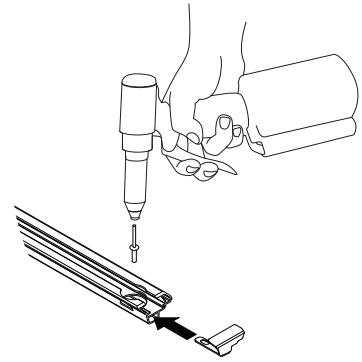
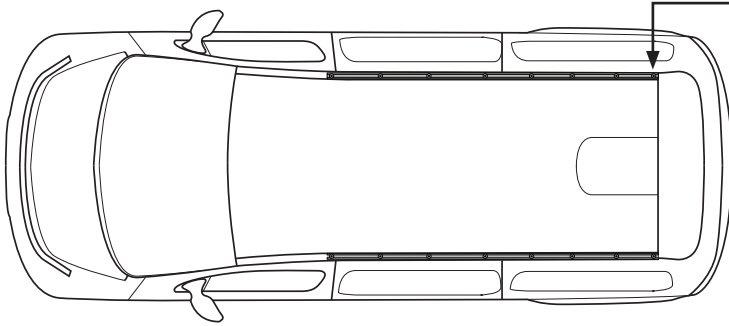
Fix the tracks in place by tightening an M5 flanged nut to the exposed threads of the bolts in the track, withing the vehicle. This will require assistance as a second person tightens from the outside of the vehicle.



Step 7

Use a pneumatic rivet gun and fix the rear hole of the track with the provided rivets.

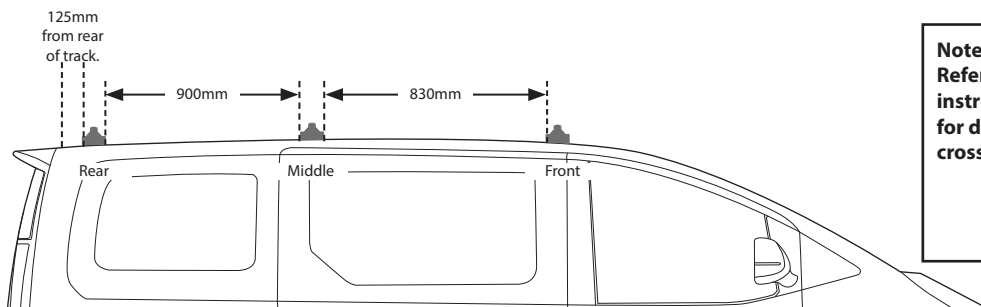
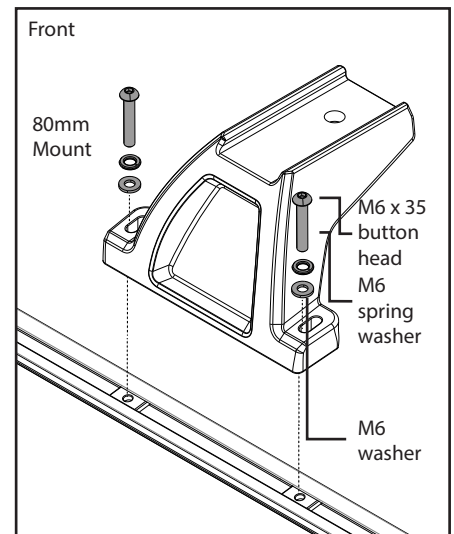
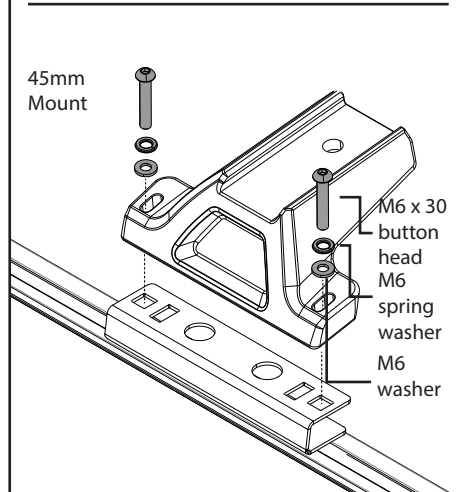
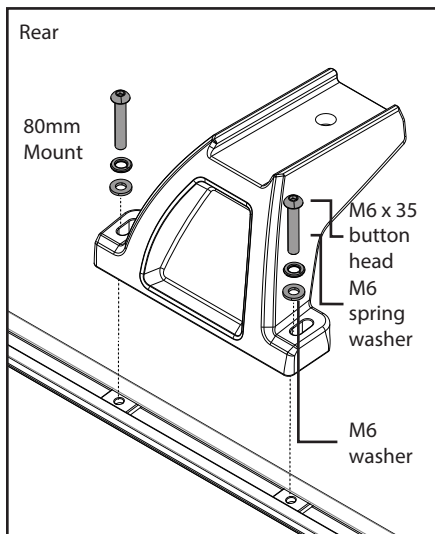
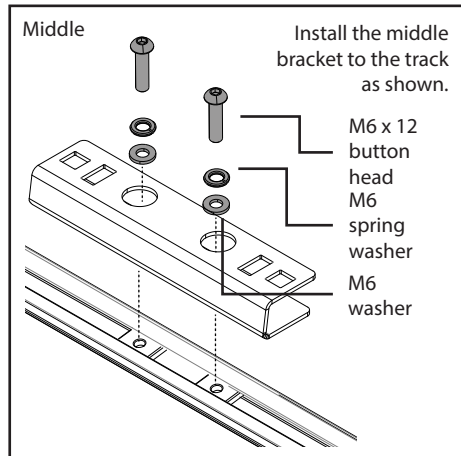
**NOTE:** If the holes don't align due to poor positioning, do not elongate holes in the roof. The structural rivet is designed to have a maximum holding strength in a 4.8-5.0mm hole.



Step 8

Place the crossbar assemblies and spacers in position as shown.

**Middle bracket is sold as separate.**



**Note:** Refer to Mount kit instruction (D-041), for details on crossbar fitment.