

**MAXIMUM PRODUCT LOAD RATING: 100 kg** 

**IMPORTANT:**

- **LOAD = WEIGHT OF PLATFORM or BARS + MOUNTING SYSTEM + ACCESSORIES + CARGO**
- **PLEASE REFER TO VEHICLE MANUFACTURER SPECIFICATIONS FOR MAX ROOF LOAD CAPACITY OF VEHICLE. THE LOWEST LOAD RATING APPLIES.**
- **OFFROAD RATING: SCAN QR CODE FOR LOCKNLOAD LOAD RATING GUIDE. REDUCTIONS MAY APPLY.**



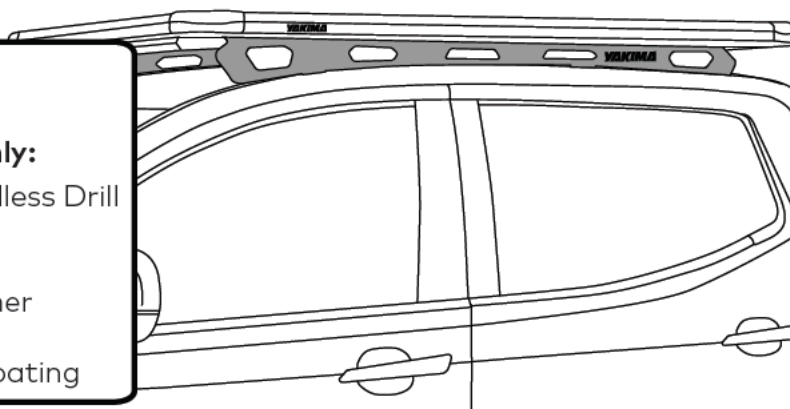
## FIRST TIME INSTALLATION

- Please read instructions carefully before installation.
- Check the contents of kit. Each spine has the last four digits of the kit's part number lasered in. Contact your YAKIMA dealer if any parts appear missing, incorrect or damaged.
- Clean your roof thoroughly prior to fitting the LockNLoad RuggedLine.
- Place these instructions in the vehicle's glove box after installation is complete.



**TOOLS REQUIRED:**

- Measuring Tape
- Marking pen
- Tin Snips
- 13 mm Spanner
- Trim Remover Tools
- T50 Torx Socket
- Stanley Knife
- Torque Wrench
- **D-Max SX Base Models only:**
  - Power or Cordless Drill
  - 7 mm Drill Bit
  - Rotary Tool
  - Vacuum Cleaner
  - Zinc Rich Cold Galvanising Coating

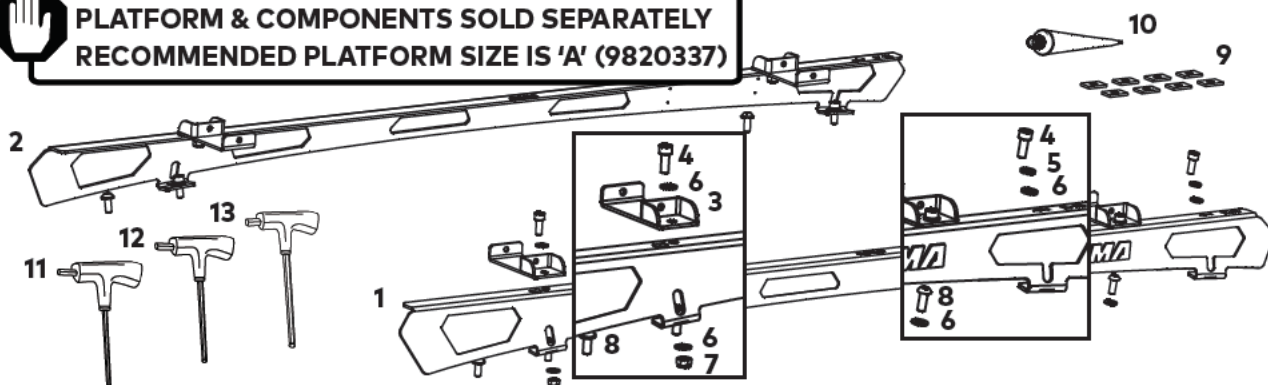


## KIT CONTENTS

ITEM	COMPONENT	QTY	ITEM	COMPONENT	QTY
1.	Colorado / D-Max Left Spine 1010	x1	8.	M8 Button Head Capscrew 20 mm	x4
2.	Colorado / D-Max Right Spine 1010	x1	9.	Foam Adhesive	x8
3.	Pivot Bracket Assembly	x4	10.	Loctite 598 Tube	x1
4.	M8 Socket Head Capscrew 20 mm	x8	11.	4 mm T Handle Ball End Allen Key	x1
5.	M8 Spring Washer	x4	12.	5 mm T Handle Ball End Allen Key	x1
6.	M8 Washer	x16	13.	6 mm T Handle Ball End Allen Key	x1
7.	M8 Nyloc Nut	x4			



**PLATFORM & COMPONENTS SOLD SEPARATELY**  
**RECOMMENDED PLATFORM SIZE IS 'A' (9820337)**



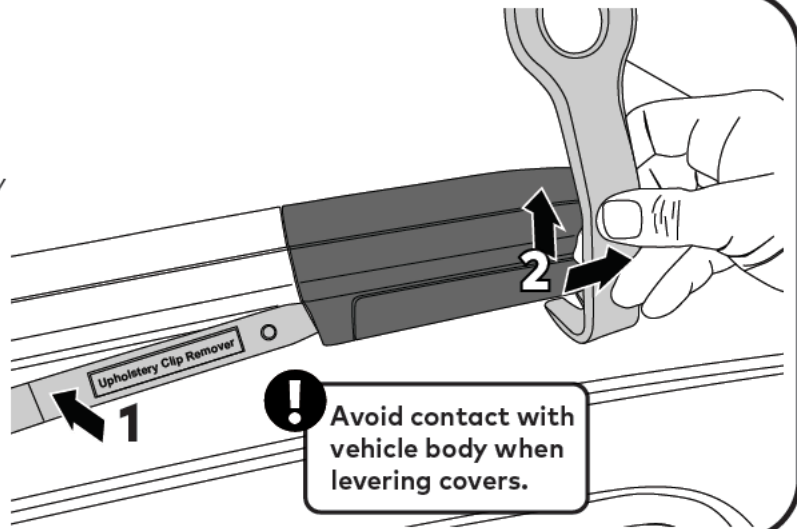
# REMOVING FACTORY ROOF RAILS

## HOLDEN COLORADO Z71, HSV SPORTSCAT AND ISUZU D-MAX LS-T

### 1 UNCLIP PLASTIC RAIL COVERS

Using appropriate trim remover tools as pictured, release the plastic rail end covers by carefully levering out the inside rail cover (1) to release the internal clips, then using another trim remover tool, position under cover to lift it up and across (2).

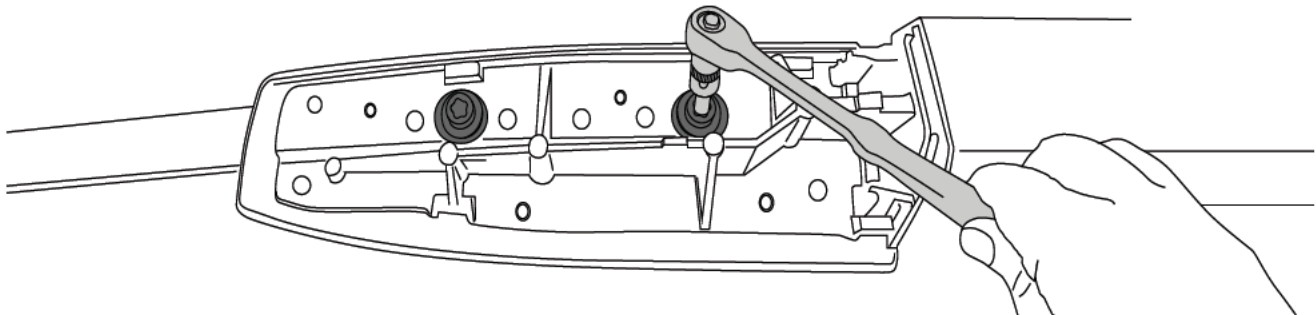
**Avoid levering against the body work.**



### 2 REMOVE COVER HARDWARE

Remove exposed hardware (2x bolts at each rail end) using a T50 Torx Socket and Wrench. Complete steps 1 - 2 for front and rear covers and repeat on opposite side of vehicle.

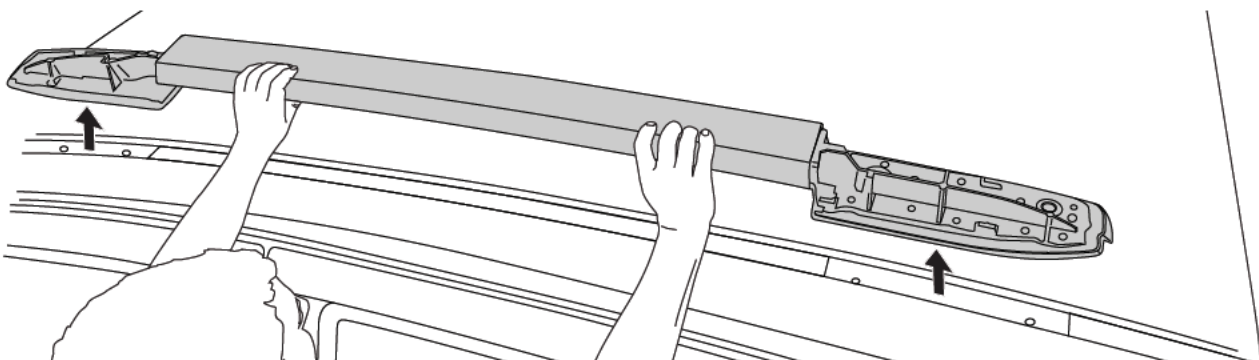
Store removed hardware away in a safe place.



### 3 REMOVE RAILS

Lift roof rails upwards and carefully remove from the roof, avoiding contact with the vehicle body.

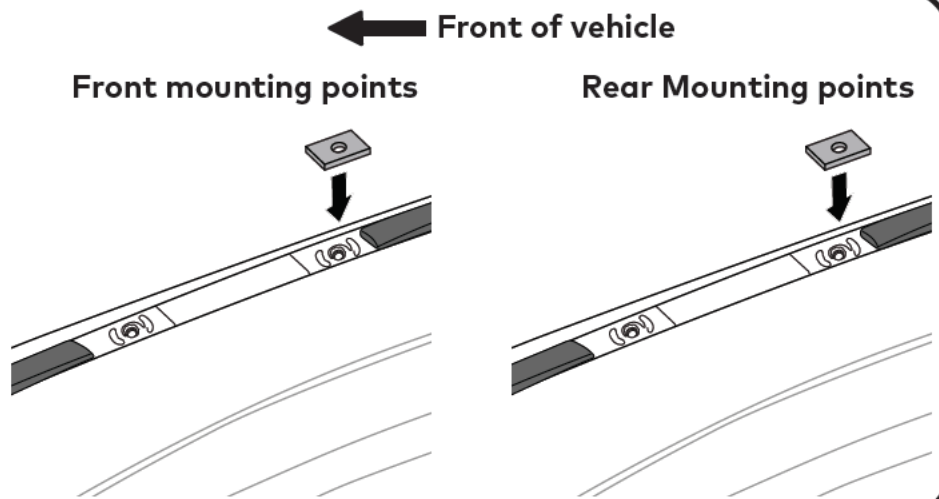
Store removed rails away in a safe place.



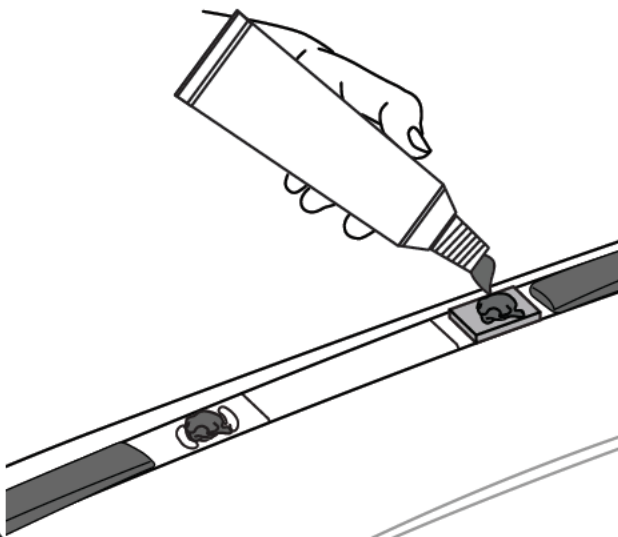
**4****AFFIX FOAM ADHESIVE**

Apply Foam Adhesive over all the rear most holes at each of the four mounting points.

Apply with adhesive side to vehicle.

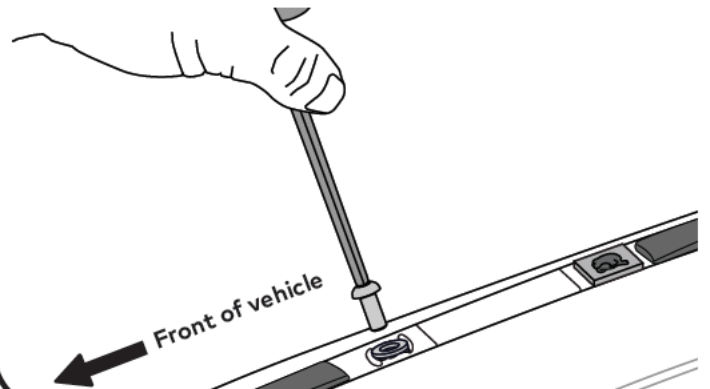
**5****APPLY LOCTITE**

Liberaly apply the supplied Loctite to the inside surface and on top of all holes **on one side of vehicle.**

**6****FILL IN FRONT MOST HOLES**

Assemble 1x M8 Button Head Capscrew and 1x M8 Washer as shown and secure into all four front most mounting point holes (without Foam Adhesive) using the provided 5 mm T Handle Ball End Allen Key.

Tighten to 5 Nm.

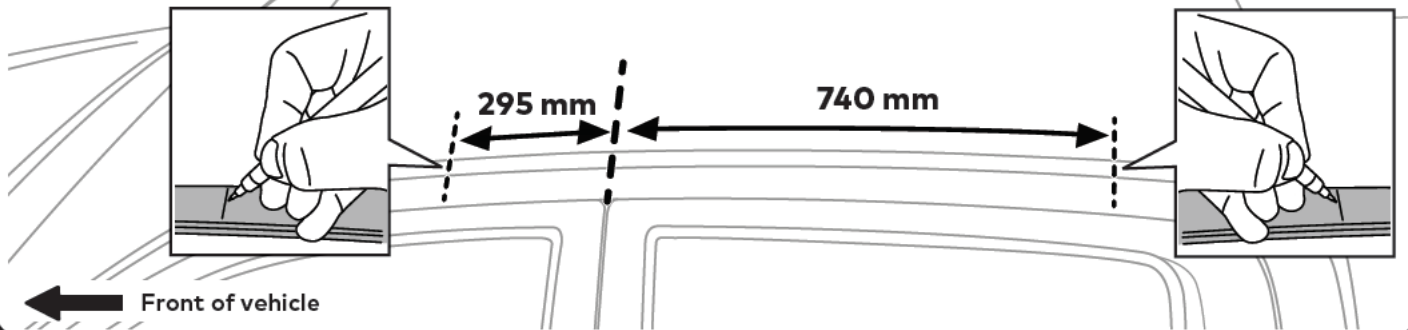
**!**

**PROCEED TO PAGE 7 AND CONTINUE FROM 'MOUNTING RUGGEDLINE AND LockNLoad PLATFORM'**

## REVEAL MOUNTING POINTS (BARE ROOF MODELS)

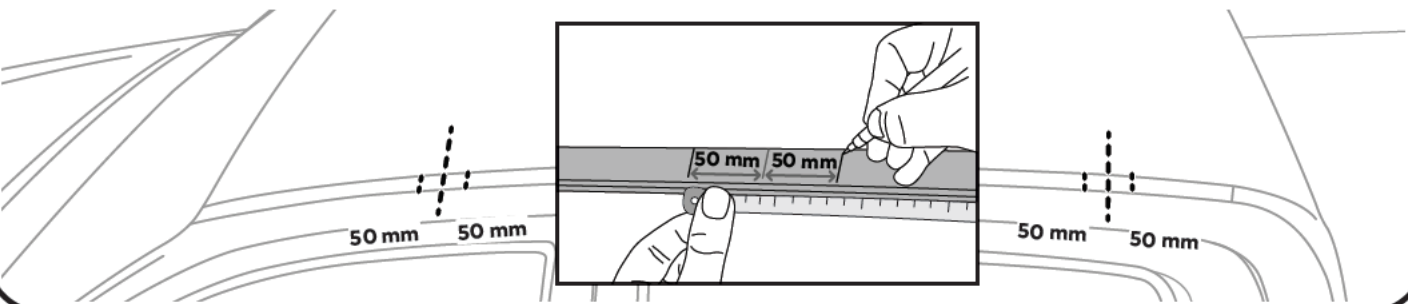
### 1a MEASURE AND MARK ROOF TRIM

Using a Measuring Tape, measure 295 mm forward and 740 mm back from between the door jamb. Mark each measurement on trim with a pen as shown.



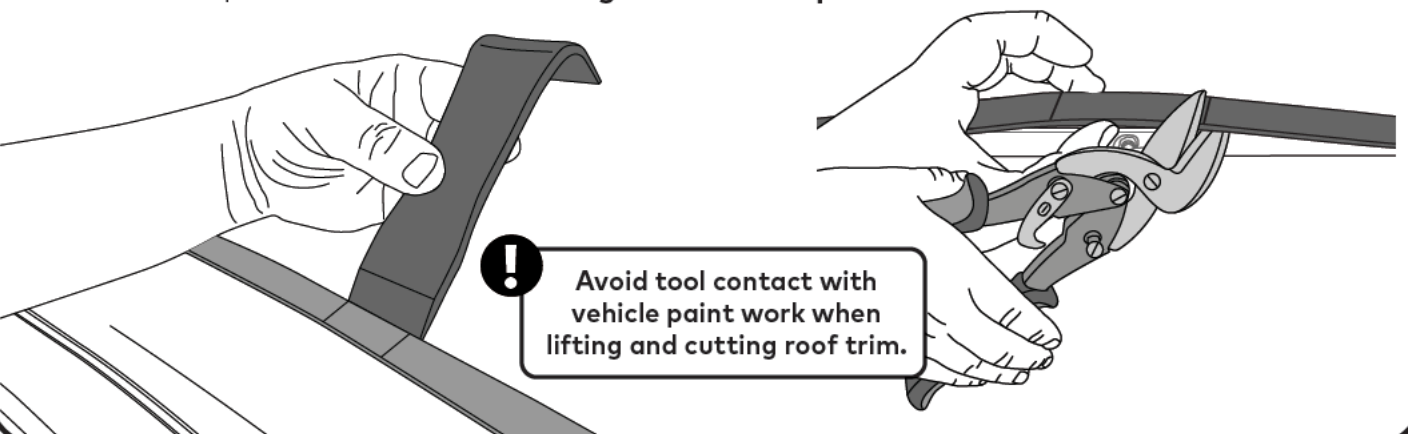
### 1b MEASURE AND MARK ROOF TRIM

Measure 50 mm either side of each marked position on the roof trim as shown. Mark measurements on trim with a pen as shown.



### 2 CUT ROOF TRIM

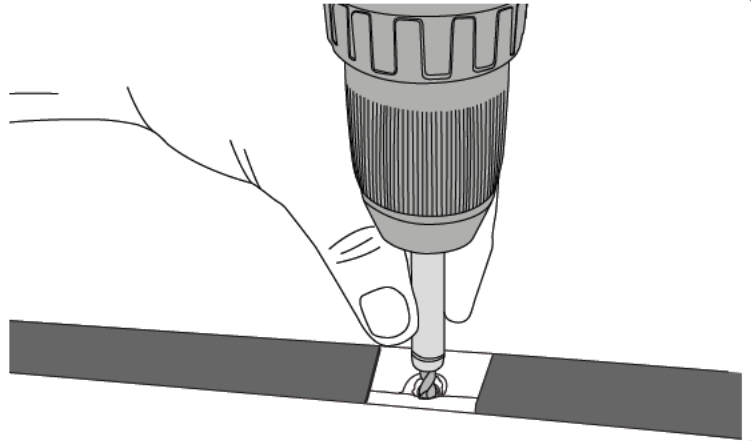
Using an appropriate trim remove tool as pictured, carefully lift up the roof trim, and using your fingers to hold trim secure, cut the trim at the measured sections from Step 1b using a pair of Tin Snips. **Avoid tool contact against vehicle paint work.**



**PROCEED TO PAGE 6 AND CONTINUE FROM STEP 3**

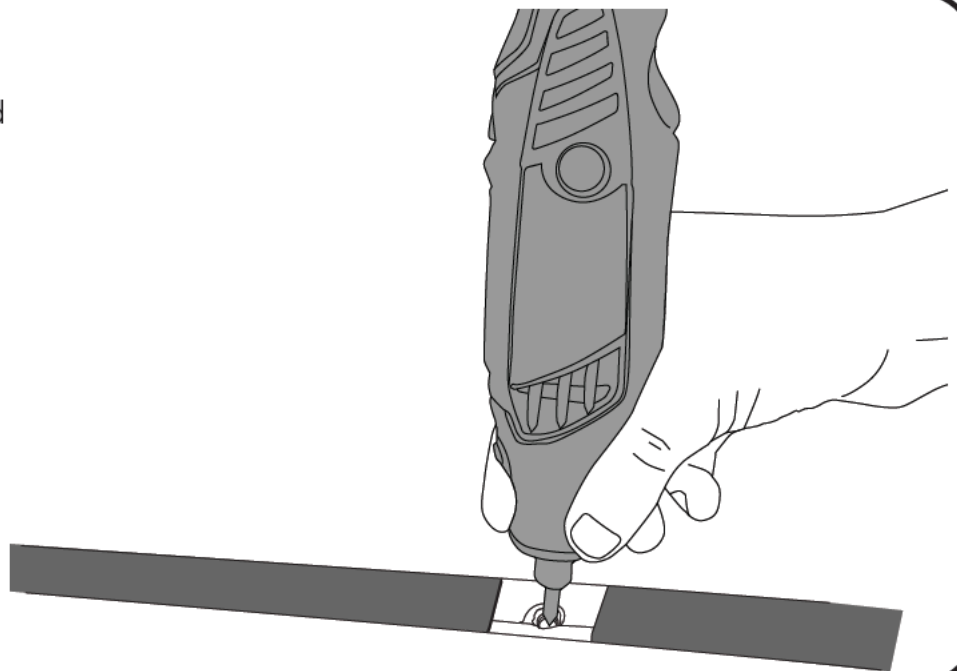
## **A** DRILL TO REVEAL MOUNTING POINTS

The Mounting Points on the D-Max SX base models are covered by a metal roof skin that needs to be drilled using a 7 mm Drill Bit (not supplied).



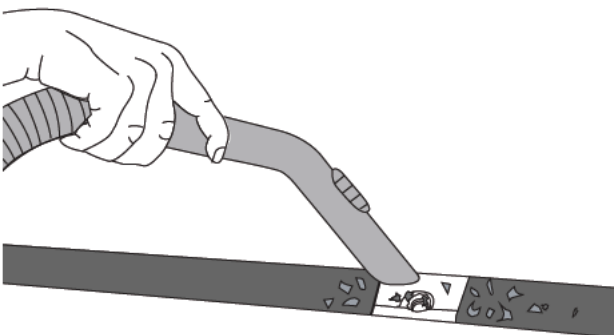
## **B** DIE GRIND HOLES

Die Grind the opened out holes from the previous step using a Rotary Tool. This will expose the mounting points below.



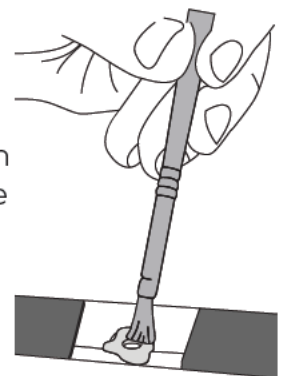
## **C** REMOVE SWARF

Avoid pushing swarf into the newly drilled holes by removing swarf from roof channel with a Vacuum Cleaner.



## **D** APPLY GALVANISING SOLUTION

Liberaly apply a Zinc Rich Cold Galvanising Solution to the inside surface and surrounds of each hole. Allow solution to become touch dry (approx. 10 min depending on product used).



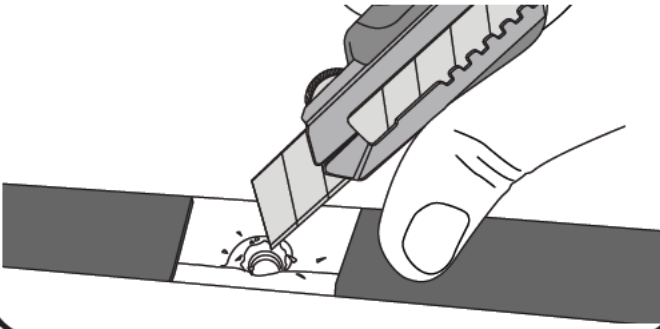
**Apply liberally in and around holes**



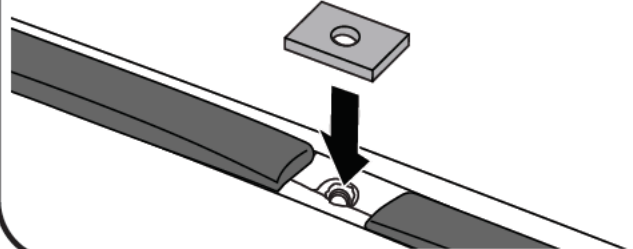
**PROCEED TO PAGE 6 AND CONTINUE FROM STEP 4**

**3****SCRAPE AWAY SEALS**

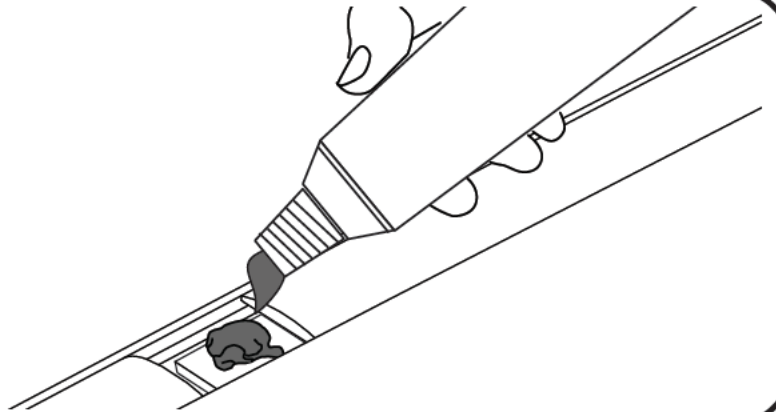
Using a stanley knife, carefully scrape away the paint seals to expose mounting holes.

**4****AFFIX FOAM ADHESIVE**

Carefully apply Foam Adhesive over all the exposed holes in roof channel, lining up holes in foam with the holes in roof channel. Apply with adhesive side to vehicle.

**5****APPLY LOCTITE**

Liberaly apply the supplied Loctite to the inside surface and on top of each hole **on one side of vehicle.**

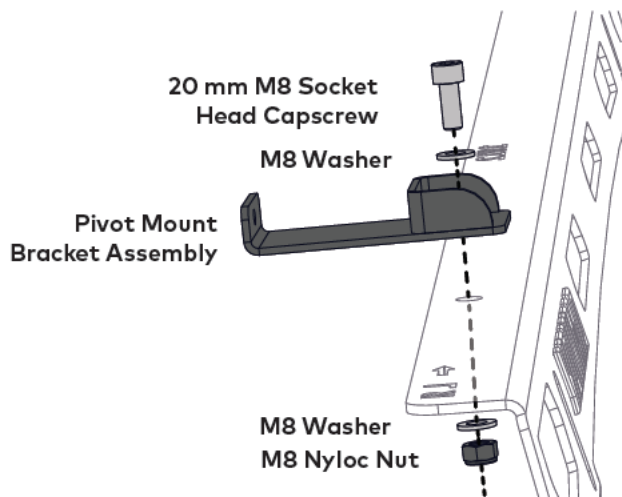
**!**

**PROCEED TO PAGE 7 AND CONTINUE FROM  
'MOUNTING RUGGEDLINE AND LockNLoad PLATFORM'**

# MOUNTING RUGGEDLINE AND LockNLoad PLATFORM

## 1 ASSEMBLE PIVOT BRACKET TO RUGGEDLINE

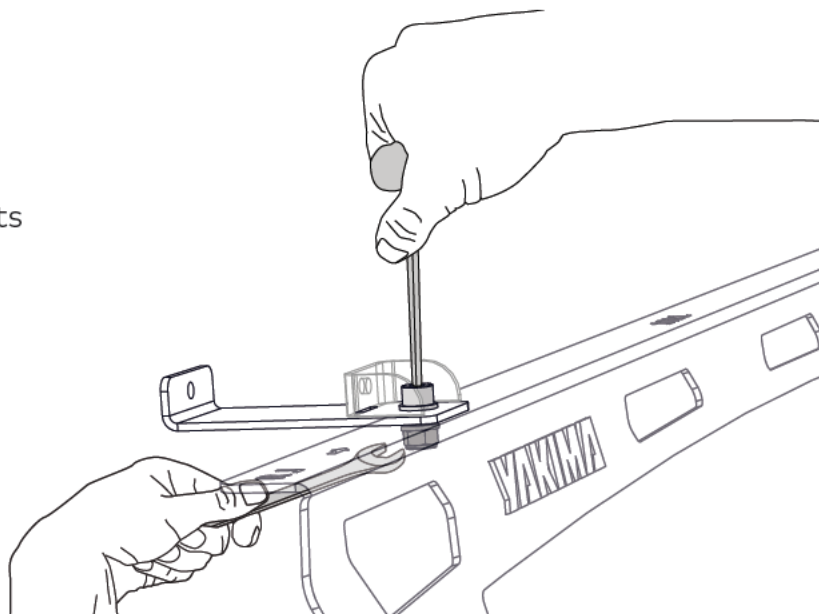
Assemble Pivot Bracket and M8 hardware as pictured. Complete this for the 2 mounting holes on top of the RuggedLine Spine.



## 2 SECURE PIVOT BRACKET ASSEMBLIES

Tighten all Capscrews with the provided 6 mm T Handle Ball End Allen Key, and all Nuts with a 13 mm Spanner or a suitable Torque Wrench.

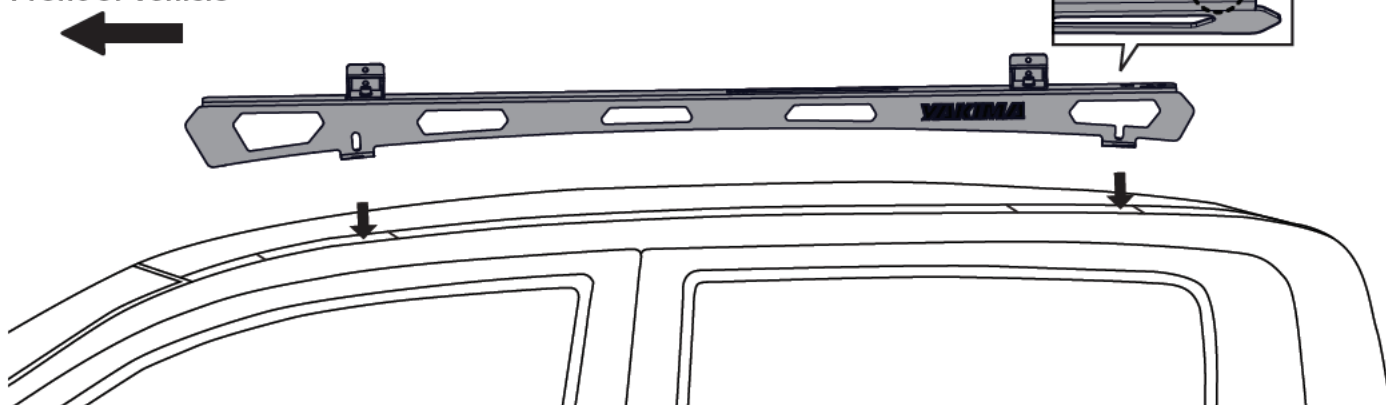
Ensure all Capscrews and Nuts are tightened to 7 Nm.



## 3 POSITION RUGGEDLINE ON VEHICLE ROOF

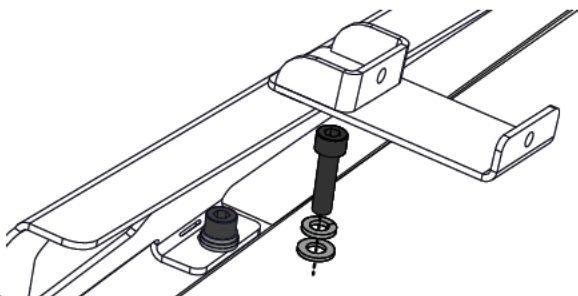
Referring to the left-right orientation on top of each Spine, carefully place one side of the RuggedLine onto vehicle roof as shown. Line up the mounting holes on the bottom tabs to those exposed on the roof. The tabs are to face in towards the vehicle.

Front of vehicle

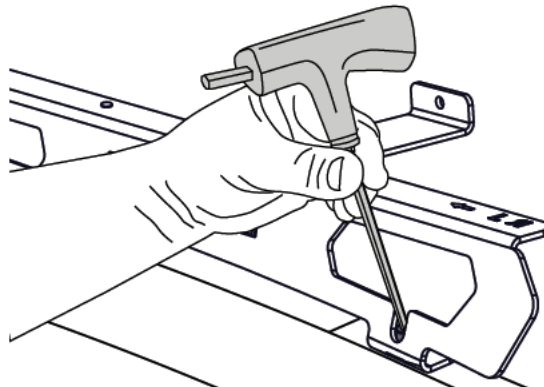


**4****ASSEMBLE RUGGEDLINE HARDWARE**

Assemble the 20 mm M8 Socket Head Capscrew, M8 Spring Washer and Washer as shown and place into mounting holes on bottom tabs of RuggedLine. Ensure hardware and holes align with the holes on roof.

**5****TIGHTEN RUGGEDLINE HARDWARE**

Using the 6 mm T Handle Ball End Allen Key, and avoiding damage to the powder coat, start to carefully secure the RuggedLine by tightening the M8 Socket Head Capscrews to 7 Nm into the mounting holes in roof.

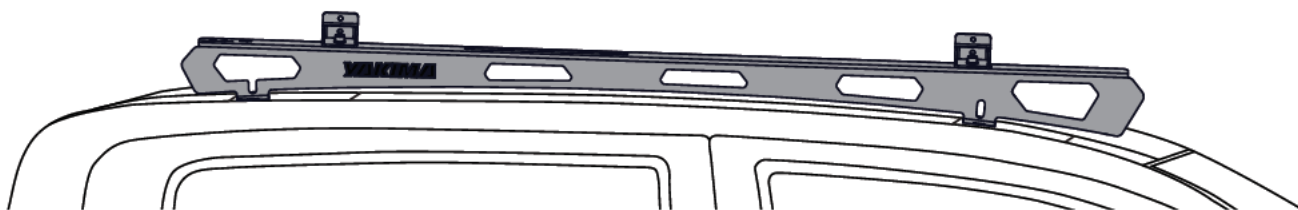
**6****REPEAT STEPS TO OPPOSITE SIDE**

For bare roof models, repeat steps 1a-5 on pages 4 & 6 for securing opposite side of RuggedLine Spine.

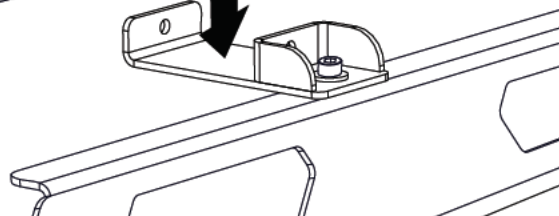
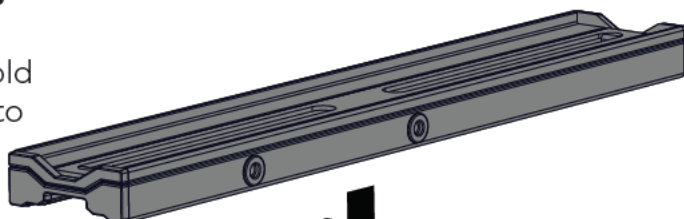
For the D-Max SX base model, repeat steps 1a-D on pages 4 & 5 and steps 4-5 on page 6 for securing opposite side of RuggedLine Spine.

For models with rails removed, repeat steps 4-5 on page 6 for securing opposite side of RuggedLine Spine.

Ensure both Spines are securely positioned on vehicle roof. Check each screw is secure before proceeding to install LockNLoad Platform to RuggedLine Spines.

**7****INSTALL PLATFORM PIVOT MOUNTS**

From the LockNLoad Platform kit (sold separately), position Pivot Mounts into each Pivot Bracket Assembly, lining up the rivnut holes on the Mounts with the holes on the brackets.

**!**

Where possible, always use the centre holes for attaching to Pivot Bracket. If extra clearance is needed due to Platform-to-roof fitment needs, the offset holes can be used.



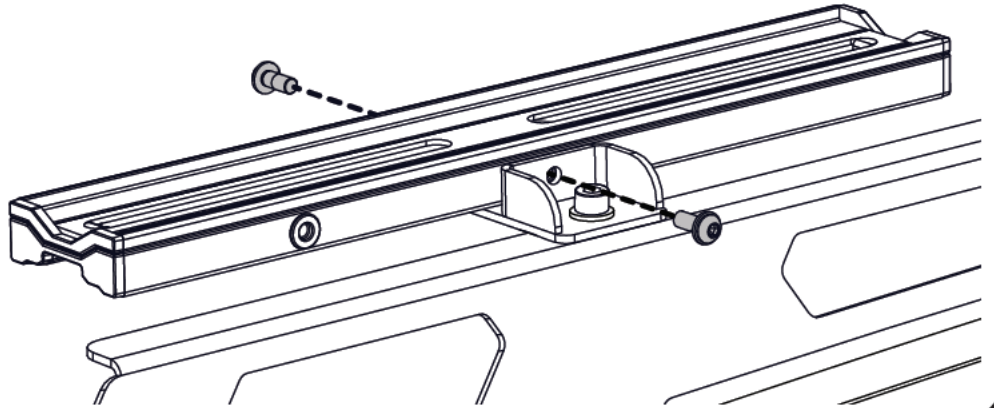
# 8

## SECURE PLATFORM PIVOT MOUNTS

Secure all Platform Pivot Mounts with 2x 16 mm M6 Capscrews with Washer from LockNLoad Platform kit as shown.

Tighten all Capscrews to 4 Nm with the provided 4 mm Ball End Allen Key or a suitable Torque Wrench.

**NOTE** - The Pivot Mount assembly will still have movement after securing which is intended.



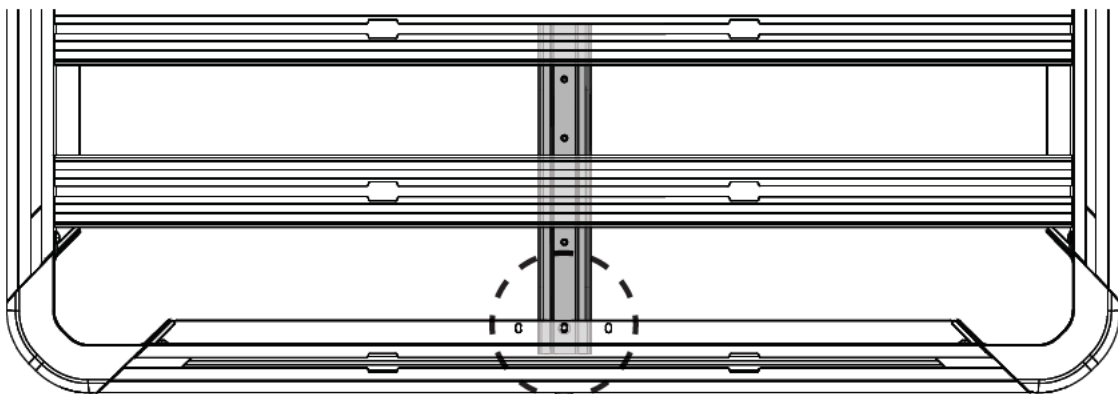
# !

**NOW SWITCH TO YOUR LockNLoad PLATFORM INSTRUCTIONS AND CONTINUE FROM THE 'VEHICLE MOUNTING INSTRUCTIONS' PAGE.**

# !

## PLATFORM SUPPORT MAY HAVE TO BE ADJUSTED TO AVOID AERIAL

The Platform Supports ideally should be fixed using the centre of the three holes. However, these can be offset left or right to prevent interference with an antenna in the centre of vehicle roof.



**YAKIMA**

[www.yakima.com.au](http://www.yakima.com.au)

[www.yakima.co.nz](http://www.yakima.co.nz)

[www.yakima.com](http://www.yakima.com)

[www.yakima.eu](http://www.yakima.eu)

**YAKIMA AUSTRALIA PTY LTD**

17 Hinkler Court  
Brendale, QLD 4500  
Australia  
1800 143 548

**YAKIMA PRODUCTS, INC.**

4101 Kruse Way  
Lake Oswego, OR  
97035-2541  
USA  
888 925 4621

ALL CONTENT SUBJECT TO YAKIMA AUSTRALIA PTY LTD COPYRIGHT © 2021