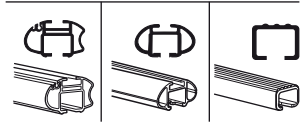
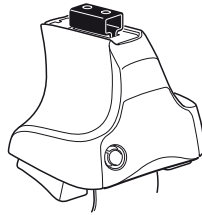


Kit 1017

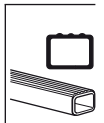
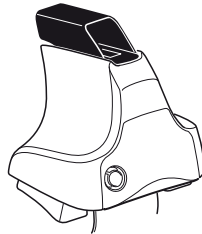
PEUGEOT 306, 3-dr Hatchback, 94-00

PEUGEOT 306, 5-dr Hatchback, 93-00

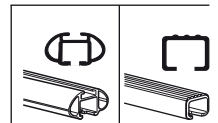
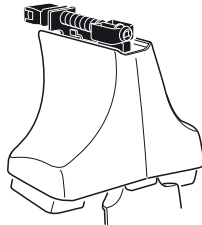
480R
754



480



750



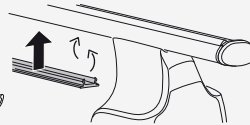
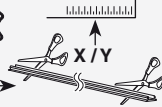
Kit



3



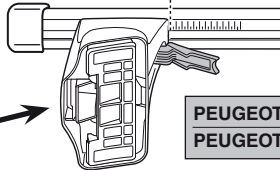
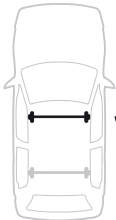
754



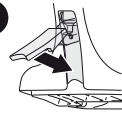
750



1

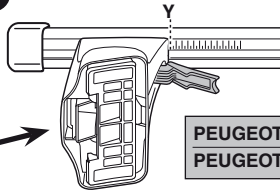


2

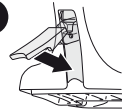


	X
PEUGEOT 306, 3-dr Hatchback, 94-00	23,5
PEUGEOT 306, 5-dr Hatchback, 93-00	23,5

1



2



	Y
PEUGEOT 306, 3-dr Hatchback, 94-00	29,5
PEUGEOT 306, 5-dr Hatchback, 93-00	21,5

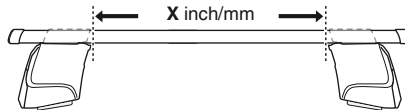
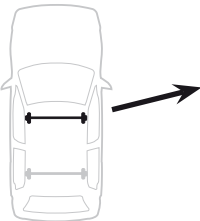


480R

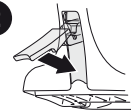


480

1

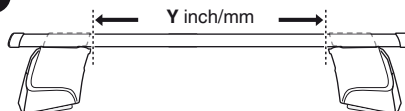
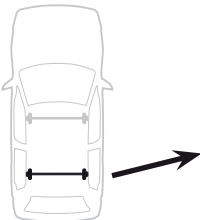


2

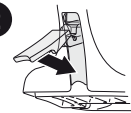


	X inch	X mm
PEUGEOT 306, 3-dr Hatchback, 94-00	34 7/8"	886 mm
PEUGEOT 306, 5-dr Hatchback, 93-00	34 7/8"	886 mm

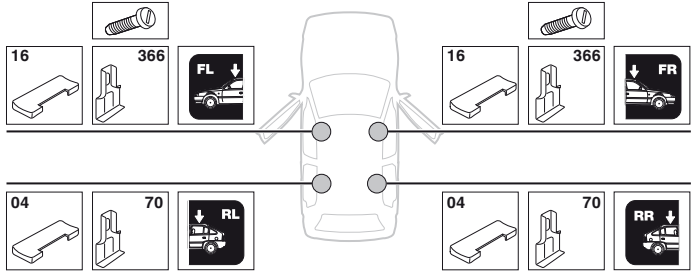
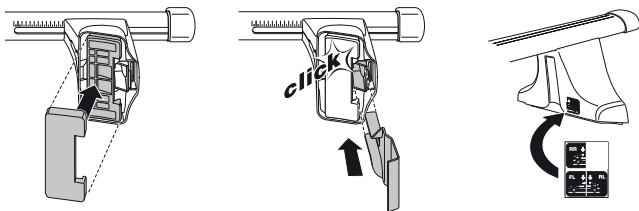
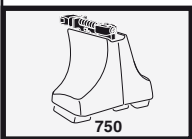
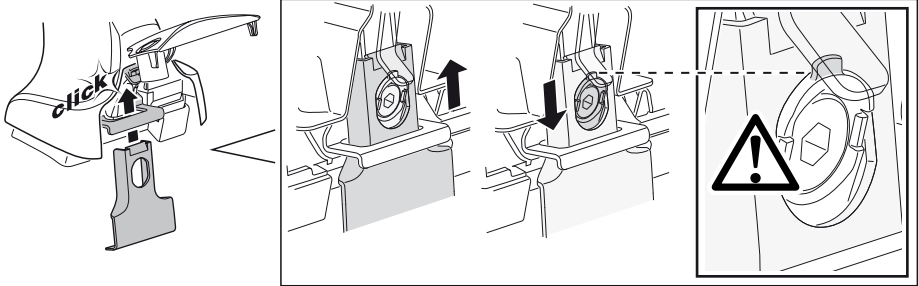
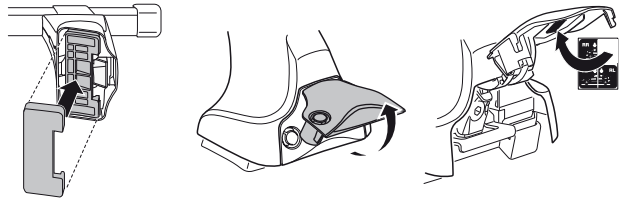
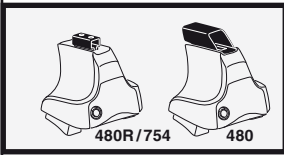
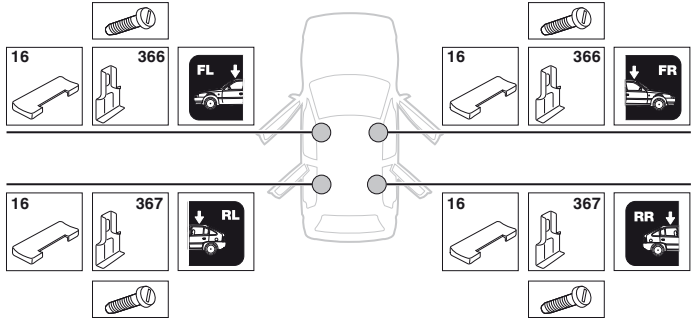
1



2



	Y inch	Y mm
PEUGEOT 306, 3-dr Hatchback, 94-00	37 1/8"	946 mm
PEUGEOT 306, 5-dr Hatchback, 93-00	34 1/8"	866 mm

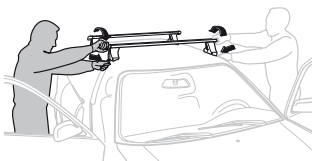
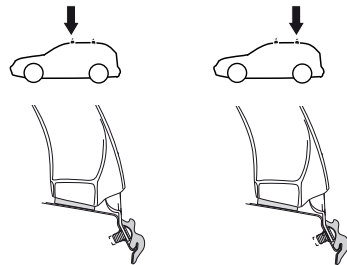
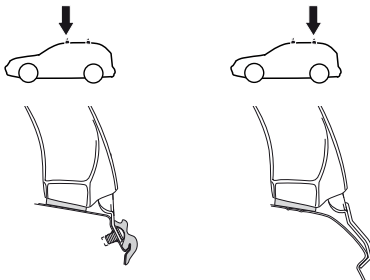
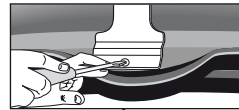
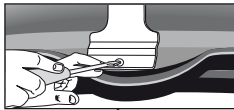
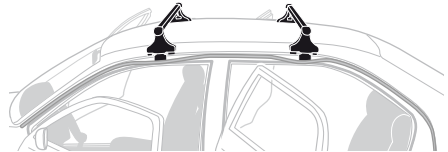
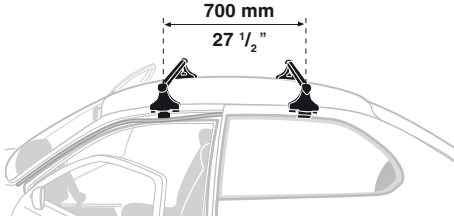
4**PEUGEOT 306, 3-dr Hatchback, 94-00****PEUGEOT 306, 5-dr Hatchback, 93-00**

5



PEUGEOT 306, 3-dr Hatchback, 94-00

PEUGEOT 306, 5-dr Hatchback, 93-00



- GB/US** Tighten alternately
- D** Die Schrauben abwechselnd anziehen
- F** Serrer alternativement chaque côté
- NL** Afwisselend aan de linker- en de rechterkant aandraaien
- I** Alternare il serraggio delle viti
- E** Apretar alternativamente
- PT** Aperte alternadamente
- S** Dra åt växelvis
- FIN** Kierrä vuorotellen
- EST** Pinguldage vaheldumisi
- LAT** Pievelciēt pamišus
- LIT** Užsukinėkite pakaitomis
- PL** Śruby dokręcaj naprzemiennie
- RU** Затягивайте попеременно

- CZ** Pokrétla bagazníka dokręcaj dokręcaj naprzemiennie.
- SK** Dofahujte striedavo
- SLO** Privijajte izmenično.
- HR** Naizmjenično zategnite
- HU** Egy mástól függetlenül szorítandó
- GR** Σφιγίστε εναλλάξ
- TR** Dönüşümlü sıkın
- 中文** 交替拧紧
- 한국어** 번갈아 가며 조이십시오.
- 日本語** 交互に締め付けてください。
- ไทย** ชั้้นในแบบสลับ

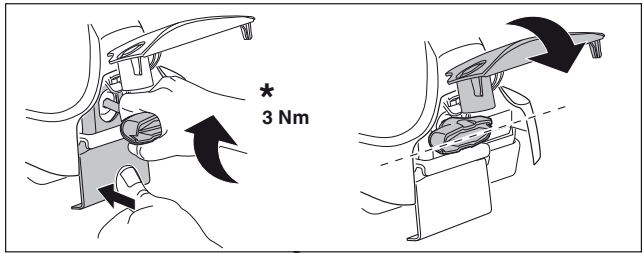
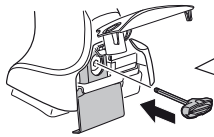
6



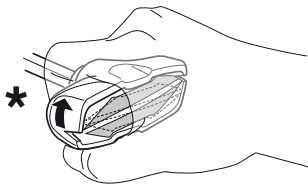
480R/754



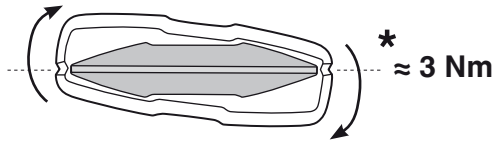
480



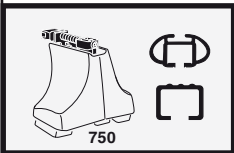
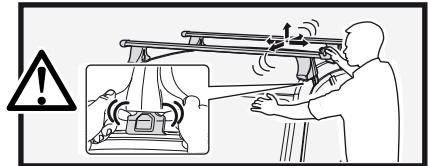
*
3 Nm



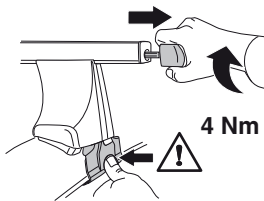
*



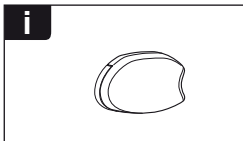
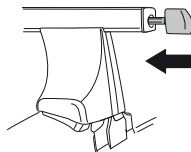
*
≈ 3 Nm



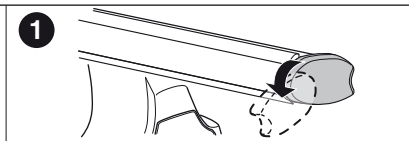
750



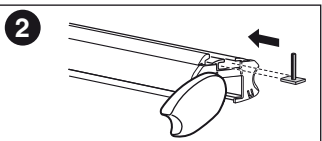
4 Nm



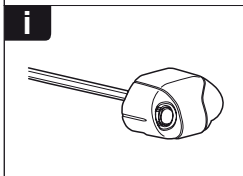
i



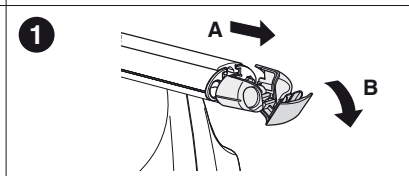
1



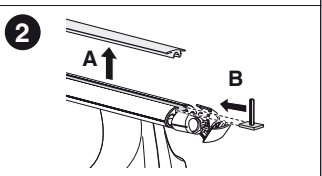
2



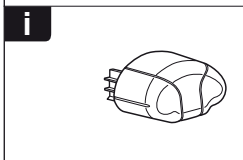
i



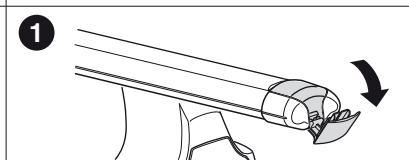
1



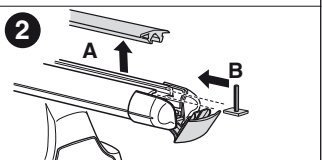
2



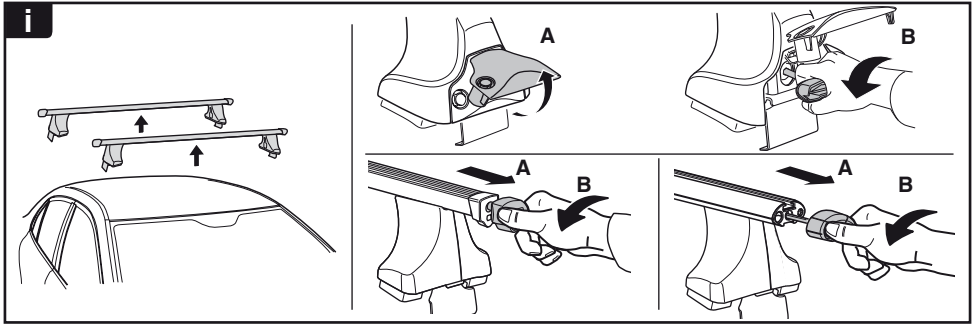
i



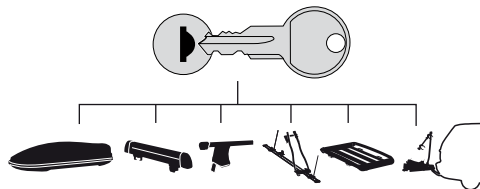
1



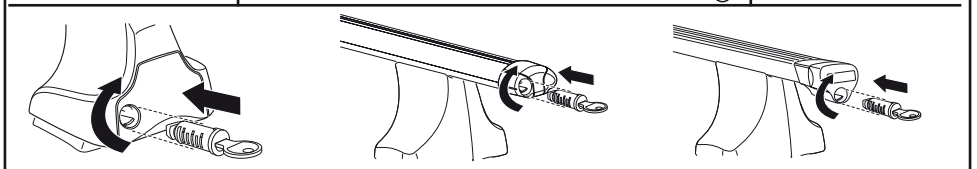
2



THULE
SWEDEN
**ONE
KEY
SYSTEM**



- 544 (x4)
- 596 (x6)
- 588 (x8)
- NA 510 (x10)
- EUR 452 (x12)
- ASIA



WW ▶ Thule Sweden AB, Box 69, 330 33 Hillerstorp, SWEDEN
NA ▶ Thule Inc., 42 Silvermine Road, Seymour, Connecticut 06483, USA

info@thule.com
customer.service@thule.com

www.thule.com