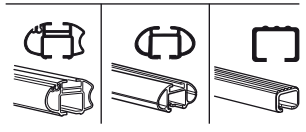
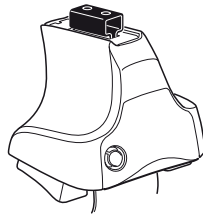


Kit 1012

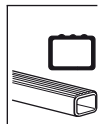
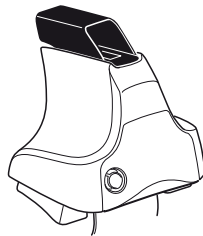
CITROËN ZX, 3-dr Hatchback, 93-98

CITROËN ZX, 5-dr Hatchback, 91-98

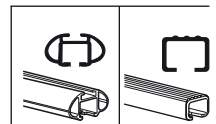
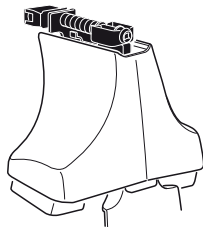
480R
754



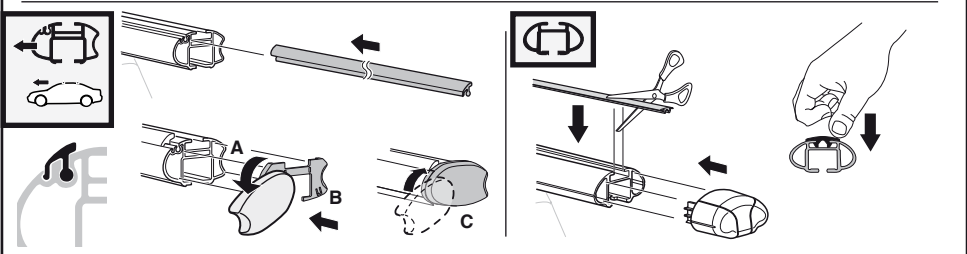
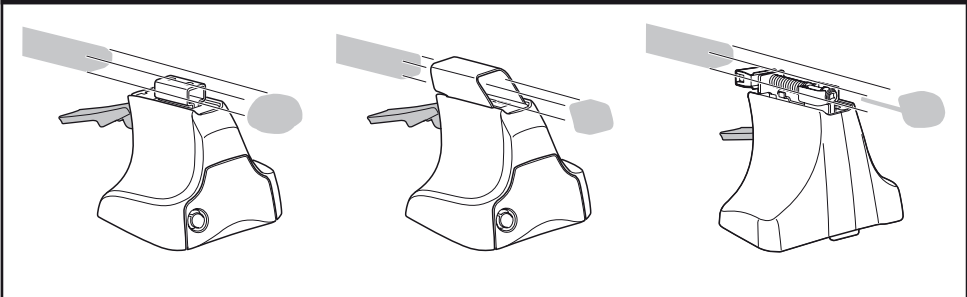
480



750



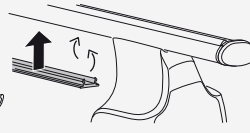
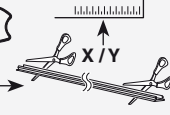
Kit



3



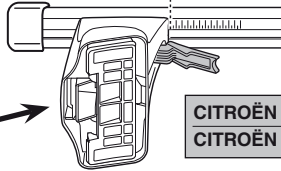
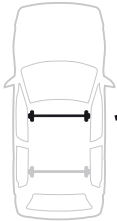
754



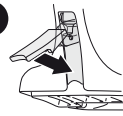
750



1

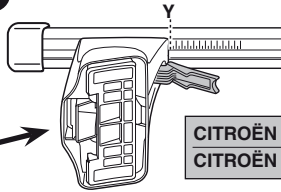
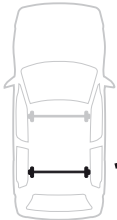


2

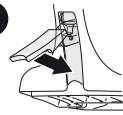


	X
CITROËN ZX, 3-dr Hatchback, 93-98	29,5
CITROËN ZX, 5-dr Hatchback, 91-98	30

1



2



	Y
CITROËN ZX, 3-dr Hatchback, 93-98	28
CITROËN ZX, 5-dr Hatchback, 91-98	28,5

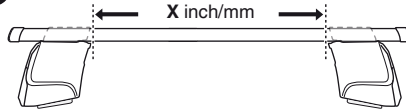


480R

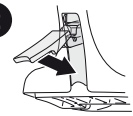


480

1

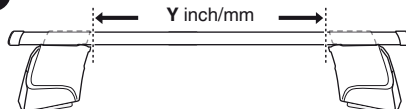


2

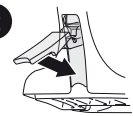


	X inch	X mm
CITROËN ZX, 3-dr Hatchback, 93-98	37 1/4"	946 mm
CITROËN ZX, 5-dr Hatchback, 91-98	37 1/2"	951 mm

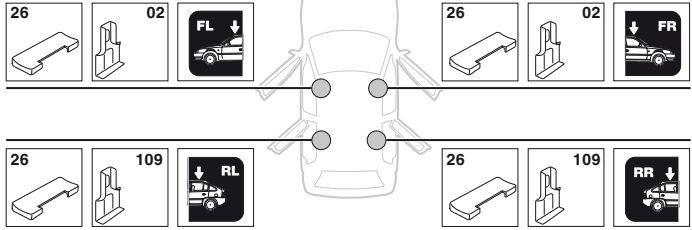
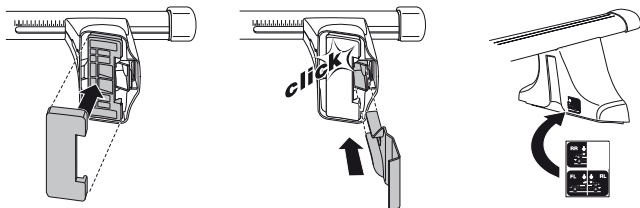
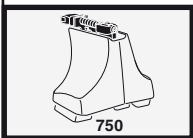
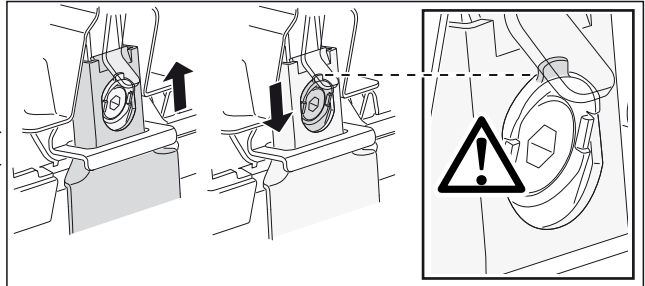
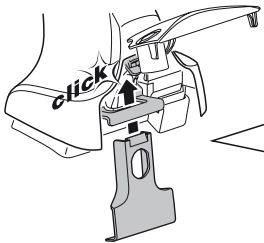
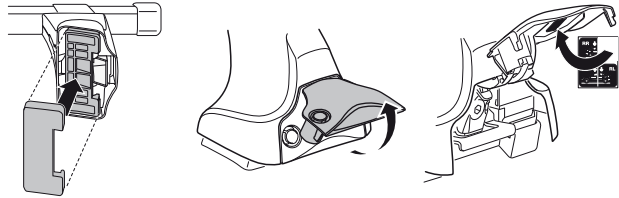
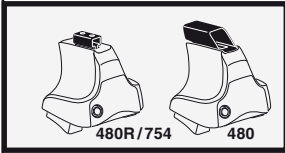
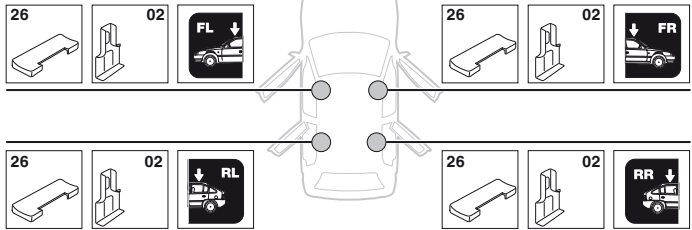
1



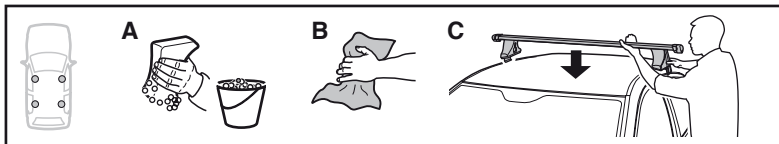
2



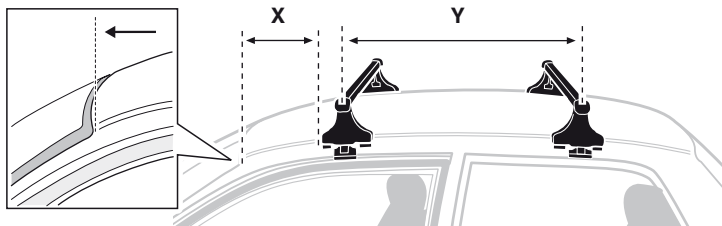
	Y inch	Y mm
CITROËN ZX, 3-dr Hatchback, 93-98	36 5/8"	931 mm
CITROËN ZX, 5-dr Hatchback, 91-98	36 7/8"	936 mm

4**CITROËN ZX, 3-dr Hatchback, 93-98****CITROËN ZX, 5-dr Hatchback, 91-98**

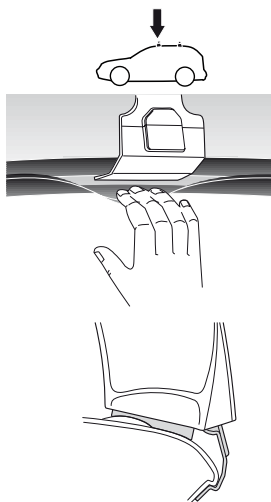
5



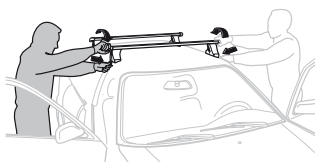
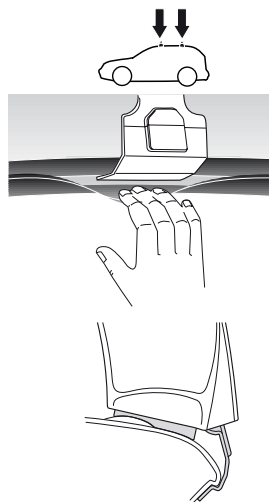
	X mm	Y mm	X inch	Y inch
CITROËN ZX, 3-dr Hatchback, 93-98	300 mm	700 mm	11 3/4"	27 1/2"
CITROËN ZX, 5-dr Hatchback, 91-98	180 mm	700 mm	7 1/8"	27 1/2"



CITROËN ZX, 3-dr Hatchback, 93-98



CITROËN ZX, 5-dr Hatchback, 91-98



- GB/US Tighten alternately
- D Die Schrauben abwechselnd anziehen
- F Serrer alternativement chaque côté
- NL Afwisselend aan de linker- en de rechterkant aandraaien
- I Alternare il serraggio delle viti
- E Apretar alternativamente
- PT Aperte alternadamente
- S Dra åt växelvis
- FIN Kierrä vuorotellen
- EST Pinguldage vaheldumisi
- LAT Pievelciēt pamīšus
- LIT Užsukinėkite pakaitomis
- PL Śruby dokręcaj naprzemiennie
- RU Затягивайте попеременно

- CZ Pokręťta bagażnika dokręcaj dokręcaj naprzemiennie.
- SK Dotahujte striedavo
- SLO Privijajte izmenično.
- HR Naizmjenično zategnite
- HU Egymástól fűggetlenül szorítandó
- GR Σφιγίγετε εναλλάξ
- TR Dönüşümlü sıkın
- 中文 交替拧紧
- 한국어 번갈아 가며 조이십시오.
- 日本語 交互に締め付けてください。
- ไทย ชับในแบบสลับ

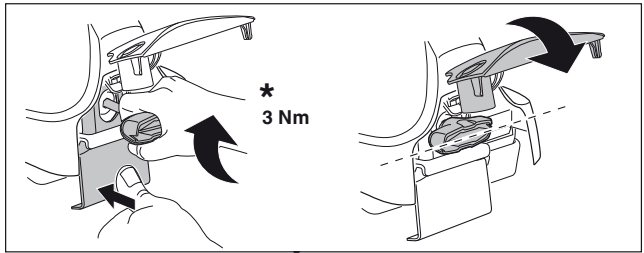
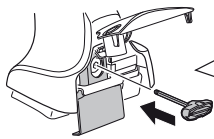
6



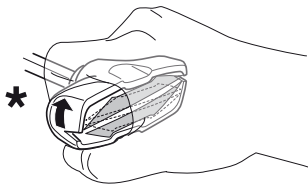
480R/754



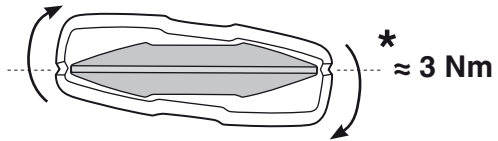
480



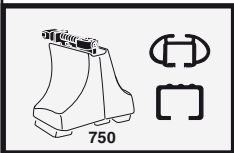
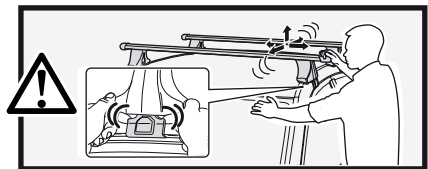
*
3 Nm



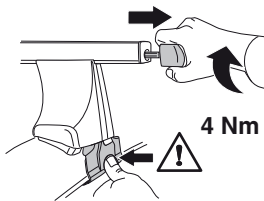
*



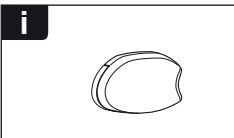
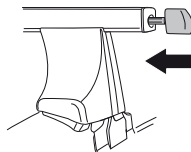
*
≈ 3 Nm



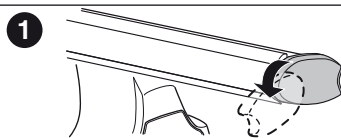
750



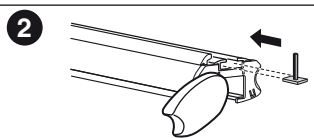
4 Nm



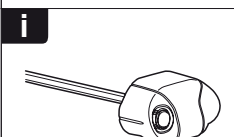
i



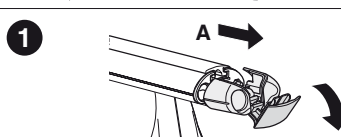
1



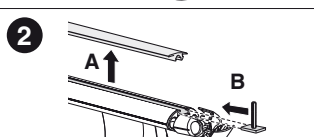
2



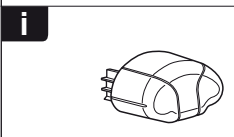
i



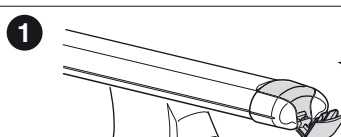
1



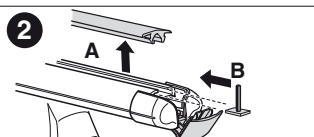
2



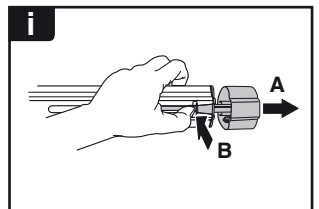
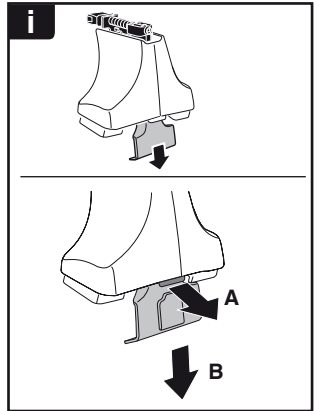
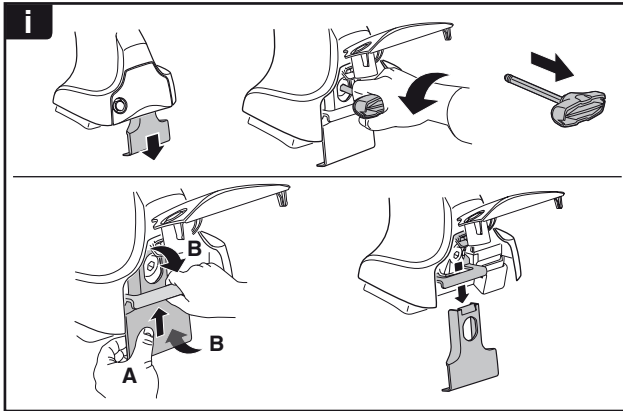
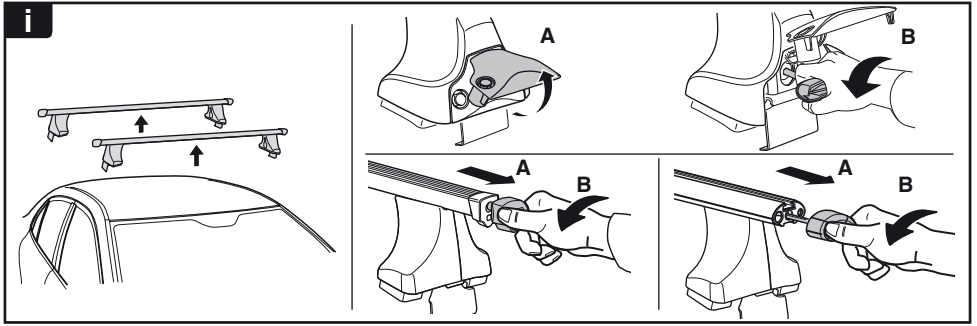
i



1



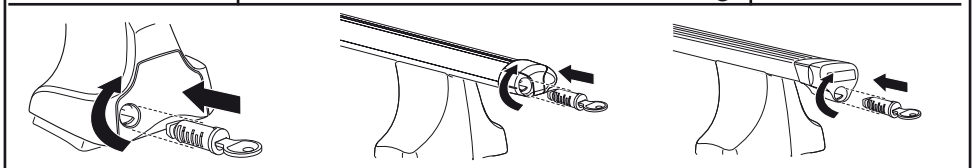
2



THULE
SWEDEN
**ONE
KEY
SYSTEM**



- 544 (x4)
- 596 (x6)
- 588 (x8)
- NA 510 (x10)
- EUR 452 (x12)
- ASIA



WW ▶ Thule Sweden AB, Box 69, 330 33 Hillerstorp, SWEDEN
NA ▶ Thule Inc., 42 Silvermine Road, Seymour, Connecticut 06483, USA

info@thule.com
customer.service@thule.com

www.thule.com