

HAYMAN REESE
PART No: 03237RW
TOYOTA LANDCRUISER 79 XBAR
INSTALLATION INSTRUCTIONS

PLEASE ENSURE THAT INSTRUCTIONS ARE UNDERSTOOD PRIOR TO FITMENT
PLACE THESE INSTRUCTIONS IN THE VEHICLE'S GLOVEBOX AFTER INSTALLATION IS COMPLETED



Installation Time: Approx 60 Mins

Towbar Installation Instructions
TOYOTA LANDCRUISER 79 XBAR

Part Number 03237RW

Towbar capacity:

Max Towing Braked	3500kg
Max Towing Unbraked	750kg
Max Static Ball Load	350kg

RECOVERY RATING:

CENTRE RECOVERY HOOK

CENTRE RECOVERY POINT LOADING MUST NOT EXCEED 8000kg.
DESIGNED FOR USE WITH A SNATCH STRAP NOT EXCEEDING 8000kg
MBS (MINIMUM BREAKING STRENGTH)

8000kg



SIDE RECOVERY HOOK (SINGLE)

SIDE RECOVERY POINT LOADING MUST NOT EXCEED 4000kg MBS
(MINIMUM BREAKING STRENGTH)

4000kg



WARNING: High torque requirements needed in installation. Correct requirements must be followed to ensure trouble free installation.

Hayman Reese (Cequent)
PO Box 4050, Dandenong South VIC 3164
Phone 1800 812 017 Email info@haymanreese.com.au

x-bar.com.au

XBAR
BY HAYMAN REESE

HAYMAN REESE
PART No: 03237RW
TOYOTA LANDCRUISER 79 XBAR
INSTALLATION INSTRUCTIONS

PLEASE ENSURE THAT INSTRUCTIONS ARE UNDERSTOOD PRIOR TO FITMENT
PLACE THESE INSTRUCTIONS IN THE VEHICLE'S GLOVEBOX AFTER INSTALLATION IS COMPLETED

Warning:

1. Do not, drill, cut, weld or otherwise modify the towbar.
2. If you are using electric welding on a motor vehicle, **always** check that the vehicle is not equipped with electronic engine or instrument management equipment. Failure to do so could **destroy** any on board computers. If in doubt, check with the vehicle's manufacturer.
3. If TBM is used in inverted position tow ball may make contact with rear tailgate when lowered, which could cause damage.

General:

1. Ensure all hardware items have been included refer to assembly diagram.
2. It is recommended that the instructions are read through and completely understood before making any attempt to fit this product.
3. Be wary of any changes to vehicle designs or other accessories that may conflict with the installation of this product.
4. Before drilling ensure that the area is clear of fuel, electrical & other components.
5. All holes drilled into the body panels shall have all burrs & swarf removed then coated with a suitable rust preventative paint.
6. The high tensile fasteners supplied with this product were used to achieve the specified rating. If replacement is required ensure that fasteners of the same rating & quality are used. Contact an authorised **Hayman Reese** dealer if further information is required.
7. Ensure that all hardware is fastened to torque list below check fasteners on regular basis.
8. Towbar load rating sticker provided with this product shall be conspicuously located on inside rear end of the driver's door. **(See diagram below).**
9. Hayman Reese recommends that you check your tow ball to ensure that it complies with the Australian standards **AS 4177.2**.
10. **PLEASE NOTE:** It is advised to remove your LUG or TBM when not actually towing so as to produce a clear view of the vehicles registration plate if obscured, and to also provide maximum available departure angle.

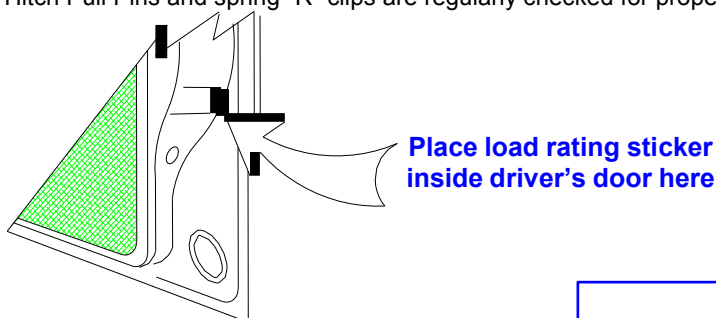
Tow bar Maintenance and Care.

Hayman Reese recommends that bolt torque's, as listed below, are routinely and regularly inspected and checked for correct tension. Replace any worn or defective parts.

We recommended to remove Tow Ball Mounts (TBM's, tongues or lugs) when not being used for any considerable length of time.

So as to avoid injury, when not towing it is suggested that the tongue, Pull Pin and R-clip are removed then stored in a safe, clean and dry place, away from excessive moisture.

Hitch Pull Pins and spring "R" clips are regularly checked for proper installation. Replace any worn or defective parts.



FOR TOWING PURPOSES ONLY
For towing capacity details please refer to vehicle owner's manual or to the manufacturer. Overloading can void your warranties.

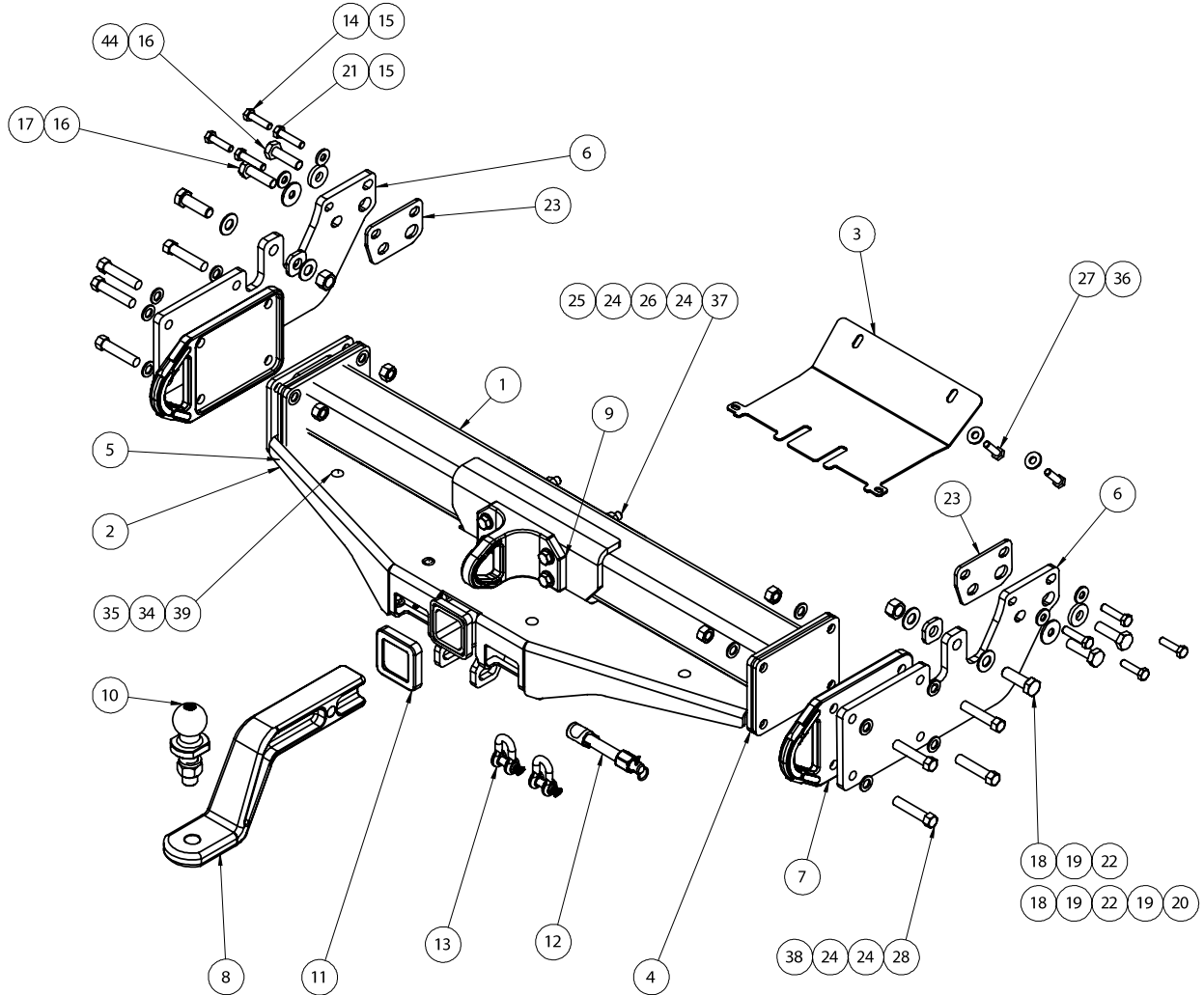
Hayman Reese (Cequent)
PO Box 4050, Dandenong South VIC 3164
Phone 1800 812 017 Email info@haymanreese.com.au

x-bar.com.au

XBAR
BY HAYMAN REESE

HAYMAN REESE
PART No: 03237RW
TOYOTA LANDCRUISER 79 XBAR
INSTALLATION INSTRUCTIONS

PLEASE ENSURE THAT INSTRUCTIONS ARE UNDERSTOOD PRIOR TO FITMENT
PLACE THESE INSTRUCTIONS IN THE VEHICLE'S GLOVEBOX AFTER INSTALLATION IS COMPLETED



Not all items shown in assembly drawing for clarity

Hayman Reese (Cequent)
PO Box 4050, Dandenong South VIC 3164
Phone 1800 812 017 Email info@haymanreese.com.au

x-bar.com.au



HAYMAN REESE
PART No: 03237RW
TOYOTA LANDCRUISER 79 XBAR
INSTALLATION INSTRUCTIONS

PLEASE ENSURE THAT INSTRUCTIONS ARE UNDERSTOOD PRIOR TO FITMENT
 PLACE THESE INSTRUCTIONS IN THE VEHICLE'S GLOVEBOX AFTER INSTALLATION IS COMPLETED

ITEM NO.	DESCRIPTION	QTY.
1	XBAR WELDED ASSEMBLY	1
2	BOLT ON PLATE - MODEL C	1
3	BASH PLATE	1
4	8MM SPACER PLATE	2
5	5MM SPACER PLATE	2
6	TOYOTA LANDCRUISER 70 SIDE ARM	2
7	FORGED SIDE RECOVERY PLATES	2
8	3.5t FORGED TBM EXTENDED DROP	1
9	FORGED CENTRE RECOVERY MOUNT	1
10	HR TOWBALL	1
11	HITCH BOX COLLAR COVER	1
12	ANTI-RATTLE PULL PIN ASSY GOLD	1
13	10mm "D" SHACKLE	2
14	BOLT HEX HD M10 X 40 X 1.25P G10.9	4
15	WASHER PLAIN M10 X 25 X 3	4
16	SET SCREW HEX HD M14-1.5x50mm GR10.9	4
17	WASHER FLAT M12 X 37 X 3mm	2
18	M16x1.5Px50 Bolt	2
19	FLAT WASHER M16 x 33.5 x 2.5 Z/P	4
20	HEXAGONAL NUT M16 X 1.5	2
21	SET SCREW HEX HD M10 X 45 X 1.5P	4
22	REAR SPACER PLATE	2
23	FORWARD SPACER PLATE	2
24	WSHR FT M12 x 28 x 3mm BLK XYLAN	24
25	M12x1.75 HEX NUT PC8	4
26	SPACER TUBE 90MM 16X1.6	4
27	BOLT M10-1.25x35mm Gr8.8 BLK XYLAN	2
28	SCR-HEX-ISO4014-10.9-WS21-M14X65	8
29	SCREW PAN HD M3 X 20 X 0.7P G4.6	2
30	NUT NYLON LOCK HEX HD M4X0.7P G8	2
31	SCREW PAN HD M4 X 16 X 0.7P G4.6	2
32	NUT NYLON LOCK HEX HD M3X0.7P G8	2
33	SET SCREW M8 - 1.25 x 25mm GR 8.8 Z/P	2
34	WASHER PLAIN M8 X 22 X 3	8
35	M8 - 1.25 NUT	6
36	WSHR FT M10 x 25.4 x 3mm BLK XYLAN	2
37	SCR-HEX-ISO4014-10.9-WS18-M12X150	4
38	NUT-HEX-ISO4032-10-WS21-M14	8
39	BLT-NUT-AS1390/1112-4.6/5-(A2K)-M8X20	4
40	XBAR DECAL STICKER	1
41	ACRYLIC COMPLIANCE LABEL	1
42	ACRYLIC LOAD RATING LABEL	1
43	WIRING LOOM	1
44	SPACER	2
45	XBAR TORQUE RATING WARNING LABEL	1

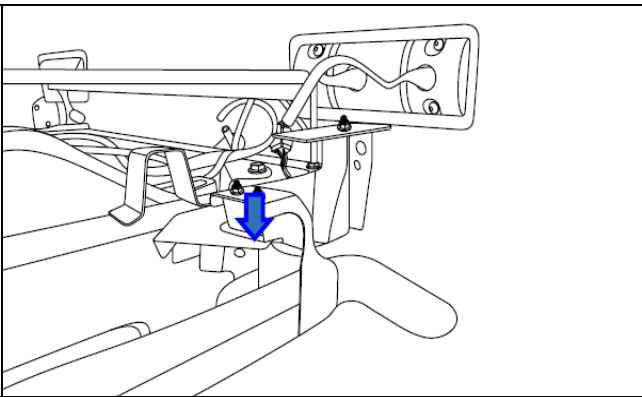
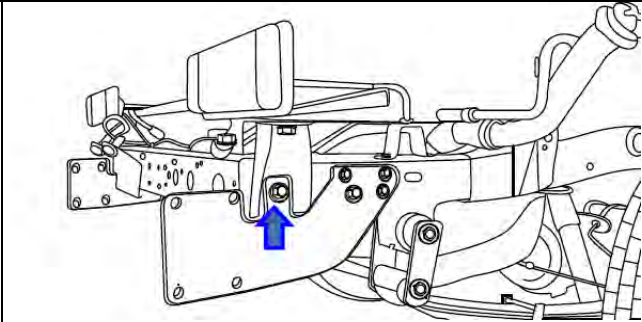
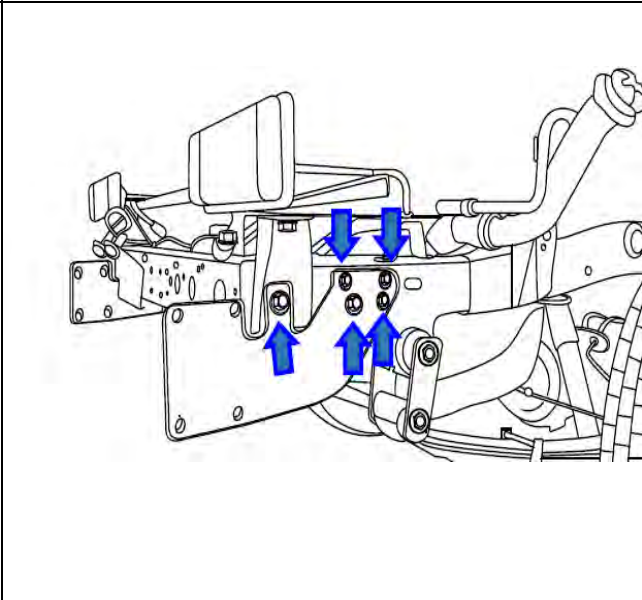
Hayman Reese (Cequent)
 PO Box 4050, Dandenong South VIC 3164
 Phone 1800 812 017 Email info@haymanreese.com.au

x-bar.com.au



HAYMAN REESE
PART No: 03237RW
TOYOTA LANDCRUISER 79 XBAR
INSTALLATION INSTRUCTIONS

PLEASE ENSURE THAT INSTRUCTIONS ARE UNDERSTOOD PRIOR TO FITMENT
PLACE THESE INSTRUCTIONS IN THE VEHICLE'S GLOVEBOX AFTER INSTALLATION IS COMPLETED

<p>1. Remove and retain 2 x screws securing rear section of exhaust to exhaust mount.</p> <p>This is to allow for greater tool access for installation of towbar.</p>	
<p>FOR DUAL CAB MODEL:</p> <p>2. Using the side arm as a template for the rear chassis mount, mark off and drill a Ø16.5mm hole in the chassis.</p> <p>3. Spray with rust inhibitor.</p> <p>Repeat steps 2-3 for opposite side of vehicle.</p>	
<p>4. Loosely secure side-arm and forward spacer plate to upper holes on outside face of chassis rail using 2 x M10 x 1.25 bolts (Single Cab) or 2 x M10 x 1.5 (Dual Cab), complete with 1 x flat washer per bolt.</p> <p>5. Loosely secure side arm and forward spacer plate to lower holes on outside face of chassis rail using 2 x M14 x 1.5P bolts, complete with 1 x circular spacer for forward bolt and 1 x flat washer for rear bolt.</p> <p>6. Loosely secure side arm and rear spacer plate to tray mounting point using 1 x M16 screw, complete with 1 x flat washer. For Dual Cab, complete the fitment with the addition of 1 x flat washer and 1 x M16 nut.</p> <p>Repeat Steps 4-6 for opposite side of vehicle.</p>	

Hayman Reese (Cequent)
PO Box 4050, Dandenong South VIC 3164
Phone 1800 812 017 Email info@haymanreese.com.au

x-bar.com.au



HAYMAN REESE
PART No: 03237RW TOYOTA
LANDCRUISER 79 XBAR

INSTALLATION INSTRUCTIONS

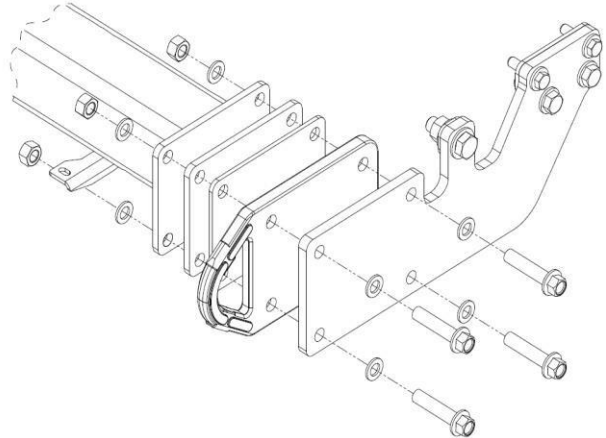
PLEASE ENSURE THAT INSTRUCTIONS ARE UNDERSTOOD PRIOR TO FITMENT
PLACE THESE INSTRUCTIONS IN THE VEHICLE'S GLOVEBOX AFTER INSTALLATION IS COMPLETED

7. Complete Step C prior to attaching towbar to side arms.

Using two people, lift towbar up to side arms ensuring to sandwich red recovery side plate between side arms and cross tube, with 8mm and 5mm spacer plate in recess of red plate.

Note: Red recovery side plates must have recess facing inwards.

Loosely secure towbar to side arms with 4 x M14 x 2.0P bolts (black coated) complete with 2 x washers and 1 x nut per bolt.



8. Refer to sequence A, B, C, and D over page for final assembly instructions.

IMPORTANT:

- Ensure all bolts are secured to correct torques using a calibrated torque wrench.
- Tighten side arms to chassis rail first in an even pattern/sequence.
- Tighten centre section to side arms in an even pattern.
- Tighten all other fasteners.

TORQUE SPECIFICATION:

- | | |
|----------------------------------|-----------------------------|
| • M8: 22 N.m | • M14x1.5P: 196 N.m |
| • M10x1.25P G8.8 (black): 48 N.m | • M14x2.0P (black): 155 N.m |
| • M10x1.25P G10.9: 68 N.m | • M16: 240 N.m |
| • M10x1.5P G10.9: 62 N.m | |
| • M12: 140 N.m | |

WARNING: Correct tension for M14 centre section to side arms **MUST** be followed.

Hayman Reese (Cequent)
PO Box 4050, Dandenong South VIC 3164
Phone 1800 812 017 Email info@haymanreese.com.au

x-bar.com.au



HAYMAN REESE

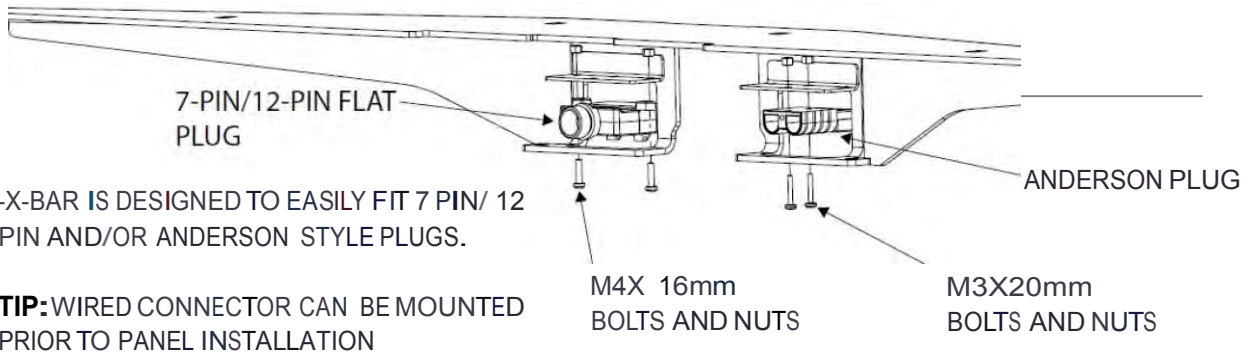
PART No: 03237RW TOYOTA

LANDCRUISER 79 XBAR

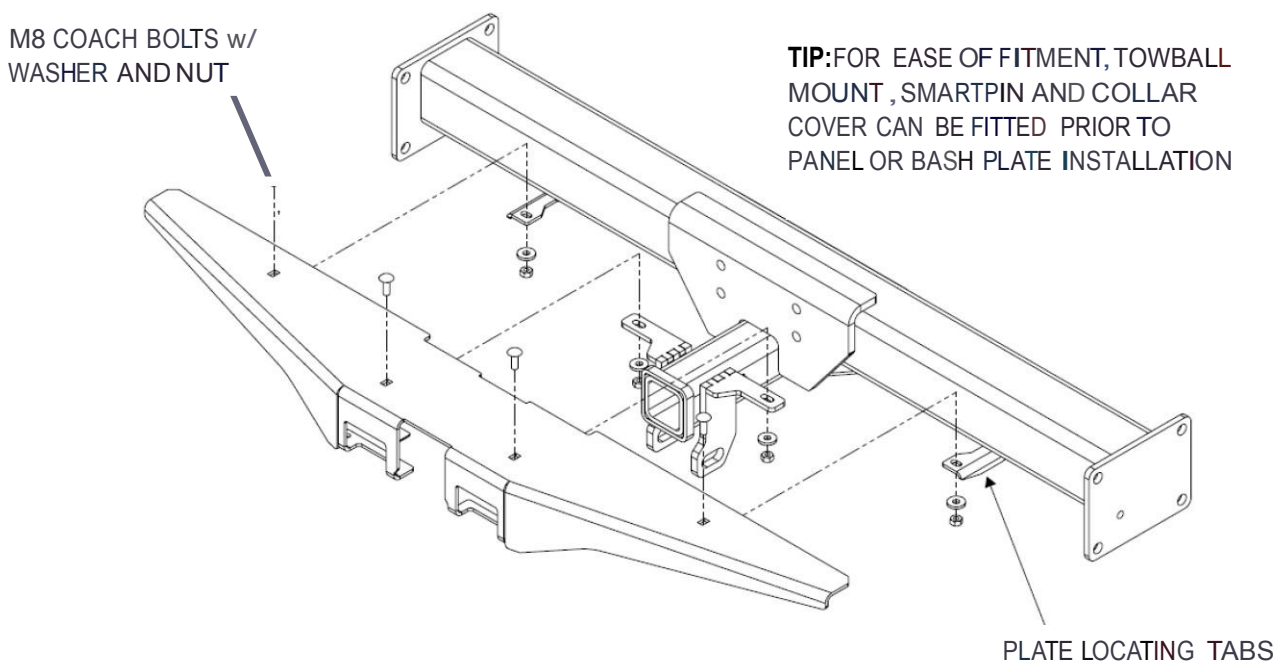
INSTALLATION INSTRUCTIONS

PLEASE ENSURE THAT INSTRUCTIONS ARE UNDERSTOOD PRIOR TO FITMENT
PLACE THESE INSTRUCTIONS IN THE VEHICLE'S GLOVEBOX AFTER INSTALLATION IS COMPLETED

A. FIT PLUGS TO PLUG BRACKETS



B. BOLT COVER PLATE TO TOWBAR



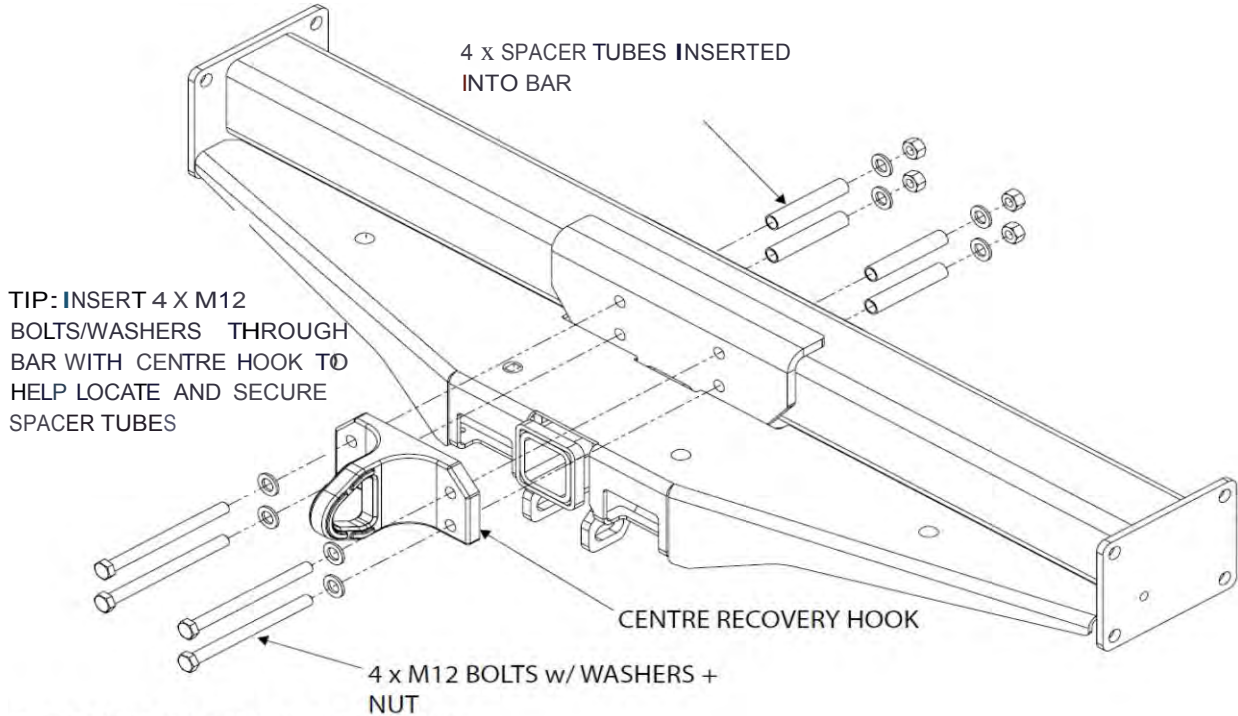
Hayman Reese (Cequent)
PO Box 4050, Dandenong South VIC 3164
Phone 1800 812 017 Email info@haymanreese.com.au

x-bar.com.au

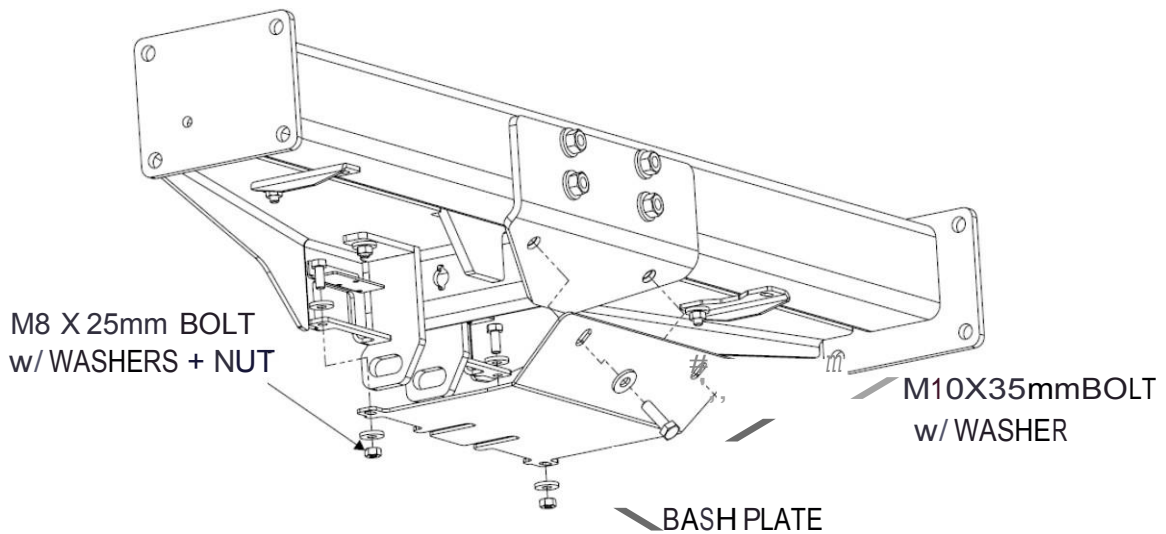
XBAR
BY HAYMAN REESE

HAYMAN REESE PART No: 03237RW TOYOTA LANDCRUISER 79 XBAR INSTALLATION INSTRUCTIONS

PLEASE ENSURE THAT INSTRUCTIONS ARE UNDERSTOOD PRIOR TO FITMENT
PLACE THESE INSTRUCTIONS IN THE VEHICLE'S GLOVEBOX AFTER INSTALLATION IS COMPLETED
C. BOLT CENTRE RECOVERY HOOK TO TOWBAR



D. BOLT BASH PLATE TO TOWBAR



Hayman Reese (Cequent)
PO Box 4050, Dandenong South VIC 3164
Phone 1800 812 017 Email info@haymanreese.com.au

x-bar.com.au

XBAR
BY HAYMAN REESE

HAYMAN REESE
PART No: 100038-WL
TOYOTA LANDCRUISER SERIES

INSTALLATION INSTRUCTIONS

PLEASE ENSURE THAT INSTRUCTIONS ARE UNDERSTOOD PRIOR TO FITMENT

Wiring Loom Installation Instructions

TOYOTA LANDCRUISER 70 SERIES
(JANUARY 2000 - ONWARDS)
Part No: 100038-WL

Tail Harness Length Required: 1200mm
Tail Harness Length Required: 400mm (For MY19 onwards)
RPA Disable Switch Part No: 04848 (If Fitted)

**For MY19 and on, the breakout connector will be located in
the centre, between the chassis rails.**

Wiring Loom Installation Time: Approx. 30 minutes

Issue Date 06-06-19

Page 1

Part No: 100038-WL

Hayman Reese (Cequent)
PO Box 4050, Dandenong South VIC 3164
Phone 1800 812 017 Email info@haymanreese.com.au



www.haymanreese.com.au

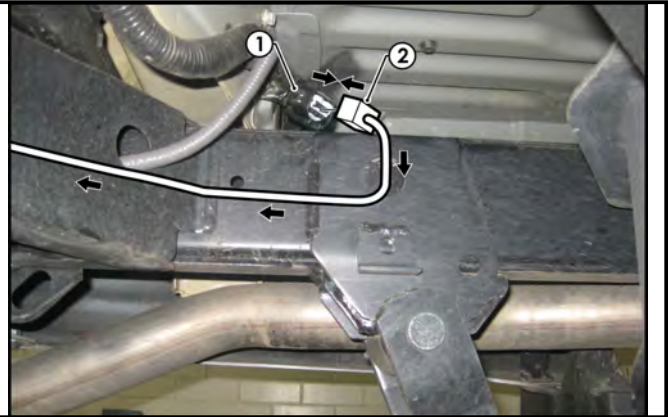
HAYMAN REESE
PART No: 100038-WL
TOYOTA LANDCRUISER SERIES

INSTALLATION INSTRUCTIONS

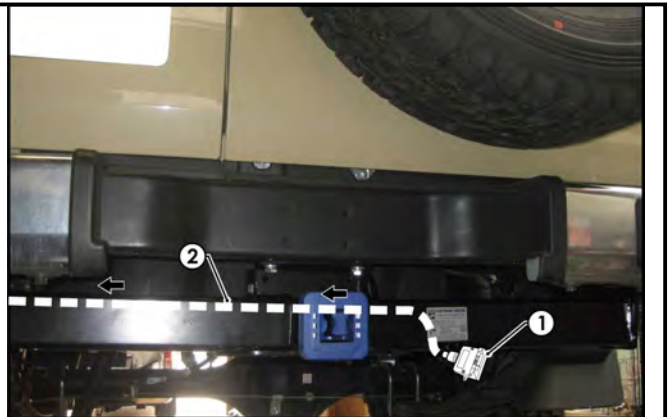
PLEASE ENSURE THAT INSTRUCTIONS ARE UNDERSTOOD PRIOR TO FITMENT

1. On the rear of the LHS chassis rail, locate the 8-way vehicle breakout connector (1).
2. Remove the blanking plug from the vehicle breakout connector (1).
3. Connect the Trailer Harness (P/No: 100038-WL) 8-way connector (2) to the vehicle 8-way breakout connector (1).

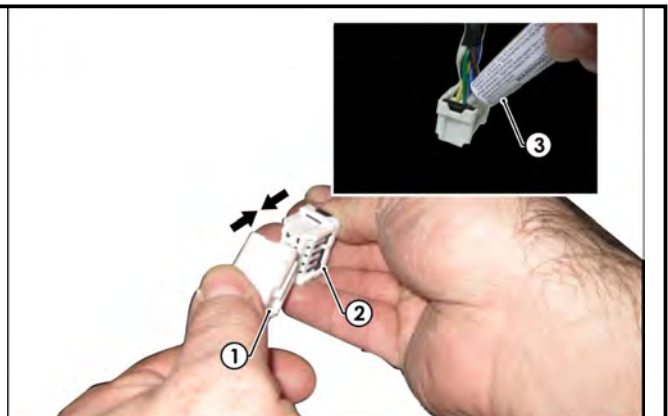
For MY19 and on, breakout connector will be located in the centre, between the chassis rails.



4. Mount the trailer socket (1) to the towbar mounting bracket using M4 fasteners (not supplied).
5. Route the Tail Harness (tail length 1200mm) (2) across the towbar and towards the LHS of the vehicle.



6. Connect the Tail Harness 8-way connector (1) to the Trailer Harness mating 8-way connector (2).
7. Waterproof the connectors by applying electrical grease or silicone (3) to the back of each connector.



Issue Date 06-06-19

Page 2

Part No: 100038-WL

Hayman Reese (Cequent)
PO Box 4050, Dandenong South VIC 3164
Phone 1800 812 017 Email info@haymanreese.com.au

www.haymanreese.com.au



HAYMAN REESE
PART No: 100038-WL
TOYOTA LANDCRUISER SERIES

INSTALLATION INSTRUCTIONS

PLEASE ENSURE THAT INSTRUCTIONS ARE UNDERSTOOD PRIOR TO FITMENT

- | | |
|---|--|
| <ol style="list-style-type: none">8. Test the trailer harness function using a light board or multimeter.9. Secure all harnesses using cables ties (not supplied).10. Re-fit all removed parts and secure all fasteners, ensuring there are no squeaks or rattles.11. Place instructions in glove box after fitment. | |
|---|--|

Issue Date 06-06-19

Page 3

Part No: 100038-WL

Hayman Reese (Cequent)
PO Box 4050, Dandenong South VIC 3164
Phone 1800 812 017 Email info@haymanreese.com.au

www.haymanreese.com.au





FITTING INSTRUCTIONS

Smart Pin (55070BL)

• These fitting instructions are supplied to ensure understanding of how the SMART PIN should be fitted and used correctly.

• Once installed, we recommend **ALL** instructions are kept and placed in the vehicle glove box.

NOTE: Routine maintenance and inspection of the towbar & SMART PIN is required. Regularly inspect for wear and check the tightness of the SMART PIN NUT. Follow instructions below to retighten the nut when necessary.

***Do not tow with your vehicle if the R CLIP or the SMART PIN NUT is loose or missing. Replacement parts are available from your Hayman Reese Distributor.**

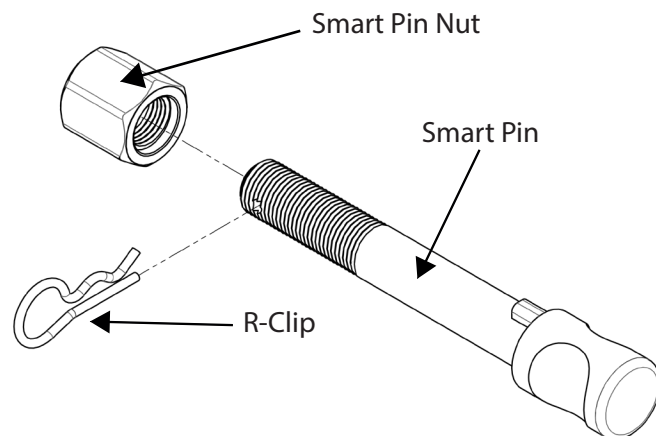
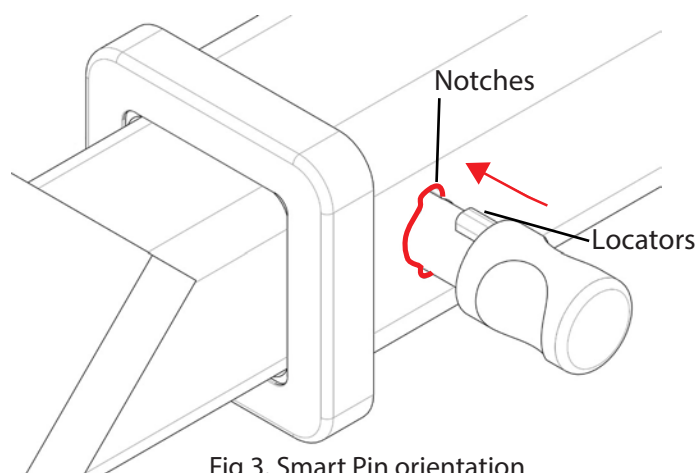
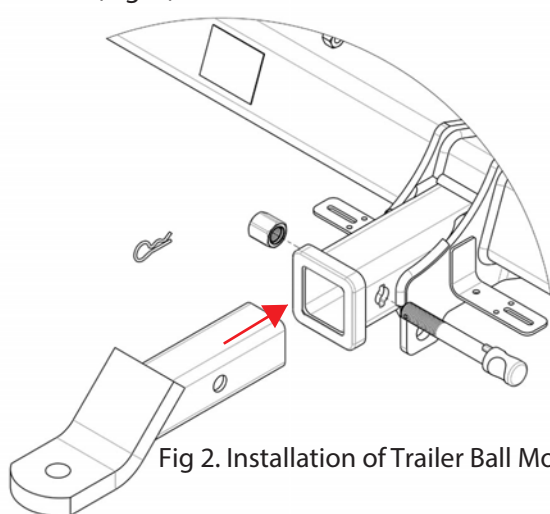


Fig 1. Smart Pin assembly

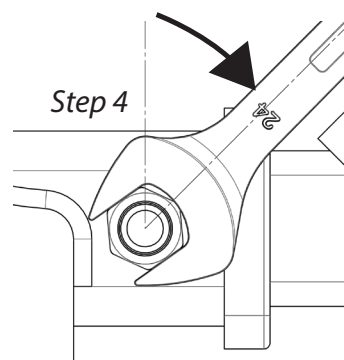
STEP 1 Insert Trailer Ball Mount (TBM) into towbar HITCHBOX, aligning hole in TBM SHANK with hole in HITCHBOX (Fig. 2).



STEP 2 Insert SMART PIN through hole in HITCHBOX and hole in TBM SHANK; ensure the LOCATORS are inserted into the NOTCHES in the HITCHBOX (Fig. 3).

STEP 3 Screw SMART PIN NUT onto SMART PIN; tighten SMART PIN NUT until finger tight, ensuring TBM is restrained from movement.

STEP 4 Tighten SMART PIN NUT by turning nut a further 1/8th of a turn in the clockwise direction using a 24mm spanner (Fig 4).



STEP 5 Install SMART PIN R CLIP through the hole on the SMART PIN (Fig. 1).

