

HAYMAN REESE
PART No: 02915RW
JEEP COMPASS & PATRIOT 03/2007 – 03/2010

INSTALLATION INSTRUCTIONS

PLEASE ENSURE THAT ALL INSTRUCTIONS ARE UNDERSTOOD PRIOR TO FITMENT
PLACE THESE INSTRUCTIONS IN THE VEHICLES GLOVE BOX AFTER INSTALLATIONS COMPLETED



Installation Time: Approx 45 Mins

Towbar Installation Instructions Towbar capacity
JEEP COMPASS & PATRIOT 03/2007 – 03/2010

Part Number	02915RW	Max Towing Braked	1500 kg
		Max Static Ball Load	120 kg

Hayman Reese (Cequent)
PO Box 4050, Dandenong South VIC 3164
Phone 1800 812 017 Email info@haymanreese.com.au

INSTALLATION INSTRUCTIONS

**PLEASE ENSURE THAT ALL INSTRUCTIONS ARE UNDERSTOOD PRIOR TO FITMENT
PLACE THESE INSTRUCTIONS IN THE VEHICLES GLOVE BOX AFTER INSTALLATIONS COMPLETED**

Warning:

1. Do not, drill, cut, weld or otherwise modify the towbar.
2. If you are using electric welding on a motor vehicle, **always** check that the vehicle is not equipped with electronic engine or instrument management equipment. Failure to do so could **destroy** any onboard computers. If in doubt, check with the vehicle's manufacturer.

General:

1. Ensure all hardware items have been included refer to assembly diagram.
2. It is recommended that the instructions are read through and completely understood before making any attempt to fit this product.
3. Be wary of any changes to vehicle designs or other accessories that may conflict with the installation of this product.
4. Before drilling ensure that the area is clear of fuel, electrical & other components.
5. All holes drilled into the body panels shall have all burrs & swarf removed then coated with a suitable rust preventative paint.
6. The high tensile fasteners supplied with this product were used to achieve the specified rating. If replacement is required ensure that fasteners of the same rating & quality are used. Contact an authorised **Hayman Reese** dealer if further information is required.
7. Ensure that all hardware is fastened to torque list below check fasteners on regular basis.
8. Towbar load rating sticker provided with this product shall be conspicuously located on inside rear end of the driver's door. **(See diagram below).**
9. Hayman Reese recommends that you check your tow ball to ensure that it complies with the Australian standards **AS 4177.2**.
10. **PLEASE NOTE:** It is advised to remove your lug or tbm when not actually towing so as to produce a clear view of the vehicles registration plate if obscured, and to also provide maximum available departure angle.
11. Pull Pin must be fit in down position.

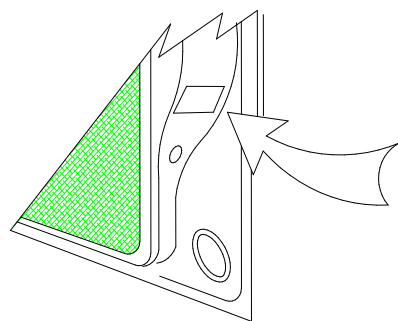
Tow bar Maintenance and Care.

Hayman Reese recommends that bolt torque's, as listed below, are routinely and regularly inspected and checked for correct tension. Replace any worn or defective parts.

We recommended to remove Tow Ball Mounts (TBM's, tongues or lugs) when not being used for any considerable length of time.

So as to avoid injury, when not towing it is suggested that the tongue, Pull Pin and R-clip are removed then stored in a safe, clean and dry place, away from excessive moisture.

Hitch Pull Pins and spring "R" clips are regularly checked for proper installation. Replace any worn or defective parts.



**Place load rating sticker
inside driver's door here**

**RECOMMENDED ASSEMBLY TORQUE
LISTING**

Diameter Grade 8.8 Bolt

M6	9.5 Nm
M8	21.7 Nm
M10	43.4 Nm
M12	77.3 Nm
M14	146 Nm
M16	189.8 Nm

FOR TOWING PURPOSES ONLY

**For towing capacity details please refer to vehicle
owner's manual or to the manufacturer. Overloading can
void your warranties.**

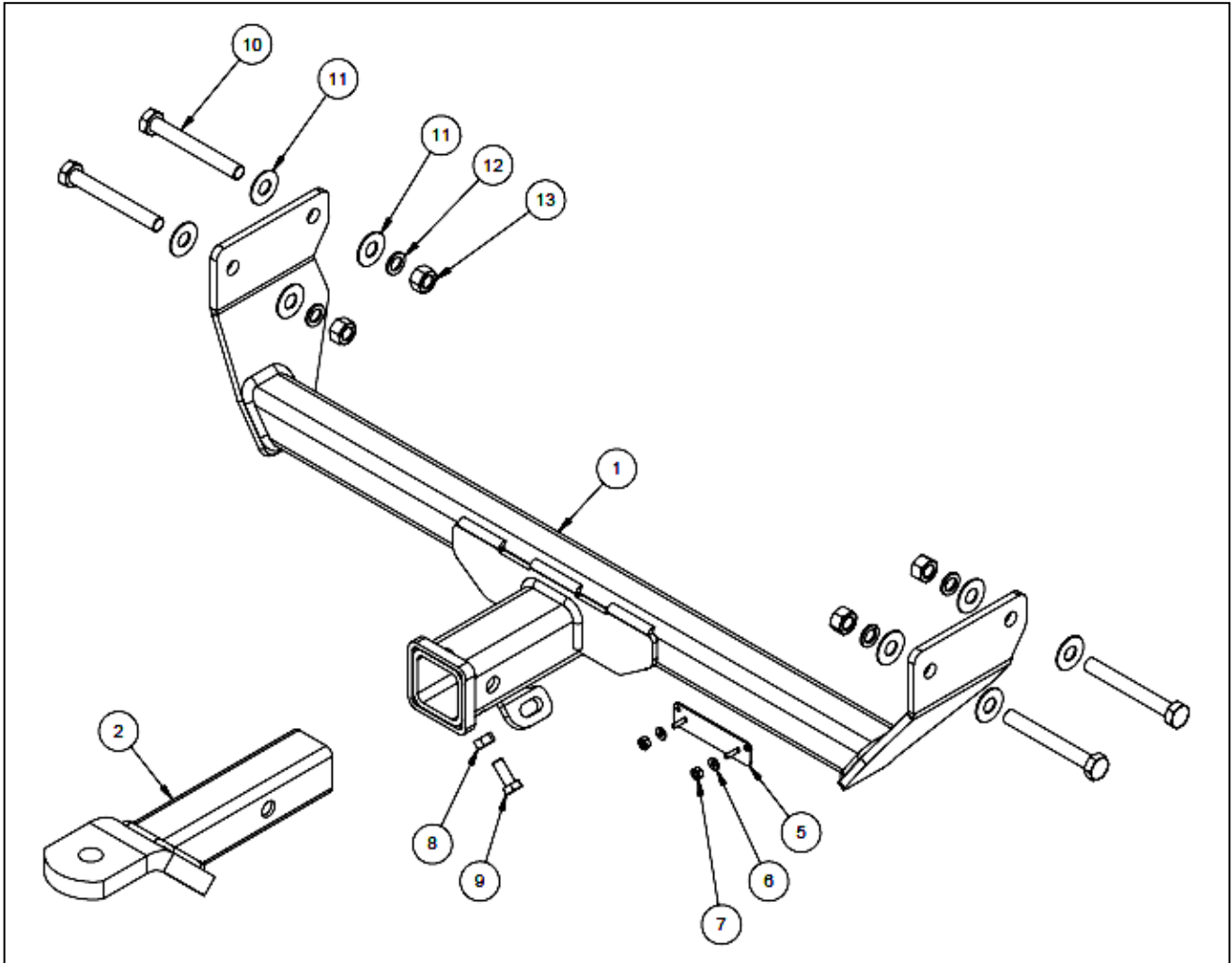
HAYMAN REESE

PART No: 02915RW

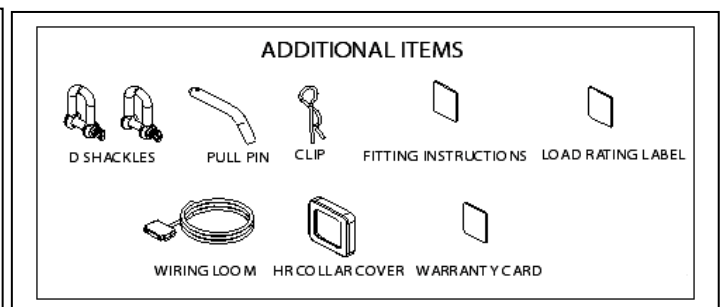
JEEP COMPASS & PATRIOT 03/2007 – 03/2010

INSTALLATION INSTRUCTIONS

PLEASE ENSURE THAT ALL INSTRUCTIONS ARE UNDERSTOOD PRIOR TO FITMENT
PLACE THESE INSTRUCTIONS IN THE VEHICLES GLOVE BOX AFTER INSTALLATIONS COMPLETED



QTY.	DESCRIPTION	ITEM NO.
1	WELDED ASSEMBLY	1
1	TRAILER BALL MOUNT	2
1	BOLT PACK ASSY	3
1	PLASTIC SHEET BAG 250x350	4
1	PLUG BRACKET	5
2	M4 FLAT WASHER (BLACK)	6
2	NYLOC M4	7
1	NUT M10 x 1.5 Z/P HX NUTS	8
1	BOLT M10-1.50 x 25	9
4	M14 X 110 BOLT STD THREAD	10
8	M14X28X1.6 FLAT WASHER	11
4	M14 X 4.0 X 2.5 Z/P FT SEC SPRING WASHER	12
4	M14 x 2.0 HEX NUT PC8	13



HAYMAN REESE

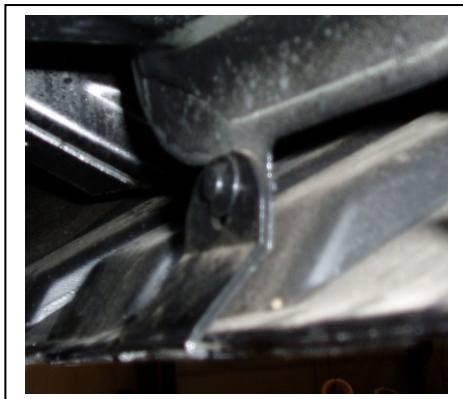
PART No: 02915RW

JEEP COMPASS & PATRIOT 03/2007 – 03/2010

INSTALLATION INSTRUCTIONS

PLEASE ENSURE THAT ALL INSTRUCTIONS ARE UNDERSTOOD PRIOR TO FITMENT
PLACE THESE INSTRUCTIONS IN THE VEHICLES GLOVE BOX AFTER INSTALLATIONS COMPLETED

Tags on the rear bumper that need to be removed
Compass only 03/2007 –



REMOVAL OF BUMPER:

1. Note; The towbar can be fitted without removing the bumper, but for ease of fitment and bumper cut out, it's advisable to remove.

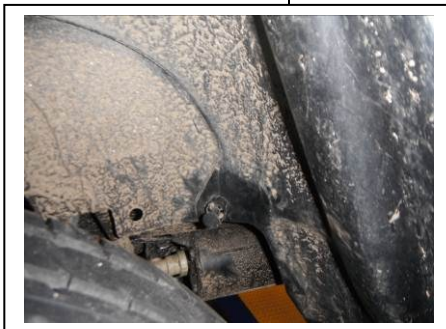
Remove two tags on rear of bumper (if applicable) refer to diagram.

Compass model only, not required for Patriot model.



2. Compass &/or Patriot models (If applicable)

Remove screws and scrivets from inner wheel arches LH & RH sides of vehicle. refer to diagrams.



3. Remove scrivets from along front section of bumper. (If applicable)
Refer to diagram

INSTALLATION INSTRUCTIONS

**PLEASE ENSURE THAT ALL INSTRUCTIONS ARE UNDERSTOOD PRIOR TO FITMENT
PLACE THESE INSTRUCTIONS IN THE VEHICLES GLOVE BOX AFTER INSTALLATIONS COMPLETED**



4. Remove scrivenets from underside of bumper LH & RH sides of vehicle

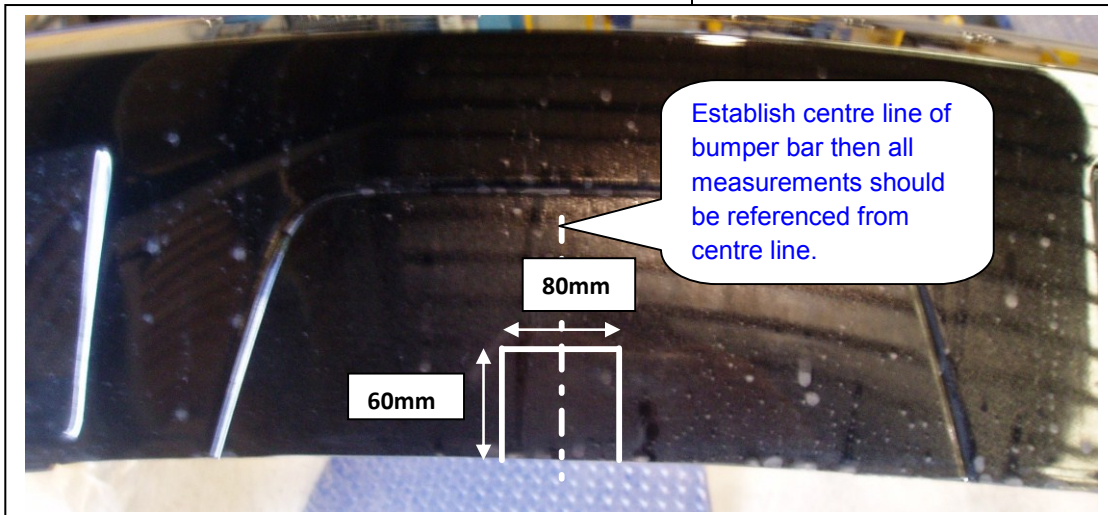
5. Disconnect reverse sensor connection plug. (If fitted)

Disconnect reflector tail light connection plug.

Remove bumper from vehicle, place on suitable stand.

BUMPER CUT OUT :- COMPASS ONLY up to 12 / 2011

6. Cut out 80mm wide x 60mm in height from bottom edge, centre line of bumper.



HAYMAN REESE

PART No: 02915RW

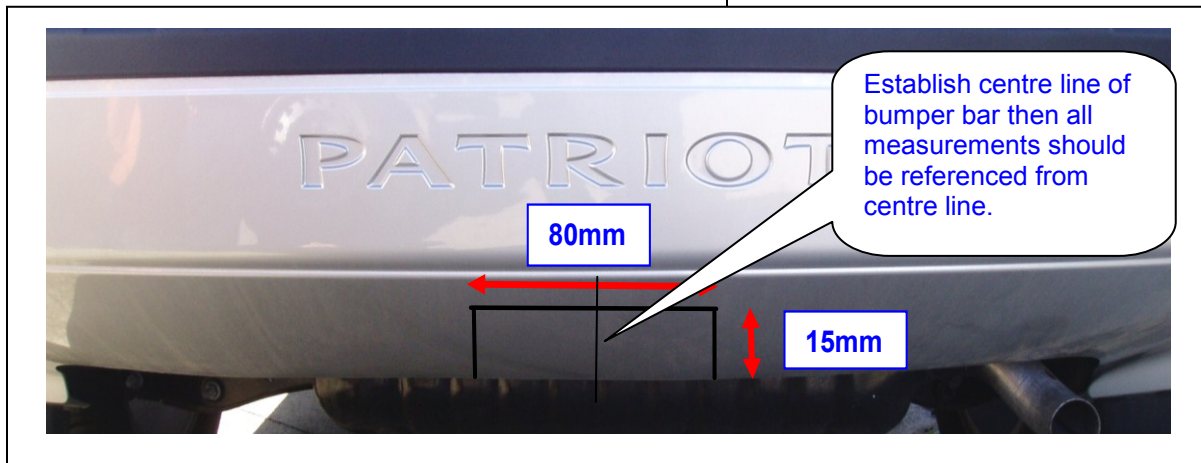
JEEP COMPASS & PATRIOT 03/2007 – 03/2010

INSTALLATION INSTRUCTIONS

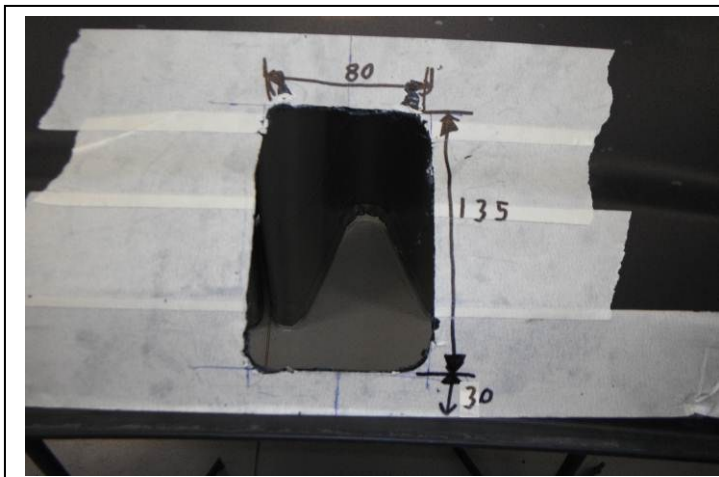
PLEASE ENSURE THAT ALL INSTRUCTIONS ARE UNDERSTOOD PRIOR TO FITMENT
PLACE THESE INSTRUCTIONS IN THE VEHICLES GLOVE BOX AFTER INSTALLATIONS COMPLETED

BUMPER CUT OUT :- PATRIOT ONLY

7. Cut out 80mm wide x 15mm in height from bottom edge, centre line of bumper.



BUMPER CUT OUT :- COMPASS 01 / 2012 On



8. Find centre line of bumper, measure and mark out horizontal line 30mm from folded edge of bumper. (refer to diagram)

Measure equally 40mm both sides of centre line, mark out verticle lines 135mm in height from the 30mm (folded edge) line.

Cut out this rectangular section.
(80 wide x 135 high) with suitable sawing device.

Neatly file down sides and edges square and remove any burrs, before adding rubber trim last.



9. **Plug plate attachment.**

Measure 30mm across from edge of previous cut out, mark a verticle line, then measure across 69mm mark another line.

(Refer to diagram)

Next measure 95mm up from folded edge of bumper, mark horizontal lines.

Drill two 5mm holes through bumper.

INSTALLATION INSTRUCTIONS

**PLEASE ENSURE THAT ALL INSTRUCTIONS ARE UNDERSTOOD PRIOR TO FITMENT
PLACE THESE INSTRUCTIONS IN THE VEHICLES GLOVE BOX AFTER INSTALLATIONS COMPLETED**

L.H.Side of vehicle



Fitment of Towbar:

10. Lift towbar into position, making sure arms are on inner faces of chassis walls.

Line up holes in side arm with holes in chassis. Insert 2 – M14 bolts & flat washers to LH & RH sides of vehicle.

Secure with M14 flat washer, spring washer and nuts.
(Refer to diagrams and page 3)

Tighten to the torque specifications, listed on page 2.

R.H.Side of vehicle



11. Refit bumper in reverse order of fitment

12. Tow rating labels provided, to be affixed onto inside panel of drivers side door, shown on page 2.

13. Attach additional items to towbar, as shown from assembly diagram, on page 3.

HAYMAN REESE
PART No: 100786-WL
JEEP COMPASS MY12
(01/2012 - ONWARDS)

INSTALLATION INSTRUCTIONS

PLEASE ENSURE THAT INSTRUCTIONS ARE UNDERSTOOD PRIOR TO FITMENT

Wiring Loom Installation Instructions

Jeep Compass (MY12 01/2012 - Onwards)

Part No: 100786-WL
ECU: 04826

Tail Harness Length Required: 1200mm
RPA Override Switch Part No: 04848 (If Fitted)

Wiring Loom Installation Time: Approx. 45 minutes

Issue Date 02-05-12

Page 1

Part No: 100786-WL

Hayman Reese (Cequent)
PO Box 4050, Dandenong South VIC 3164
Phone 1800 812 017 Email info@haymanreese.com.au

www.haymanreese.com.au



HAYMAN REESE
PART No: 100786-WL
JEEP COMPASS MY12
(01/2012 - ONWARDS)

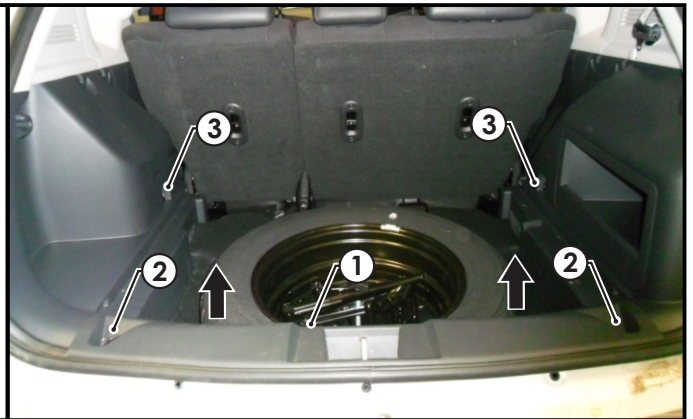
INSTALLATION INSTRUCTIONS

PLEASE ENSURE THAT INSTRUCTIONS ARE UNDERSTOOD PRIOR TO FITMENT

1. In the luggage compartment, remove the floor cover (1).



2. Remove the rear luggage compartment trim (1) by first removing the two cargo hooks (2) and pulling in an upwards direction.
3. Remove both the RHS and LHS luggage compartment cargo hooks (3).



4. On the LHS of the rear passenger's side, remove the door sill trim (1).



Issue Date 02-05-12

Page 2

Part No: 100786-WL

Hayman Reese (Cequent)
PO Box 4050, Dandenong South VIC 3164
Phone 1800 812 017 Email info@haymanreese.com.au

www.haymanreese.com.au



HAYMAN REESE
PART No: 100786-WL
JEEP COMPASS MY12
(01/2012 - ONWARDS)

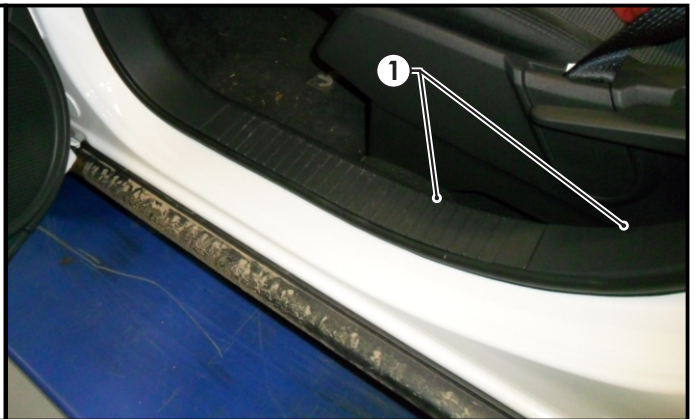
INSTALLATION INSTRUCTIONS

PLEASE ENSURE THAT INSTRUCTIONS ARE UNDERSTOOD PRIOR TO FITMENT

5. On the RHS of the rear passenger's side, dislodge the door sill trim (1).

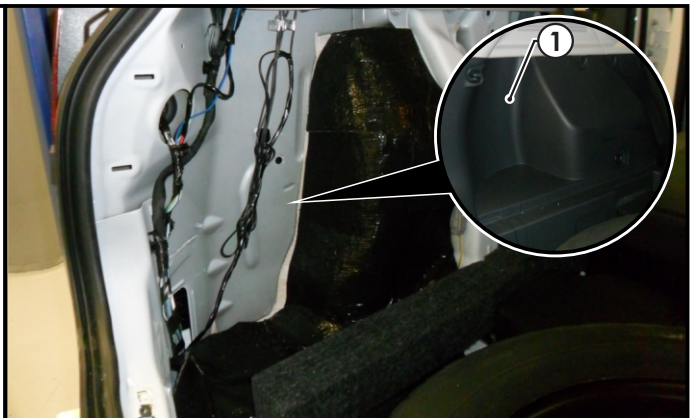


6. On the LHS of the front passenger's side, remove the 'B' pillar / door sill trim (1).



7. In the luggage compartment, remove the LHS luggage compartment trim (1).

Repeat for the RHS.



Issue Date 02-05-12

Page 3

Part No: 100786-WL

Hayman Reese (Cequent)
PO Box 4050, Dandenong South VIC 3164
Phone 1800 812 017 Email info@haymanreese.com.au

www.haymanreese.com.au

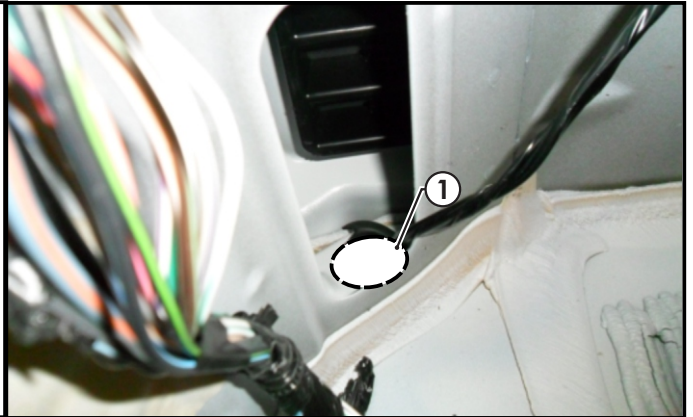


HAYMAN REESE
PART No: 100786-WL
JEEP COMPASS MY12
(01/2012 - ONWARDS)

INSTALLATION INSTRUCTIONS

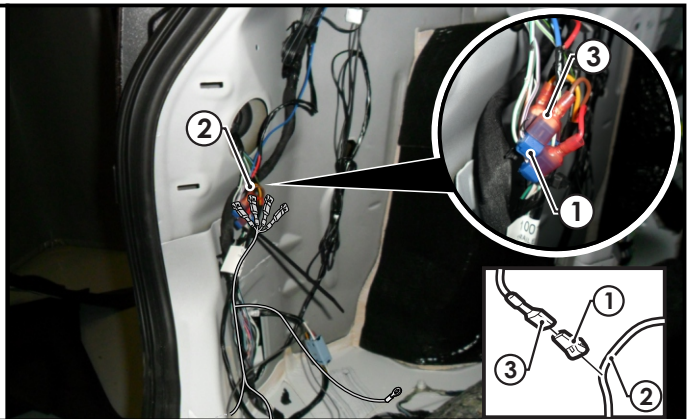
PLEASE ENSURE THAT INSTRUCTIONS ARE UNDERSTOOD PRIOR TO FITMENT

8. Inside the luggage compartment, on the LHS rear quarter panel, drill out the existing grommet hole (1) to Ø30mm using a step drill.
9. File down any rough edges and spray with rust inhibitor.

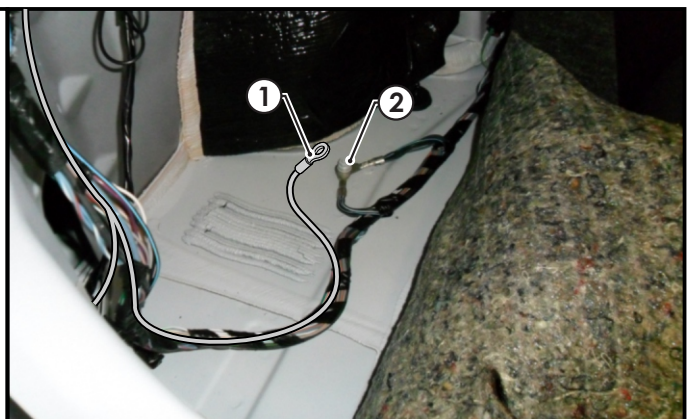


10. In the LHS of the luggage compartment, following the table below, connect the ezy-tap (1) to the corresponding vehicle wires (2), then connect the trailer patch terminal (3) to the ezy-tap (1).

Function	Trailer Patch	Vehicle Connector
L.IND	YELLOW / BLACK	GREEN / RED
REVERSE	BLACK / WHITE	WHITE / LIGHT GREEN
TAIL	BROWN / BLACK	WHITE / PURPLE
BRAKES	RED / BLACK	WHITE / ORANGE



11. Connect the trailer harness ground ring terminal (1) to the vehicle grounding point (2).



Issue Date 02-05-12

Page 4

Part No: 100786-WL

Hayman Reese (Cequent)
 PO Box 4050, Dandenong South VIC 3164
 Phone 1800 812 017 Email info@haymanreese.com.au

www.haymanreese.com.au

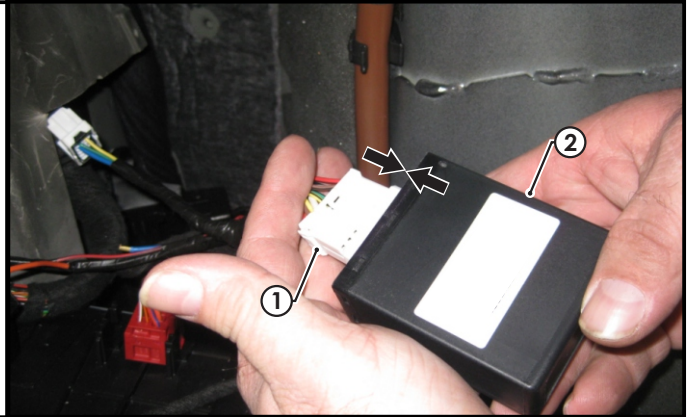


HAYMAN REESE
PART No: 100786-WL
JEEP COMPASS MY12
(01/2012 - ONWARDS)

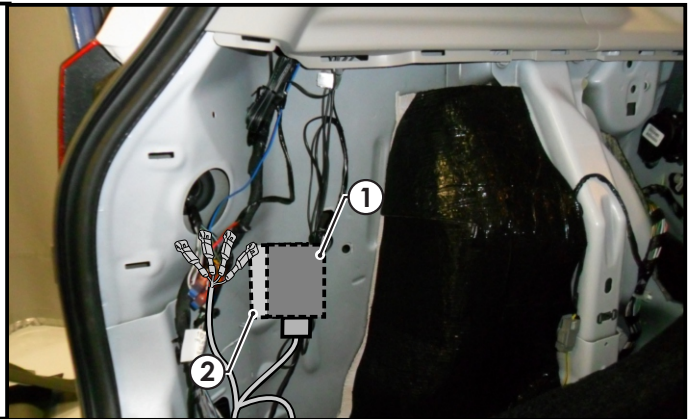
INSTALLATION INSTRUCTIONS

PLEASE ENSURE THAT INSTRUCTIONS ARE UNDERSTOOD PRIOR TO FITMENT

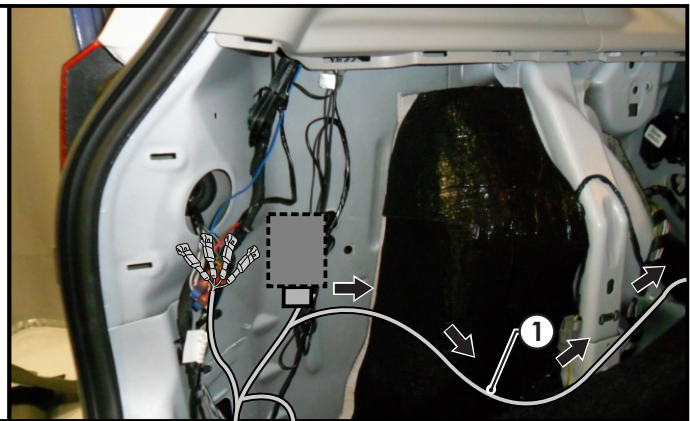
12. Connect the trailer harness 12-way connector (1) to the ECU (04826) (2).



13. Using double sided tape, adhere the ECU (1) to the indicated location (2) on the vehicle sheet metal.



14. Route the 'ORANGE' power wire (1) along the LHS through the luggage compartment following the existing vehicle harness towards the front of the vehicle.



Issue Date 02-05-12

Page 5

Part No: 100786-WL

Hayman Reese (Cequent)
PO Box 4050, Dandenong South VIC 3164
Phone 1800 812 017 Email info@haymanreese.com.au

www.haymanreese.com.au

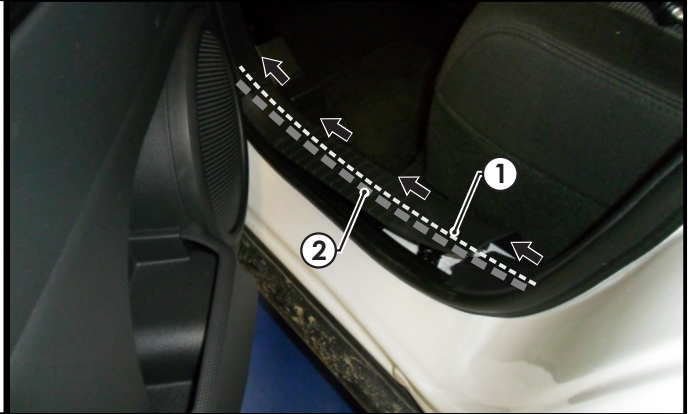


HAYMAN REESE
PART No: 100786-WL
JEEP COMPASS MY12
(01/2012 - ONWARDS)

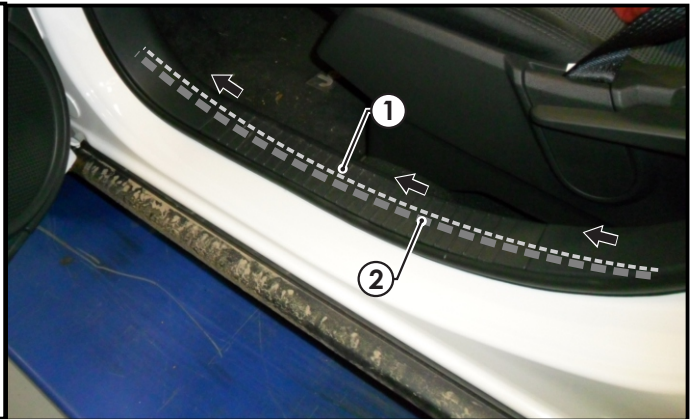
INSTALLATION INSTRUCTIONS

PLEASE ENSURE THAT INSTRUCTIONS ARE UNDERSTOOD PRIOR TO FITMENT

15. Continue to route the 'ORANGE' power wire (1) along the LHS of the rear passenger side, following the existing vehicle harness (2).
16. Secure the 'ORANGE' power wire (1) to the existing vehicle harness (2) using cable ties (not supplied).

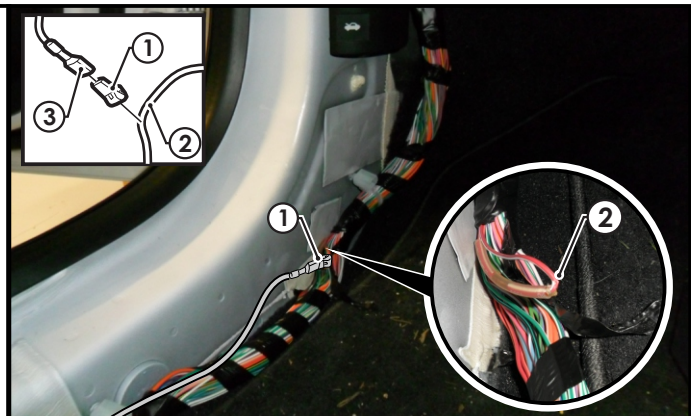


17. Continue routing the 'ORANGE' power wire (1) along the LHS of the front passenger side, following the existing vehicle harness (2).
18. Secure the 'ORANGE' power wire (1) to the existing vehicle harness (2) using cable ties (not supplied).



19. On the LHS of the lower dash, remove the kick panel trim.
20. Following the table below, connect the ezy-tap (1) to the RED / WHITE wire (2), then connect the power wire terminal (3) to the ezy-tap (1).

Function	Trailer Patch	Vehicle Connector
POWER	ORANGE	RED / WHITE



Issue Date 02-05-12

Page 6

Part No: 100786-WL

Hayman Reese (Cequent)
 PO Box 4050, Dandenong South VIC 3164
 Phone 1800 812 017 Email info@haymanreese.com.au

www.haymanreese.com.au

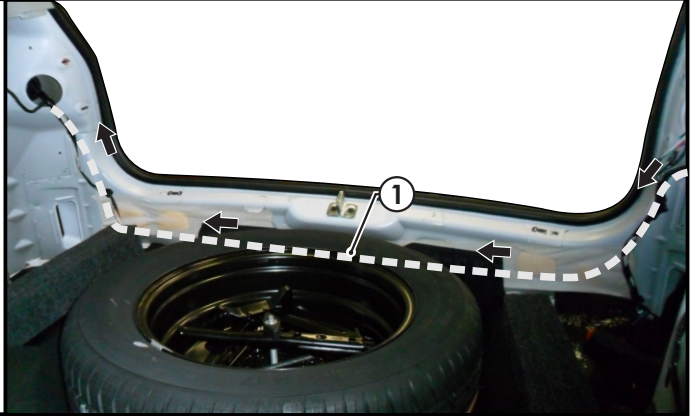


HAYMAN REESE
PART No: 100786-WL
JEEP COMPASS MY12
(01/2012 - ONWARDS)

INSTALLATION INSTRUCTIONS

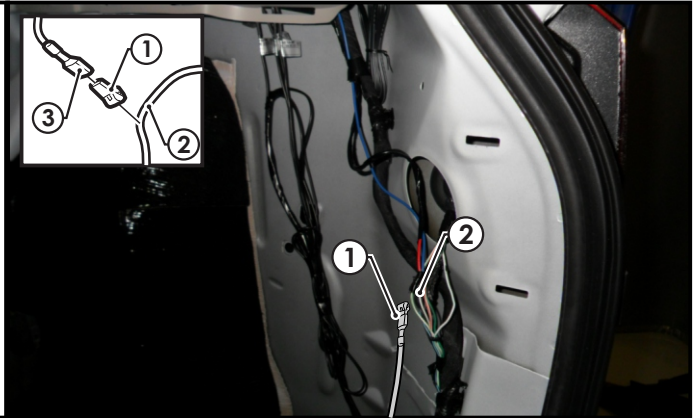
PLEASE ENSURE THAT INSTRUCTIONS ARE UNDERSTOOD PRIOR TO FITMENT

21. In the luggage compartment, route the trailer harness (1) (P/No: 100786-WL) from the LHS towards the RHS tail light.

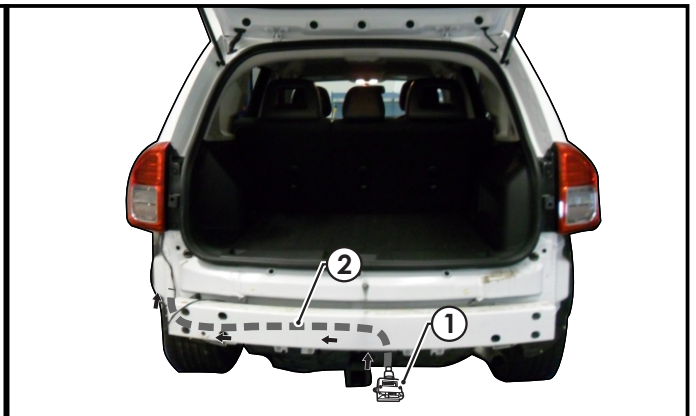


22. On the RHS luggage compartment, following the table below, connect the ezy-tap (1) to the corresponding WHITE / YELLOW wire (2), then connect the trailer patch terminal (3) to the ezy-tap (1).

Function	Trailer Patch	Vehicle Connector
R.IND	GREEN / BLACK	RED / WHITE



23. Mount the trailer socket (1) to the towbar mounting bracket using M4 fasteners (not supplied).
24. Route the tail harness (tail length 1200mm) (2) towards and up through the previously drilled out hole.
25. Ensure the tail harness grommet is seated correctly and makes a good seal.
26. Secure the grommet in place using cable ties (not supplied).



Issue Date 02-05-12

Page 7

Part No: 100786-WL

Hayman Reese (Cequent)
 PO Box 4050, Dandenong South VIC 3164
 Phone 1800 812 017 Email info@haymanreese.com.au

www.haymanreese.com.au

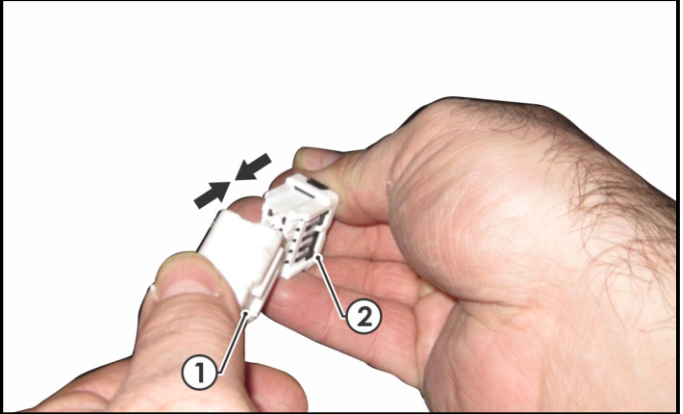


HAYMAN REESE
PART No: 100786-WL
JEEP COMPASS MY12
(01/2012 - ONWARDS)

INSTALLATION INSTRUCTIONS

PLEASE ENSURE THAT INSTRUCTIONS ARE UNDERSTOOD PRIOR TO FITMENT

27. Connect the tail harness 8-way connector (1) to the Trailer Patch 8-way mating connector (2).



28. Test the Trailer Harness function using a light board or multimeter.
29. Secure all harnesses using cable ties (not supplied).
30. Re-fit removed parts and secure all fasteners, ensuring there are no squeaks or rattles.
31. Place the instructions in the glove box after fitment.

Issue Date 02-05-12

Page 8

Part No: 100786-WL

Hayman Reese (Cequent)
PO Box 4050, Dandenong South VIC 3164
Phone 1800 812 017 Email info@haymanreese.com.au

www.haymanreese.com.au

