

**HAYMAN REESE**  
**PART No: 02022RW**  
**FORD TERRITORY TX 04 / 2004 - On**

**INSTALLATION INSTRUCTIONS**

PLEASE ENSURE THAT INSTRUCTIONS ARE UNDERSTOOD PRIOR TO FITMENT



**Installation Time: Approx 45 Mins**

**Towbar Installation Instructions**  
**Ford Territory TX 04 / 2004 - On**

**Towbar capacity**

**Part Number 02022RW**

**Max Towing Braked 2700kg**  
**Max Static Ball Load 270kg**

Hayman Reese (Cequent)  
PO Box 4050, Dandenong South VIC 3164  
Phone 1800 812 017 Email [info@haymanreese.com.au](mailto:info@haymanreese.com.au)

## **INSTALLATION INSTRUCTIONS**

PLEASE ENSURE THAT INSTRUCTIONS ARE UNDERSTOOD PRIOR TO FITMENT

### **Warning:**

## **FORD MOTOR COMPANY RECOMMENDS THE USE OF A LOAD LEVELING KIT TO ACHIEVE THE MAXIMUM TOWING CAPACITY**

Do not, drill, cut, weld or otherwise modify the towbar.

If you are using electric welding on a motor vehicle, **always** check that the vehicle is not equipped with electronic engine or instrument management equipment. Failure to do so could **destroy** any onboard computers. If in doubt, check with the vehicle's manufacturer.

1. **General:** Ensure all hardware items have been included refer to assembly diagram.
2. It is recommended that the instructions are read through and completely understood before making any attempt to fit this product.
3. Be wary of any changes to vehicle designs or other accessories that may conflict with the installation of this product.
4. Before drilling ensure that the area is clear of fuel, electrical & other components.
5. All holes drilled into the body panels shall have all burrs & swarf removed then coated with a suitable rust preventative paint.
6. The high tensile fasteners supplied with this product were used to achieve the specified rating. If replacement is required ensure that fasteners of the same rating & quality are used. Contact an authorised **Hayman Reese** dealer if further information is required.
7. Ensure that all hardware is fastened to torque list below check fasteners on regular basis.
8. Towbar load rating sticker provided with this product shall be conspicuously located on inside rear end of the driver's door. **(See diagram below).**
9. Hayman Reese recommends that you check your tow ball to ensure that it complies with the Australian standards **AS 4177.2**.
10. **PLEASE NOTE:** It is advised to remove your lug or tbm when not actually towing so as to produce a clear view of the vehicles registration plate if obscured, and to also provide maximum available departure angle.

### **Tow bar Maintenance and Care.**

Hayman Reese recommends that bolt torque's, as listed below, are routinely and regularly inspected and checked for correct tension. Replace any worn or defective parts.

We recommended to remove Tow Ball Mounts (TBM's, tongues or lugs) when not being used for any considerable length of time.

So as to avoid injury, when not towing it is suggested that the tongue, Pull Pin and R-clip are removed then stored in a safe, clean and dry place, away from excessive moisture.

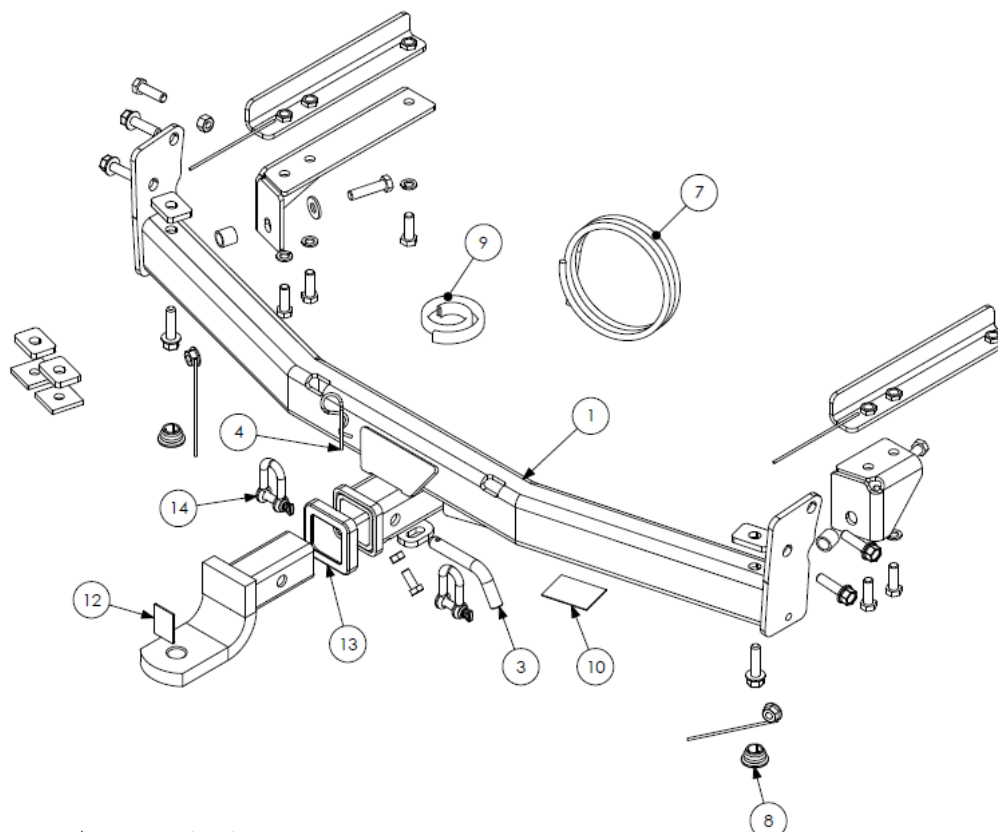
Hitch Pull Pins and spring "R" clips are regularly checked for proper installation. Replace any worn or defective parts.



**HAYMAN REESE**  
**PART No: 02022RW**  
**FORD TERRITORY TX 04 / 2004 - On**

**INSTALLATION INSTRUCTIONS**

PLEASE ENSURE THAT INSTRUCTIONS ARE UNDERSTOOD PRIOR TO FITMENT



QTY.	DESCRIPTION	ITEM NO.
1	FORD TERRITORY	1
1	BRAND BAG	2
1	PULL PIN	3
1	SPRING COTTER PIN ASSY	4
1	Warranty Card	5
1	Fitting Instructions	6
1	WIRING LOOM	7
2	PLASTIC INSERT 33.7x2.6x4	8
1	BUMPER TRIM PINCH WELD 460mm	9
1	ACRYLIC CPL	10
1	ACRYLIC LRL	11
1	HAYMAN REESE LOGO STICKER	12
1	Hitch Box Collar Cover	13
2	'D' SHACKLE	14
1	PLASTIC SHEET BAG 200x500	15

## INSTALLATION INSTRUCTIONS

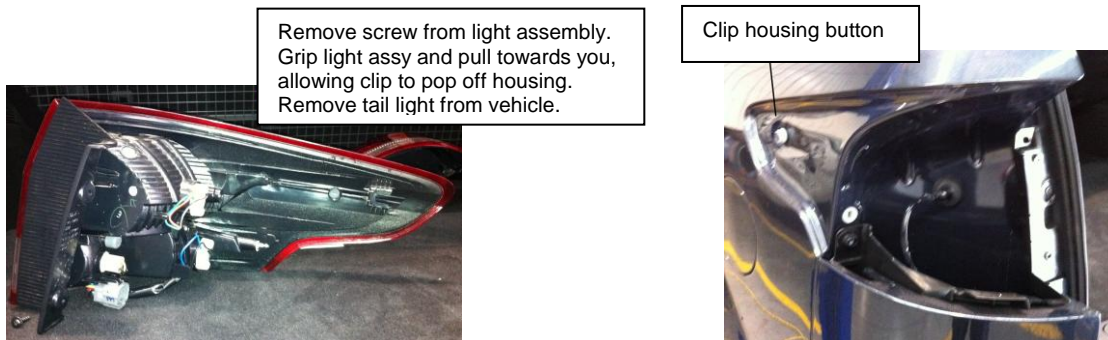
PLEASE ENSURE THAT INSTRUCTIONS ARE UNDERSTOOD PRIOR TO FITMENT

### **WARNING:**

**Do not, drill, cut, weld or otherwise modify the towbar.**

If you are using electric welding on a motor vehicle, **always** check that the vehicle is not equipped with electronic engine or instrument management equipment. Failure to do so could **destroy** any onboard computers. If in doubt, check with the vehicle's manufacturer.

- 1 Ensure all hardware items have been included.
- 2 Remove tail lights, via removal of the following items:
  - a) 6-torx head screws 3 each tail light or Phillips head screws
  - b) Unplug tail light connection for each light
  - c) 2-10mm nuts behind lights
  - d) Removal of tail lights for **FORD TERRITORY SZ 2011 On** models, refer to diagrams below.



- 3 Remove bumper bar, via removal of the following items:
  - a) 2-plastic trim plugs and 2 screws on underside of each wheel arch
  - b) If mudguards are fitted, screws replace trim buttons
  - c) 7-plastic trim buttons on underside of bumper bar
  - d) If reverse sensors are fitted, disconnect
  - e) Flex out bumper bar from sides and pull rear ward
  - f) Remove 2 plastic tabs inside the bumper bar using sharp knife.
- 4 Cut rear panel as per diagram with tin snips, then fold section of panel up and flat. (see Figures 1 & 2)
- 5 Lift bar into position, so holes in side plates of towbar align with holes in sub frame. Support the bar with jack stands or jack and drive through taptite bolts in six places using suitable rattle gun.
- 6 From under the crosstube, fit two vertical taptites with loose plate(s) to suit gap in between impact beam and crosstube.
- 7 Make sure that all six mounting points in sub frame have been accounted for.

**HAYMAN REESE**  
**PART No: 02022RW**  
**FORD TERRITORY TX 04 / 2004 - On**

**INSTALLATION INSTRUCTIONS**

PLEASE ENSURE THAT INSTRUCTIONS ARE UNDERSTOOD PRIOR TO FITMENT

- 8 Tighten all bolts on impact beam to specified torque.
  
- 9 Fit loose mounting arms to towbar. The longer of the two to the passenger side and the shorter to driver's side, making sure that the spacer tubes are fitted between the bar and the loose arms.
- 10 Tighten bolts semi tight, making sure that the arms are square and straight to sub frame.
- 11 Using holes in loose arms as a guide drill 13mm on underside of chassis rails in three places on passenger side, and two places on driver's side.
- 12 Feed support chassis brackets through holes in chassis rails, then align with the holes drilled in step 10.
- 13 Fit bolts and washers as per diagram.
- 14 Tighten all bolts to torque listing below then cut excess wire from nuts and bolts.
- 15 Fit plastic inserts into access holes as per fitting diagram.
- 16 Cut bumper as per figure 3 and fit pinch weld.
- 17 Remove and discard screws in 2 places, and trim off plastic tabs. (see Figure3).
- 18 Refit bumper by following step 3, then step 2.

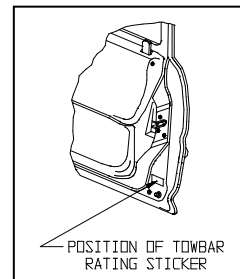
**NOTE: Hayman Reese recommends that you check your towball to ensure it complies with Australian Design Rules.**

**FOR TOWING PURPOSES ONLY**

For towing capacity details please refer to vehicle owner's manual or to the manufacturer. Overloading can void your warranties.

**RECOMMENDED ASSEMBLY TORQUE LISTING**

<u>Diameter</u>	<u>Grade 8.8 Bolt</u>
	<u>Nm</u>
M8	21.7
M10	43.4
M12	77.3
M16	189.8



## INSTALLATION INSTRUCTIONS

PLEASE ENSURE THAT INSTRUCTIONS ARE UNDERSTOOD PRIOR TO FITMENT

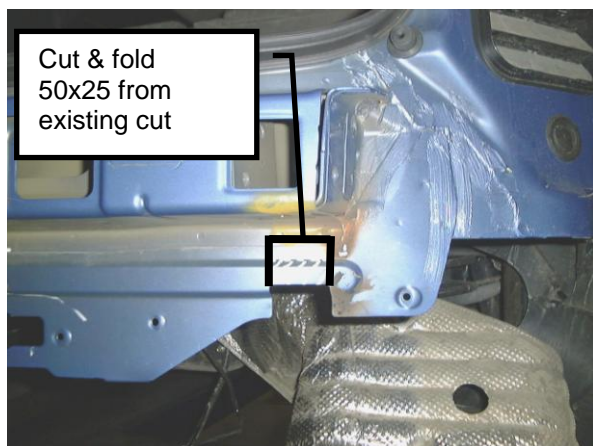


FIG 1 DRIVERS SIDE

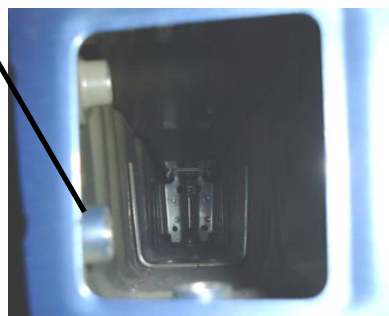


FIG 2 PASSENGER SIDE

Captive bushes,  
Three each side.

### FITTING TAPTITE BOLTS

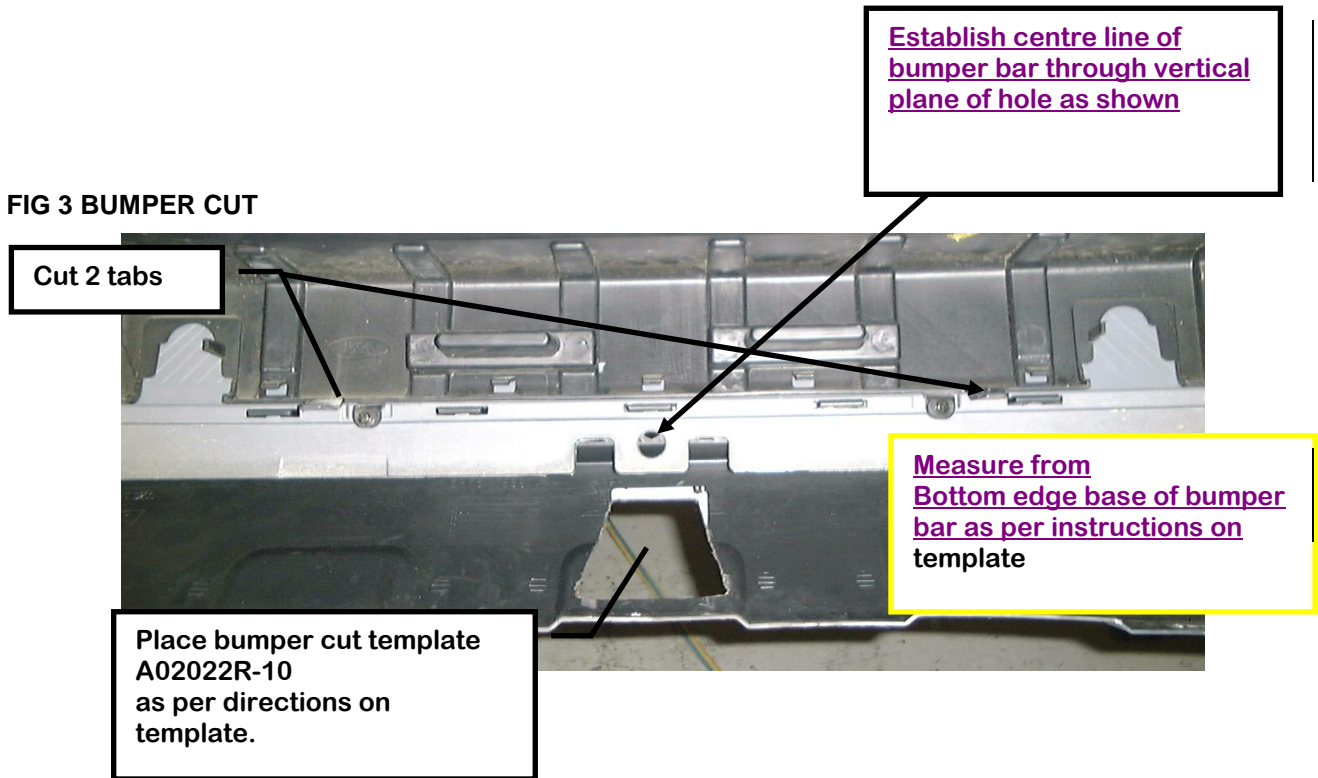
- Lift bar into position so holes in sub frame line up with holes in side arms.
- Support tow bar with suitable jack or jack stands, as per step 5.
- Drive tap tite bolts supplied into captive bushes in three places, two located at each end of sub frame and one underneath each side, with suitable rattle gun.
- Loosen tap tite bolts so that the bar can be manipulated into the correct position.



**INSTALLATION INSTRUCTIONS**

PLEASE ENSURE THAT INSTRUCTIONS ARE UNDERSTOOD PRIOR TO FITMENT

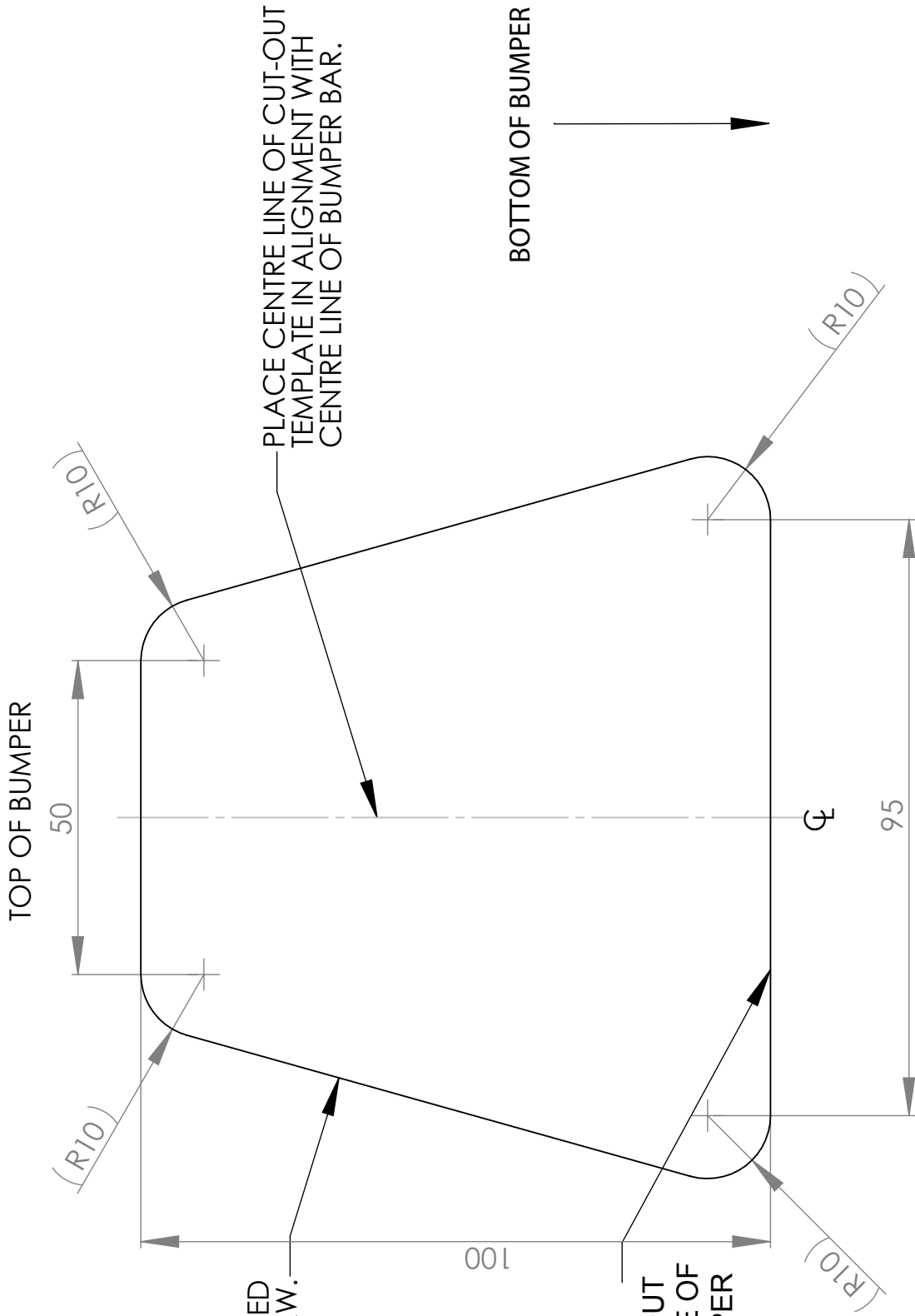
**FIG 3 BUMPER CUT**



**PLEASE NOTE:** You must remove the lug unless you are actually towing if it obscures your number plate. Failure to do so may result in a fine.

ESTABLISH CENTRE LINE OF BUMPER AS PER FIG 3 FROM INSTALLATION INSTRUCTIONS R2022

**NOTE:**  
PLEASE ENSURE TEMPLATE IS TO SCALE BEFORE CUTTING BUMPER.



CUT ALONG OUTSIDE PROFILE WITH AIR OPERATED HACKSAW OR SIMILAR SAW.

PLACE CENTRE LINE OF CUT-OUT TEMPLATE IN ALIGNMENT WITH CENTRE LINE OF BUMPER BAR.

BOTTOM OF BUMPER

**TX 04 / 2004 - SY 2010**  
POSITION BOTTOM OF CUT-OUT TEMPLATE 40mm FROM BASE OF BUMPER ON INSIDE OF BUMPER BAR.

**SZ MODELS 2011 - On**  
POSITION BOTTOM OF CUT-OUT TEMPLATE 45mm FROM BASE OF BUMPER ON INSIDE OF BUMPER BAR.

DRILL THROUGH 20mm IN EACH CORNER TO ACHIEVE 10mm RADIUS. OUTSIDE OF DRILL BIT SHOULD BE CONCENTRIC WITH CORNER PROFILE.

PART No A02022R-10





**HAYMAN REESE**  
*LEADING THE WAY*

**PART No: 100001-WL**  
**FORD BA/BF TERRITORY**

PLEASE ENSURE THAT INSTRUCTIONS ARE UNDERSTOOD PRIOR TO FITMENT

## **Wiring Loom Installation Instructions**

**FORD BA/BF, SX/SY/SYII & SZ TERRITORY**  
**Part No: 100001-WL**

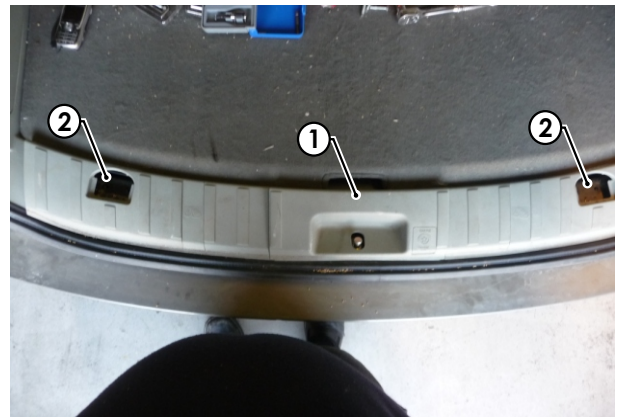
**Tail Harness Required Part No: 04816**

**Wiring Loom Installation Time: Approx 30 mins**

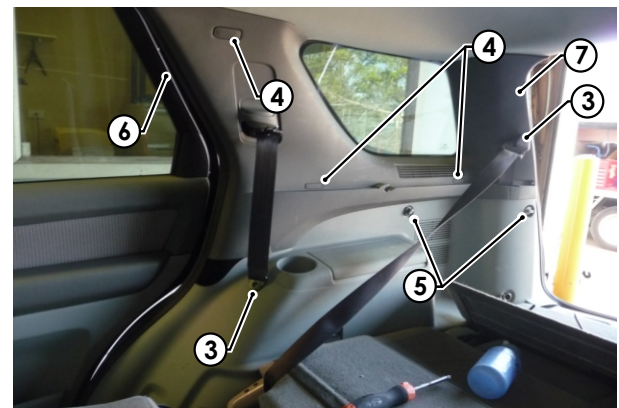


PLEASE ENSURE THAT INSTRUCTIONS ARE UNDERSTOOD PRIOR TO FITMENT

1. Remove the rear boot trim by unscrewing the cargo strap mounts (1) and remove panel (2).



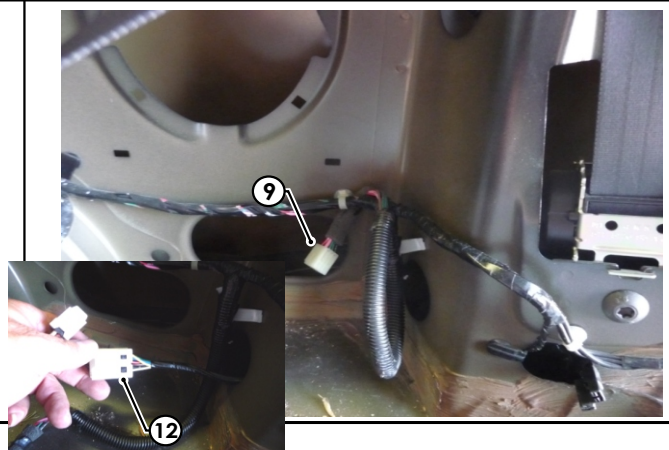
3. Remove seatbelt bolts
4. Remove plastic covers x3 to reveal screws & unscrew.
5. Unscrew tie down mounts x2.
6. Remove RHS rear door seal.
7. Remove RHS rear upper trim.



8. Dislodge the lower trim disconnect the 12V aux connector then remove the panel completely.



9. Locate the vehicle trailer breakout connector.
10. Connect the Trailer Patch harness (P/No: 100001-WL) to the break-out connector.
11. On the RHS rear, below the tail light, remove the grommet and feed the tail harness Part No. 04816 through the hole until it comes through the inner cavity.
12. Connect the trailer patch harness to the tail harness.
13. Secure the trailer socket onto towbar mounting plate using M4 fasteners.





**HAYMAN REESE**  
*LEADING THE WAY*

**PART No: 100001-WL**  
**FORD BA/BF TERRITORY**

**PLEASE ENSURE THAT INSTRUCTIONS ARE UNDERSTOOD PRIOR TO FITMENT**

- |   |  |
|---|--|
| <ul style="list-style-type: none"><li>14. Test the trail harness using a light board or multimeter.</li><li>15. Secure all harnesses using cables ties.</li><li>16. Refit all removed parts and secure all fasteners ensuring there are no squeaks or rattles.</li><li>17. Place instructions in glove box after fitment.</li></ul> |  |
|   |  |